

# BOX BAFFLES SLIM

Acoustics » Acoustic Baffles



Brand: **Zintra**

Collections: **Box Baffles**

Applications: **Walls**

1300 306 399

[info@baresque.com.au](mailto:info@baresque.com.au)

[baresque.com.au](http://baresque.com.au)

1 of 9

# BOX BAFFLES SLIM

Acoustics » Acoustic Baffles



Box Baffle Slim - Direct Mount - 1



Box Baffle Slim - Direct Mount - 2



# BOX BAFFLES SLIM

Acoustics » Acoustic Baffles



Box Baffle Slim - Profile



Box Baffle Slim - Clip Brace Detail



# BOX BAFFLES SLIM

Acoustics » Acoustic Baffles

Box Baffles Slim Set at 3.5" (90mm), 10 or 5 baffles per set. Offering a sleek, lightweight ceiling line. Creative flexibility in design and installation.

## Description

Zintra Box Baffle Sets are prefabricated, ceiling-mounted systems that bring rhythm, dimension, and high-performance acoustics to any space. The box-shaped design not only looks substantial but also improves sound absorption, capturing noise within and increasing the NRC rating. Lightweight, modular, and scalable, they are a visually striking alternative to traditional mineral fibre ceilings.

With Box Baffle Sets, you get Zintra's acoustic performance and design impact, minus the hardware. This opens up the freedom to experiment, reimagine, and tailor ceiling layouts that reflect your unique style.

Box Baffles Slim Set features the shallowest depth at 3.5" (90mm), yet delivers maximum visual rhythm with a light, elegant ceiling line that enhances acoustic performance without overwhelming the space. Ideal for projects requiring subtle impact with high coverage, Slim offers a clean, modern solution that balances scale, sound control, and design efficiency.

Available in two sizes, 39" (1000mm) w x 94.5" (2400mm) d and 93" (2362mm) w x 94.5" (2400mm) d. Each set comes with either 10 or 5 baffles (depending on size)

With a wide array of designs, Zintra Box Baffles are ideal for large, noisy spaces such as educational institutions, shopping centres, restaurants, and airports, where performance meets aesthetic appeal.

## How to Specify

1. Space Size
2. Layout Of Baffles Within Space
3. Baffle Depth
4. Installation | System or Set | 5. Hardware
6. Select Connection Method
7. Select Colour

## Composition

Zintra Acoustic Panel - 95% Polyester + 5% PLA

12mm (1/2") -Density 2.4 kg /m<sup>2</sup> 0.5 lb/ft

## Dimensions

1000 mm (39")

OR

2400mm (94.5")

Baffle Profile 56mm (2.2") w x 90mm (3.5") h

# BOX BAFFLES SLIM

Acoustics » Acoustic Baffles

---

**Fire Rating** Tested in accordance with AS ISO 9705 2003 for the purpose of determining the Group Number classification required by the Building Code of Australia for the control of fire spread on interior wall and ceiling linings.

Classification - Group 1

Specific Extinction - Less than 250m<sup>2</sup>/kg

---

**Supplied As** 1 x Baffle Set  
39" (1000mm) x 94.5" (2400mm) - 10 Baffles

OR

93" (2362mm) x 94.5" (2400mm) - 5 Baffles

40 | 50 x 1" (25mm) Clear Beams Clips

Hardware sold separately

---

**Suggested Installation** Be sure to support the panel during installation to avoid bowing or creasing.

Fix wire to floor and ceiling leaving a gap between to fit screen.

Adjust pivoting support to desire height, fit screen.

Download the Handling and Installation guide for full instructions.

---

**Care Instructions** Vacuum to remove dust.

Dab Zintra with a damp clean cloth and mild solution of liquid detergent and warm water. Repeat using only clean water, then pat dry with a lint free cloth.

For difficult stains, use a solution of household bleach (10% bleach / 90% water). To remove the bleach, repeat using a clean, water dampened cloth, then pat dry.

Always test in an inconspicuous area first and if you don't see the expected results, contact us.

---

**Warranty** 5-year warranty.

---

**Customisable** The Zintra Acoustic Solutions range is customisable to your project. Please get in touch with your local contact for details.

---

**Additional Comments** Without Air Gap: Up to 0.90 | With 610mm (24") Air Gap: Up to 0.95

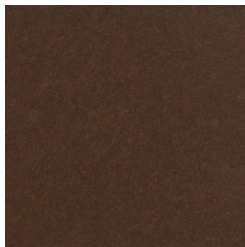
---

# BOX BAFFLES SLIM

Acoustics » Acoustic Baffles

## Colour & Finish Options

Zintra 12mm Solid PET



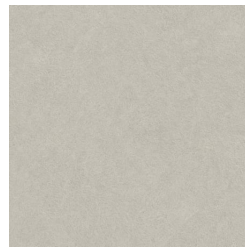
Bark



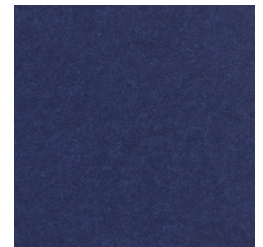
Brick



Cadet



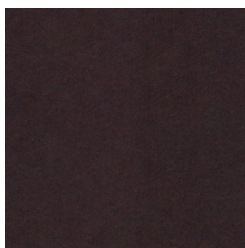
Chambray



Cobalt



Ecru



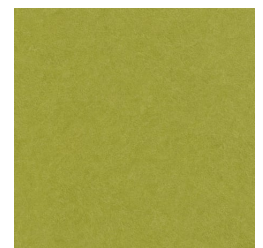
Elderberry



Fossil



Frost



Grass



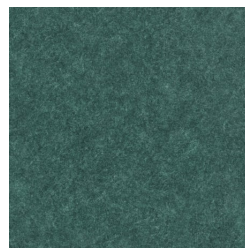
Greige



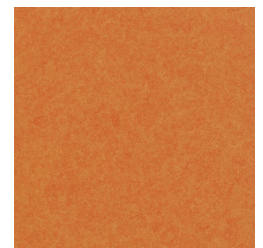
Ivory



Linen



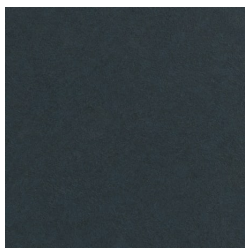
Malachite



Mandarin



Meadow



Midnight



Ochre



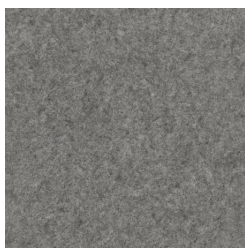
Olive



Parchment



Pebble



Pewter



Saffron



Sky



Smoke

# BOX BAFFLES SLIM

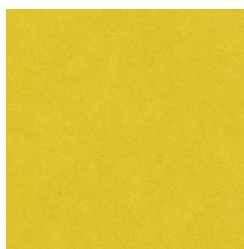
Acoustics » Acoustic Baffles



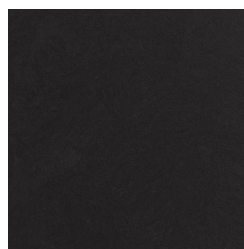
Slate



Storm



Sunshine



Tar



Twilight

## Zintra 24mm Solid PET



Ecru



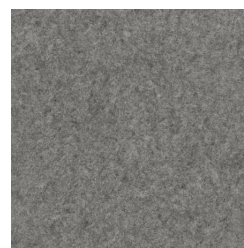
Frost



Grass



Pebble

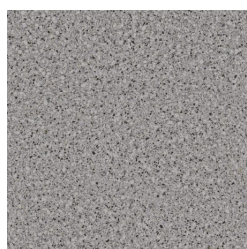


Pewter

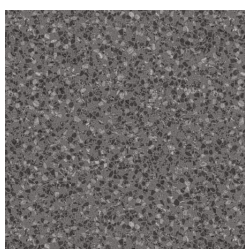


Slate

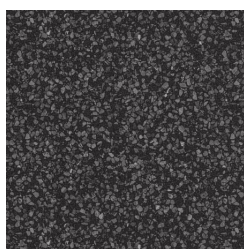
## Zintra Premium Material



Terrazzo Light



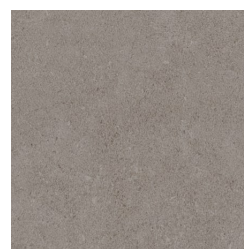
Terrazzo Medium



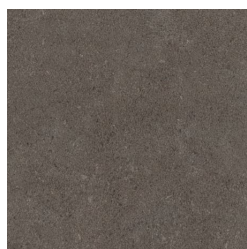
Terrazzo Dark



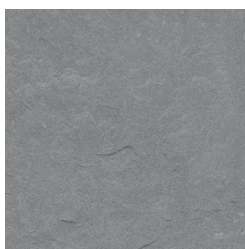
Travertine Light



Travertine Medium



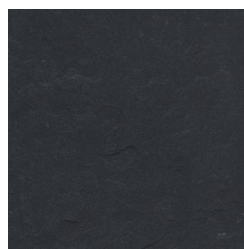
Travertine Dark



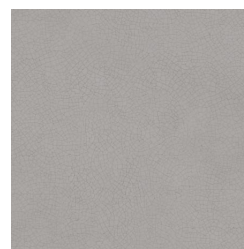
Shale Light



Shale Medium



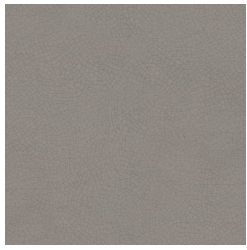
Shale Dark



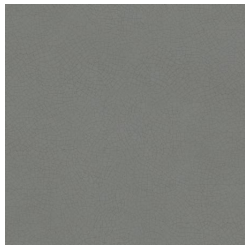
Raku Bone

# BOX BAFFLES SLIM

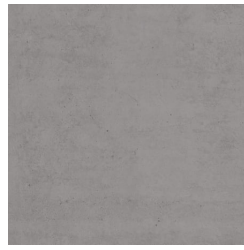
Acoustics » Acoustic Baffles



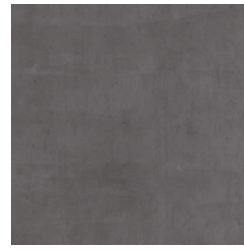
Raku Luster



Raku Jade



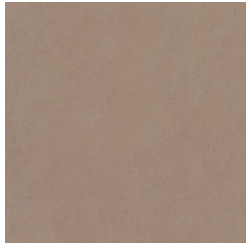
Concrete Cast



Concrete Polished



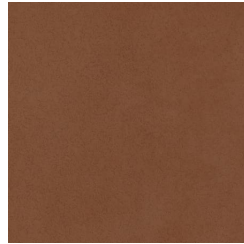
Concrete Dark Tint



Terracotta Sun  
Bleached



Terracotta Mission



Terracotta Antique

## Zintra Premium Wood



Knotty Pine



Maple



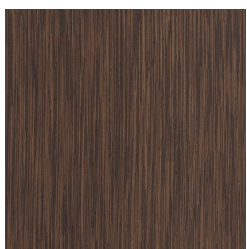
Poplar



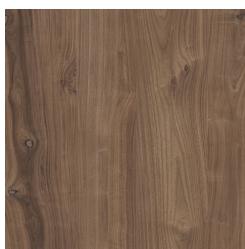
Australian Walnut



Claro Walnut



Palm Wood



Rustic Walnut



Cherry



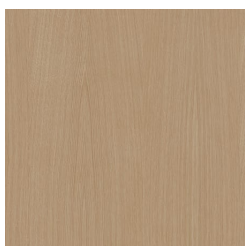
Euro Beech



Lacewood



Redwood



White Oak

## Zintra Art Timber

1300 306 399

info@baresque.com.au

**baresque.com.au**

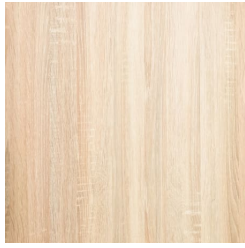


# BOX BAFFLES SLIM

Acoustics » Acoustic Baffles



Blonde Chevron



Light Oak



Log Cabin



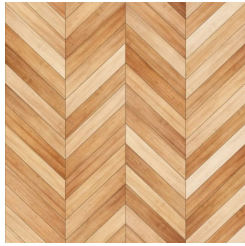
Rough Sawn Timber



Urban Oak



Walnut

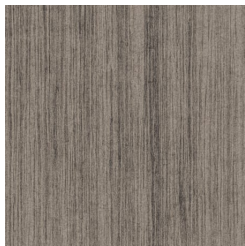


Wooded Herringbone

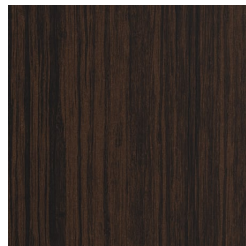
## Zintra Timber



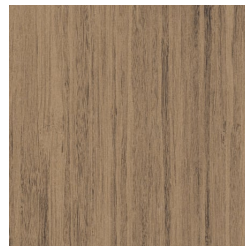
Eucalyptus



Ironbark



Merbau



Spotted Gum