

LES NUANCES

Wallcoverings » Decorative Wallcoverings



Brand: **Bi Mei**

Collections: **Living Woods**

Applications: **Walls**

1300 306 399

info@baresque.com.au

baresque.com.au

1 of 4

LES NUANCES

Wallcoverings » Decorative Wallcoverings

Geometric wallcovering in tonal wood veneers with faceted depth and timeless elegance.

Description

Let Les Nuances transform your walls with striking geometric elegance. This decorative wallcovering layers tonal shades of warm neutrals into a rhythmic, three-dimensional effect that shifts with light and perspective. Its faceted pattern evokes both architectural precision and natural materiality, bringing depth and movement to any interior. Balancing bold design with timeless versatility, Les Nuances offers a sophisticated backdrop that elevates contemporary and classic spaces alike. Part of the Living Woods Collection, each design is crafted from wood veneer. Celebrating the natural beauty of timber, the collection transforms walls with warmth, texture, and timeless sophistication.

Composition

Wood Veneer (240 g/m²)

Pattern Repeat Size

22.9 cm V / 22.9 cm H

Roll Size

92cm x N/A - Available by the lineal metre.

Weight

240 g/m²

Fire Rating

Tested in accordance with AS ISO 9705 2003 for the purpose of determining the Group Number classification as required by the Building Code of Australia for the control of fire spread on interior wall and ceiling linings.

The result achieved was:
Classification - Group 2
Specific Extinction - Less than 250m²/kg

Lead Time

- 4-5 weeks.
- Additional 1-week for Western Australia.

Suggested Installation

Non-reverse hang / butt join.

If your order contains several numbered rolls of one single item/ reference, please first install the roll with the highest number, and then continue to install the other rolls in sequence, in descending order.

Measure and cut 3 strip lengths. Add 5 to 10 cm to top and bottom of each strip.

For printed patterns, plan your match from the roll before cutting

Mark each strip coming from the roll on the back and hang in the same sequence

Reverse alternate lengths when instructed to do so by label on the roll

LES NUANCES

Wallcoverings » Decorative Wallcoverings

Care Instructions

Always use a clean, white, soft cloth.

Remove liquid stains immediately using a dry cloth. Avoid hard scrubbing.

For tougher stains, dampen the cloth with warm water or a weak dilution of liquid detergent and apply being careful not to soak the material. Always work towards the centre of the stain so as to avoid further spreading.

Remove any detergent with a clean, damp cloth. Gently pat dry.

Always test in an inconspicuous area first.

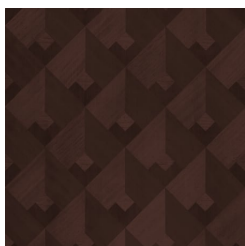
Warranty

2-year warranty. Visit baresque.com.au/warranty for complete details.

LES NUANCES

Wallcoverings » Decorative Wallcoverings

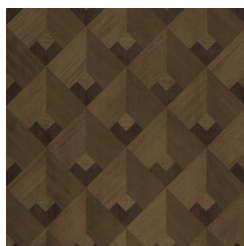
Colour & Finish Options



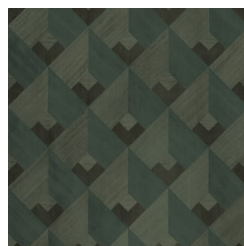
HJ6406



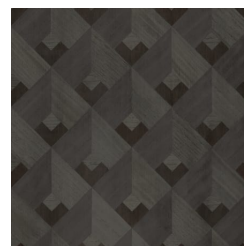
HJ6407



HJ6408



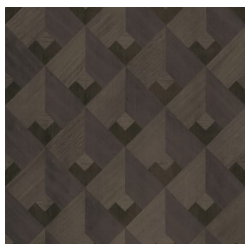
HJ6409



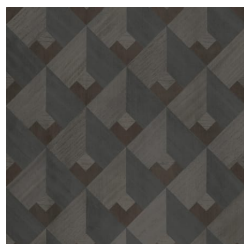
HJ6410



HJ6411



HJ6412



HJ6413