

# CHISEL EMBROIDER

Wallcoverings » Commercial Wallcoverings



Brand: **Xorel**

Applications: **Walls**

1300 306 399

[info@baresque.com.au](mailto:info@baresque.com.au)

[baresque.com.au](http://baresque.com.au)

1 of 5

# CHISEL EMBROIDER

Wallcoverings » Commercial Wallcoverings

A versatile product with large-scale embroidery, multicolour yarns, and bold visual energy.

- ✓ Bleach Cleanable
- ✓ Environmentally Friendly
- ✓ Solution Dyed Yarns
- ✓ High Stain Resistance
- ✓ Phthalate Free
- ✓ Ultra Performance
- ✓ Extended Warranty
- ✓ PVC-Free

## Description

Let Cloister Embroider add vibrant energy to your interiors. Bold multicoloured embroidered yarns dance across the luxurious texture of Xorel Sahara Matte, delivering a sophisticated dry finish. With a larger-scale design and varied pattern placement upon installation, Cloister Embroider blends structured whimsy with visual sizzle. 100% PVC-free, Cloister Embroider is crafted with sustainability in mind. The Xorel construction is supplied unbacked as standard but can be paired with a variety of backings to suit different applications, from panels and upholstered walls to upholstery and wallcovering. Celebrated for durability and sustainability, Xorel offers exceptional cleanability, stain resistance, and long-term performance, even with bleach cleaning, making Cloister Embroider a truly versatile and low-maintenance textile.

## Composition

100% Xorel® (91% Biobased PE, 9% PE)

## Environmental Info

Xorel's high performance does not come at an environmental cost as it achieves high standards for sustainability.

All testing/certifying is done by third party independent organizations including:- Scientific Certification Systems (SCS) – Indoor Air Quality (GOLD)- Vincotte – Biobased Content (LEVELS 3/4)- USDA Biobased – Meeting Government Biobased Regulations (PREFERRED)- Cradle to Cradle Institute – Full Lifecycle Assessment (GOLD)- NSF – FACTS certification (NSF 336)

Xorel products can also help a project achieve multiple credits under LEED for commercial interiors:Material Sourcing (Rapidly Renewable Content)Indoor Air Quality (SCS Indoor Advantage Gold)Material Optimization (Cradle to Cradle Gold)Material Transparency (Healthy Product Declaration)

## Pattern Repeat Size

25 cm V/ 32 cm H

## Roll Size

Unbacked - 142cm

X-Protect Wall - 132cm

X-Protect Sit - 137cm

Acrylic Backed - 137cm x Approx 60m - available by the lineal metre.

MINIMUM ORDER for X-Protect Sit - 5 lineal metres

MINIMUM ORDER for Acrylic Backed - 15 lineal metres

# CHISEL EMBROIDER

Wallcoverings » Commercial Wallcoverings

---

<b>Weight</b>	Wallcovering: 356.8g/m <sup>2</sup> Upholsted Walls: 238.7g/m <sup>2</sup> Upholstery: 239.4g/m <sup>2</sup>
<b>Abrasion</b>	200,000 double rubs (Wyzenbeek)
<b>Fire Rating</b>	As a wallcovering - Tested in accordance with AS/NZS 3837 and AS 5637.1:2015 for the purposes of Group Number Classification as specified in the NCC Volume One Specification C1.10 Clause 4  Classification - Group 1  Specific Extinction - Less than 250 m <sup>2</sup> /kg  As a fabric - Tested in accordance with AS1530.3  Spread of Flame Index - 0  Smoke Developed Index - 4
<b>Lead Time</b>	<ul style="list-style-type: none"><li>• 5-weeks (approx) from Wednesday subject to stock availability.</li><li>• Additional 1-week for Western Australia.</li><li>• Unbacked 2-3 weeks.</li><li>• Express delivery is available subject to a surcharge. Contact Baresque for details and pricing</li></ul>
<b>Suggested Installation</b>	As a wallcovering - trim selvedge and butt join.  Download the Installation Instructions for details.  Baresque recommends and supply Roman brand adhesives and primers.

---

# CHISEL EMBROIDER

Wallcoverings » Commercial Wallcoverings

---

## Care Instructions

Xorel yarns are non-absorbent; dust and stains cannot penetrate them.

Regular maintenance will keep the fabric looking new for many years. Periodic vacuuming will remove dust that may settle between the yarns.

Most stains that dry between the yarns or on the surface can be eliminated by wiping the fabric with a cloth moistened with hot tap water. Some stains may require additional treatment. These stains can be cleaned with a variety of water or solvent based cleaners.

When using solvent based cleaners on paperbacked Xorel fabric, test on a small area first. Residue from these cleaners must be removed with hot water and a clean sponge. After cleaning, towel dry.

Hardened solids can be removed with stiff brush or a sharp-edged instrument without damaging the fabric. However, the brush or sharp instrument should not be used close to seams.

Hospital grade disinfectant cleaners can be safely used on Xorel fabrics. Always follow the directions for the specific brand being used as contact times may vary depending on the product. Diluted bleach solution (up to 40%) can also be used on Xorel for disinfecting purposes.

Always test in an inconspicuous area first. If care instructions don't deliver the expected results, cease cleaning method immediately and contact Baresque for assistance.

---

## Warranty

7-year warranty. Visit [baresque.com.au/warranty](https://www.baresque.com.au/warranty) for complete details.

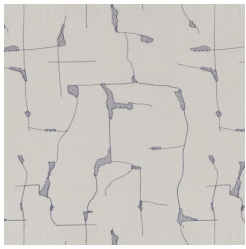
---

# CHISEL EMBROIDER

Wallcoverings » Commercial Wallcoverings

---

## Colour & Finish Options



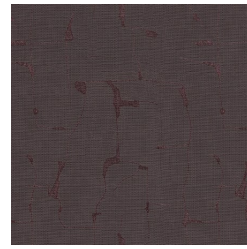
608



611



615



620



629