

NORTHERN LIGHTS

Wallcoverings » Commercial Wallcoverings



Brand: **Bolta**

Applications: **Walls**

1300 306 399

info@baresque.com.au

baresque.com.au

1 of 4

NORTHERN LIGHTS

Wallcoverings » Commercial Wallcoverings

Commercial wallcovering with soft, tonal shifts for a serene, luminous backdrop.

- ✓ Bleach Cleanable
- ✓ EPD Certified
- ✓ Low VOC
- ✓ HPD Certified

Description	Let Northern Lights bring atmospheric beauty to your space. Northern Lights soft, layered pattern of tonal shifts creates a muted, luminous backdrop that adds depth and ambiance to any environment. Crafted with an osnaburg backing and anti-microbial protection, Northern Lights is available in eight colourways designed to coordinate with complementary Bolta patterns. Perfect for hospitality and commercial settings, Northern Lights offers both serene elegance and lasting performance.
Composition	Osnaburg backing - 469.7 g/m2
Environmental Info	<p>J. Josephson is dedicated to complying with today's environmental issues and have eliminated all heavy metals such as lead, mercury, cadmium and chromium from Bolta's Wallcoverings.</p> <ul style="list-style-type: none">- Low VOC- 10% Recycled content- Non-Phthalate- EPD / HPD
Pattern Repeat Size	61 cm V
Roll Size	132/137cm x 27.4m - Available by the lineal metre.
Weight	469.7 g/m2
Fire Rating	<p>Tested in accordance with AS ISO 9705 2003 for the purpose of determining the Group Number classification as required by the Building Code of Australia for the control of fire spread on interior wall and ceiling linings.</p> <p>The result achieved was: Classification - Group 2 Specific Extinction - Less than 250m²/kg</p>
Lead Time	<ul style="list-style-type: none">• 2-weeks (approx.) from Wednesday, subject to stock availability.• Additional 1-week for Western Australia.• Express delivery is available subject to a surcharge. Contact Baresque for details and pricing.

NORTHERN LIGHTS

Wallcoverings » Commercial Wallcoverings

Suggested Installation

Non reverse hang/overlap double cut.

Baresque recommends and supplies Roman brand adhesives and primers.

Care Instructions

Always use a clean, white, soft cloth.

Use cloth with any of the following in preferred order of us:

1: Clear warm water

2: Mild solution of liquid detergent and warm water

3: Isopropyl Alcohol (a.k.a. rubbing alcohol)

4: Do not use solvent based cleaning agents, lacquer thinners, nail polish remover, pine oil or cleaning agents containing bleach, which may cause discoloration over a period of time.

5: It is recommended that cleaning be done with a natural sponge. A cloth or towel should only be used to tamp dry (not rub). Do not use manmade (i.e. polyester) sponges.

Warranty

5-year warranty. Visit baresque.com.au/warranty for complete details.

NORTHERN LIGHTS

Wallcoverings » Commercial Wallcoverings

Colour & Finish Options



Colourway Card



Aglow - BB-NL-06



Artic White - BB-NL-01



Atmospheric Beige -
BB-NL-05



Aurora Blue - BB-
NL-08



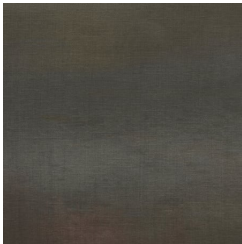
Cream Corona - BB-
NL-06



Grey Haze - BB-NL-02



Magnetic Green - BB-
NL-07



Stormy Sunset - BB-
NL-03