

ORSAY



Brand: **Versa**

Applications: **Walls**

ORSAY

Commercial wallcovering with tweed-inspired texture and a refined, Parisian-inspired palette.

- ✓ Bleach Cleanable
- ✓ EPD Certified
- ✓ Low VOC
- ✓ HPD Certified

Description	Let Orsay bring timeless sophistication to your interiors. This tweed-inspired wallcovering merges history, art, and fashion, blending Parisian elegance with modern versatility. Its layered surface and interlocking slubs create architectural depth, while a refined colour palette balances crisp neutrals, romantic hues, and bold accents for a fresh take on classic style. Perfect for commercial spaces seeking both texture and elegance, Orsay offers a versatile foundation for elevated design.
Composition	100% Vinyl on osnaburg backing - (452 g/m2)
Environmental Info	<p>Formaldehyde free</p> <p>Heavy metals free</p> <p>Perfluorooctanoic acid free</p> <p>No solvent inks</p> <p>Low VOC emissions. Any VOCs dissipate quickly (faster than paint) through normal ventilation and have no recognized adverse impact on indoor air quality.</p> <p>Durability means products do not need to be replaced regularly due to wear and tear and being cleanable, vinyl products are ideal for helping keep commercial environments clean of bacteria.</p> <p>Baresque will only deal with vinyl manufacturers that comply with applicable state and federal regulations, provide a factory that is safe and clean for its employees to work in, recycle scrap and inks during the manufacturing process to minimize waste related to production.</p>
Pattern Repeat Size	N/A
Roll Size	132/137cm x 27.4m - Available by the lineal metre.
Weight	452 g/m2

Fire Rating

Tested in accordance with AS ISO 9705 2003 for the purpose of determining the Group Number classification as required by the Building Code of Australia for the control of fire spread on interior wall and ceiling linings.

The result achieved was:
Classification - Group 2
Specific Extinction - Less than 250m²/kg

Lead Time

- 2-weeks (approx.) from Wednesday, subject to stock availability.
 - Additional 1-week for Western Australia.
 - Express delivery is available subject to a surcharge. Contact Baresque for details and pricing.
-

Suggested Installation

Reverse hang / overlap and double cut.
Baresque recommends and supply Roman brand adhesives and primers.

Care Instructions

Use cloth with any of the following in preferred order of use:

- 1: Clear warm water
- 2: Mild solution of liquid detergent and warm water
- 3: Isopropyl Alcohol (a.k.a. rubbing alcohol)

Remove any detergent with a clean, damp cloth. Gently pat dry.

For more difficult stains, dampen a soft white cloth with a solution of household bleach (10% bleach / 90% water). Rub gently.

Rinse with a water dampened cloth to remove bleach concentration.

Do not use solvent based or concentrated abrasive cleaning agents, lacquer thinners or nail polish remover as these may cause discolouration over a period of time.

Always test in an inconspicuous area first.

If care instructions don't deliver the expected results, cease cleaning method immediately and contact Baresque for assistance.

Warranty

5-year warranty. Visit baresque.com.au/warranty for complete details.

Colour & Finish Options



Colourway Card



Boulevard - A218-810



Buttercream -
A218-724



Chantilly - A218-099



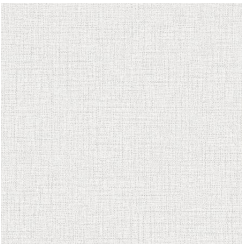
Crepe - A218-163



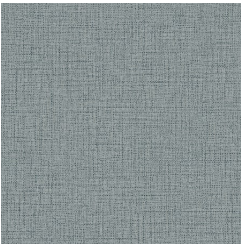
Feather - A218-845



Fountain Pen -
A218-358



Paperback - A218-033



Riviera - A218-375



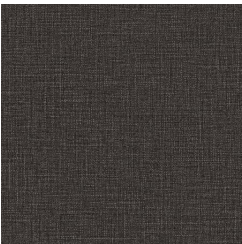
Sand - A218-641



Spiced Peach -
A218-586



Stoneware - A218-879



Umber - A218-622