

DOLCE LINEN



Brand: **Versa**

Applications: **Walls**

DOLCE LINEN

Linen-look commercial wallcovering in bio-sourced vinyl with timeless texture and versatile colourways.

- ✓ Bleach Cleanable
- ✓ EPD Certified
- ✓ Low VOC
- ✓ HPD Certified

Description	Let Dolce Linen bring refined texture to your interiors. This wallcovering replicates the look of linen while being crafted from Type II bio-sourced vinyl. Free of phthalates and made with 70% bio-sourced content, Dolce Linen is 100% recyclable and backed with 100% bio-sourced osnaburg. Available in multiple versatile colours, Dolce Linen offers natural elegance with an eco-conscious foundation for commercial spaces.
Composition	Circon Bio-sourced vinyl on Bio-sourced Osnaburg backing - (452 g/m2)
Environmental Info	<p>Named for its circular economy, Circon is the first vinyl wallcovering technology to close the loop from formation through recycling. By replacing traditional ingredients with rapidly renewable materials that absorb CO2, Circon reduces emissions during manufacturing. Most importantly, Circon delivers on design, performance and sustainability—all at a comparable price to conventional wallcoverings.</p> <p>It means each yard of Circon continues to make an impact beyond its project life.</p> <p>AWARD WINNING</p> <p>CERTIFIED CARBON-NEUTRAL</p> <p>MORE THAN 70% BIO-SOURCED</p> <p>100% RECYCLABLE</p>
Pattern Repeat Size	N/A
Roll Size	132/137cm x 27.4m - Available by the lineal metre.
Weight	452 g/m2
Fire Rating	<p>Tested in accordance with AS ISO 9705 2003 for the purpose of determining the Group Number classification as required by the Building Code of Australia for the control of fire spread on interior wall and ceiling linings.</p> <p>The result achieved was: Classification - Group 2 Specific Extinction - Less than 250m²/kg</p>

DOLCE LINEN

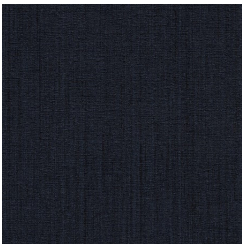
Lead Time	<ul style="list-style-type: none">• 2-weeks (approx.) from Wednesday, subject to stock availability.• Additional 1-week for Western Australia.• Express delivery is available subject to a surcharge. Contact Baresque for details and pricing.
Suggested Installation	<p>Reverse hang / overlap and double cut.</p> <p>Baresque recommends and supply Roman brand adhesives and primers.</p>
Care Instructions	<p>Use cloth with any of the following in preferred order of use:</p> <ol style="list-style-type: none">1: Clear warm water2: Mild solution of liquid detergent and warm water3: Isopropyl Alcohol (a.k.a. rubbing alcohol) <p>Remove any detergent with a clean, damp cloth. Gently pat dry.</p> <p>For more difficult stains, dampen a soft white cloth with a solution of household bleach (10% bleach / 90% water). Rub gently.</p> <p>Rinse with a water dampened cloth to remove bleach concentration.</p> <p>Do not use solvent based or concentrated abrasive cleaning agents, lacquer thinners or nail polish remover as these may cause discolouration over a period of time.</p> <p>Always test in an inconspicuous area first.</p> <p>If care instructions don't deliver the expected results, cease cleaning method immediately and contact Baresque for assistance.</p>
Warranty	5-year warranty. Visit baresque.com.au/warranty for complete details.

DOLCE LINEN

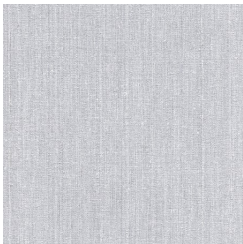
Colour & Finish Options



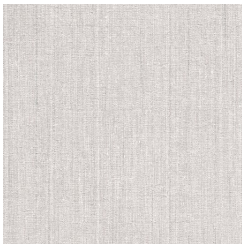
Colourway Card



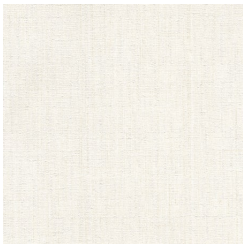
Adritic - ABS05-388



Alphine - ABS05-802



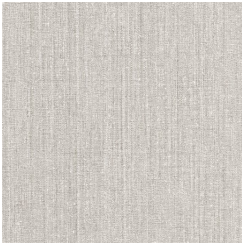
Cashmere - ABS05-815



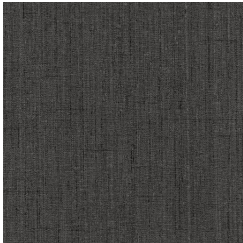
Crema - ABS05-034



Heirloom Gray -
ABS05-847



Muslin - ABS05-123



Overcast - ABS05-816



Rosemary -
ABS05-290



Sommelier -
ABS05-572



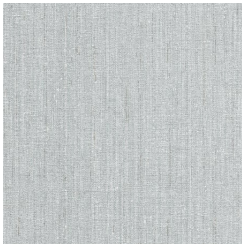
Sparrow - ABS05-623



Sugar Dust -
ABS05-011



Tavern - ABS05-635



Tea Leaf - ABS05-254



Toasted Almond -
ABS05-141



Tuscan Gold -
ABS05-459



White Sand -
ABS05-059