

# ENTWINE

**Fabrics** » Vinyl and Faux Leather Fabrics

---



Brand: **Concertex**

Collections: **Kaleido Collection**

Applications: **Upholstery**

1300 306 399

[info@baresque.com.au](mailto:info@baresque.com.au)

[baresque.com.au](http://baresque.com.au)

1 of 4

# ENTWINE

Fabrics » Vinyl and Faux Leather Fabrics

Basket-weave vinyl with refined texture and enduring, elegant appeal.

- ✓ Bleach Cleanable
- ✓ PVC-Free

- ✓ Graffiti-Free
- ✓ Phthalate Free

- ✓ HPD Certified

Description	Let Entwine weave elegance and strength into your interiors. Entwine’s basket-weave-inspired design, crafted from phthalate-free vinyl with Graffiti-free® protection, delivers both artistry and endurance. Withstanding 300,000 double rubs and bleach cleanable, Entwine is built for beauty and resilience. Part of the Kaleido Collection, which takes inspiration from the mesmerizing world of kaleidoscopes, the collection introduces high-performance fabrics using cutting-edge technology and sustainable materials.
Composition	100% Phthalate Free Vinyl on 100% Polyester backing with Graffiti-Free finish
Environmental Info	PVC/Phthalates free No added fire retardant Healthier Hospitals compliant
Pattern Repeat Size	N/A
Roll Size	132/137cm x 27.4m - Available by the lineal metre.
Abrasion	300,000+ double rubs
Fire Rating	Tested in accordance with AS1530.3 Spread of Flame Index - 0 Smoke Developed Index - 5
Lead Time	<ul style="list-style-type: none"><li>• 2-weeks (approx.) from Wednesday, subject to stock availability.</li><li>• Additional 1-week for Western Australia.</li><li>• Express delivery is available subject to a surcharge. Contact Baresque for details and pricing.</li></ul>

# ENTWINE

Fabrics » Vinyl and Faux Leather Fabrics

---

## Care Instructions

Use cloth with any of the following in preferred order of use:

- 1: Clear warm water
- 2: Mild solution of liquid detergent and warm water
- 3: Isopropyl Alcohol (a.k.a. rubbing alcohol)

Remove any detergent with a clean, damp cloth. Gently pat dry.

For more difficult stains, dampen a soft white cloth with a solution of household bleach (10% bleach / 90% water). Rub gently. Rinse with a water dampened cloth to remove bleach concentration.

Do not use solvent based or concentrated abrasive cleaning agents, lacquer thinners or nail polish remover as these may cause discolouration over a period of time.

Always test in an inconspicuous area first.

If care instructions don't deliver the expected results, cease cleaning method immediately and contact Baresque for assistance.

---

## Warranty

2-year warranty. Visit [baresque.com.au/warranty](https://baresque.com.au/warranty) for complete details.

---

## Colour & Finish Options



Colourway Card



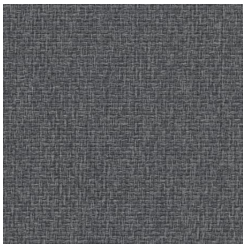
Almond



Blush



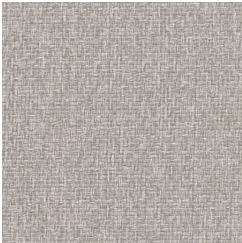
Cashew



Charcoal



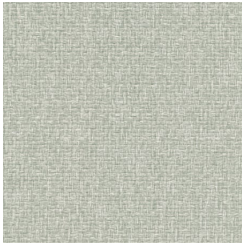
Fog



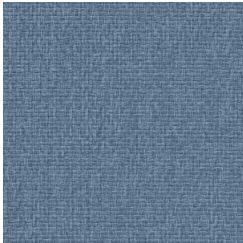
Fresco



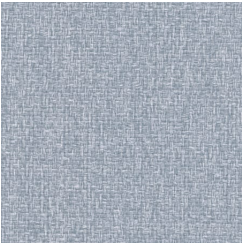
Khaki



Mint



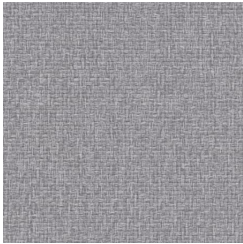
Neptune



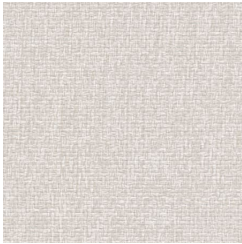
Patina



Porcelain



Stone



Vesper