

# COBBLE

**Fabrics** » Vinyl and Faux Leather Fabrics

---



Brand: **Concertex**

Applications: **Upholstery**

# COBBLE

Fabrics » Vinyl and Faux Leather Fabrics

Digitally printed silicone hybrid with vibrant cobblestone design and lasting performance.

- ✓ **Silicone Hybrid**
- ✓ **Bleach Cleanable**
- ✓ **PVC-Free**
- ✓ **Phthalate Free**
- ✓ **PFAS Free**
- ✓ **Graffiti-Free**

Description	Let Cobble bring timeless character to your interiors. Cobble is a digitally printed silicone hybrid that offers an aerial portrayal of cobblestone streets, transforming an ordinary motif into a pattern fit for contemporary spaces. Rendered in vibrant colours with exceptional clarity, Cobble combines classic appeal with modern performance, featuring bleach cleanability and durability exceeding 300,000 double rubs.
Composition	100% silicone face, Inherently Graffiti-Free, on a 100% polyester backing
Environmental Info	PVC/Phthalates free No added fire retardant Healthier Hospitals compliant
Pattern Repeat Size	N/A
Roll Size	132/137cm x 27.4m - Available by the lineal metre.
Abrasion	300,000+ double rubs (Wyzenbeek)
Fire Rating	Tested in accordance with AS1530.3 Spread of Flame Index - 0 Smoke Developed Index - 5
Lead Time	<ul style="list-style-type: none"><li>• 2-weeks (approx.) from Wednesday, subject to stock availability.</li><li>• Additional 1-week for Western Australia.</li><li>• Express delivery is available subject to a surcharge. Contact Baresque for details and pricing.</li></ul>

# COBBLE

Fabrics » Vinyl and Faux Leather Fabrics

---

## Care Instructions

Silicone products are inherently cleanable. Before attempting to clean stains with a cleaning solution, we encourage you to remove them by wiping with a clean towel, as this will be effective in many cases.

If the stain is wet, gently blot away any extra fluid that might remain on the fabric.

If a stain still remains and additional cleaning is required, a cleaner can be applied lightly to a soft cloth and gently worked into the stained area.

Use clean water to rinse away any remaining cleaning solution.

If the stain is dry, a soft bristle brush can be used to gently remove any remaining accumulated matter. Any loose material can then be vacuumed away and, if a stain remains, cleaning can then be performed as described above.

If a stain cannot be removed by these methods, a solution of 10 parts water to 1 part bleach can be used.

Never use full strength bleach.

---

## Warranty

2-year warranty. Visit [baresque.com.au/warranty](https://baresque.com.au/warranty) for complete details.

---



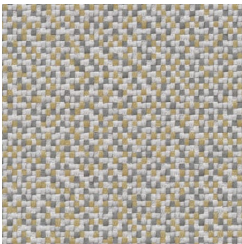
# COBBLE

Fabrics » Vinyl and Faux Leather Fabrics

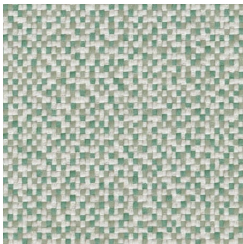
## Colour & Finish Options



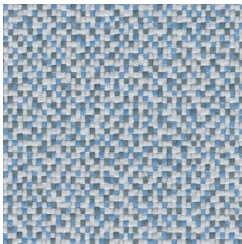
Colourway Card



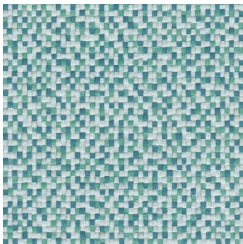
Daybreak



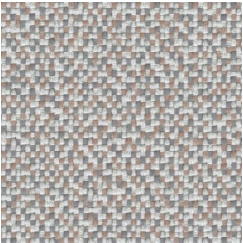
Dew



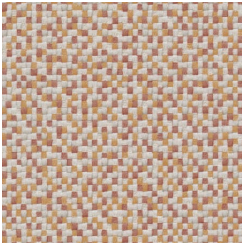
Drizzle



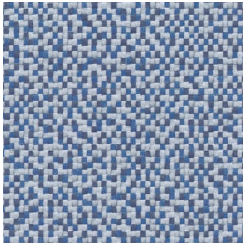
Paradise



Pebble



Sunset



Wave