

TEXTILE BURLAP

Acoustics » Acoustic Panels



Brand: **Zintra**

Collections: **Premium Prints**

Applications: **Walls, Ceilings**

1300 306 399

info@baresque.com.au

baresque.com.au

1 of 4

TEXTILE BURLAP

Acoustics » Acoustic Panels

Burlap evokes the look of textured linen with subtle weave detail and soft depth. One of four Zintra Textile designs, it offers warmth, tactility, and acoustic comfort in 19 rich colorways.

- ✓ Acoustic
- ✓ Bleach Cleanable
- ✓ Easy Clean
- ✓ Easy Install

Description	<p>The Look of Fabric. The Sound of Zintra.</p> <p>Zintra Textile collection redefines PET acoustics with the rich texture of woven materials and bold, market-fresh colorways. Designed to rival traditional fabric solutions, this innovative collection introduces 19 striking Pantone-matched colourways, from quiet neutrals to vibrant juxtaposed tones. The palette has been curated to complement contemporary spaces while 4 distinct designs offer new opportunities for creative expression.</p> <p>A refined transparent print effect mimics the intricacy of real textile weaves, allowing the PET base to subtly shine through. The result is a fabric-like aesthetic with all the acoustic performance Zintra is known for—lightweight, low-VOC, and endlessly versatile.</p> <p>Among the standout designs is Burlap—a refined interpretation of textured linen, offering a soft, organic aesthetic with a subtle woven character. Its natural irregularities and tactile depth evoke the warmth of handcrafted fabric, adding quiet sophistication to any space. The design’s delicate texture catches the light gently, enhancing both visual and acoustic comfort.</p> <p>Zintra Textile designs bring flexibility, offered in both portrait and landscape orientations. Perfect for workplace, education, retail, or hospitality settings—where sound control meets design intent.</p> <p>Textile-inspired. Performance-driven.</p>
How to Specify	<p>1. Select Design</p> <p>2. Select Zintra Colour</p> <p>**Print colour is prematched to the base substrate.</p>
Composition	<p>Zintra Acoustic Panel - 95% Polyester + 5% PLA</p> <p>12mm (1/2") -Density 2.4 kg /m² 0.5 lb/ft133</p>
Sustainability	<p>Zintra is made from 100% recyclable materials.</p> <ul style="list-style-type: none">• 60% post-consumer recycled content from PET bottles.• 35% pre-consumer recycled content from PET chips• 5% polylactic acid (PLA)

TEXTILE BURLAP

Acoustics » Acoustic Panels

Dimensions	2800mm (110")x 1225mm (48") x 12mm (1/2")
Fire Rating	<p>Tested in accordance with AS ISO 9705 2003 for the purpose of determining the Group Number classification required by the Building Code of Australia for the control of fire spread on interior wall and ceiling linings.</p> <p>Classification - Group 1</p> <p>Specific Extinction - Less than 250m²/kg</p>
Supplied As	Flat Panel in selected design and colour.
Assembly & Delivery	<p>Ships Flat Packed.</p> <p>Go to the Technical Documents and download the Installation Guide for more details.</p>
Suggested Installation	<p>Be sure to support the panel during installation to avoid bowing or creasing.</p> <p>Adhere to substrate using contact adhesive, Liquid Nails or Z clips.</p> <p>Panel can also be mechanically fixed using details similar to glass fittings.</p> <p>Download the Handling and Installation guide for full instructions.</p>
Care Instructions	<p>Vacuum to remove dust.</p> <p>Dab Zintra with a damp clean cloth and mild solution of liquid detergent and warm water. Repeat using only clean water, then pat dry with a lint free cloth.</p> <p>For difficult stains, use a solution of household bleach (10% bleach / 90% water). To remove the bleach, repeat using a clean, water dampened cloth, then pat dry.</p> <p>Always test in an inconspicuous area first and if you don't see the expected results, contact us.</p>
Warranty	5-year warranty. Visit baresque.com.au/warranty for complete details.
Customisable	The Zintra Acoustic Solutions range is customisable to your project. Please get in touch with your local+ T2+Z2:AP2
Additional Comments	Directly Mounted 0.45 With 2" (50mm) air gap 0.85 With 6" (152mm) air gap 0.90

TEXTILE BURLAP

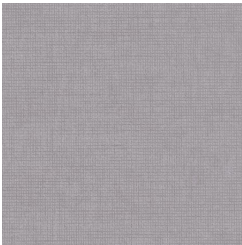
Acoustics » Acoustic Panels

Colour & Finish Options

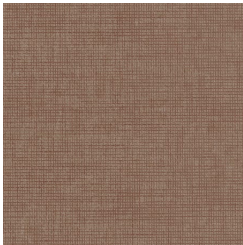
Zintra Textile Burlap



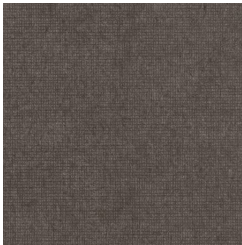
Cadet



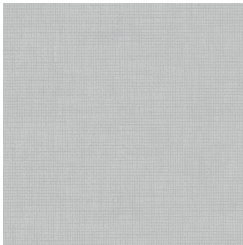
Chambray



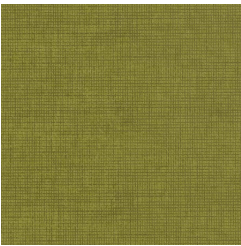
Ecru



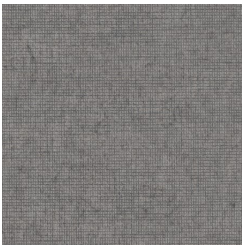
Fossil



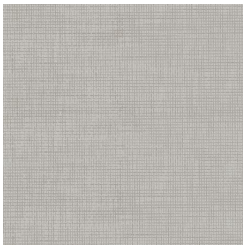
Frost



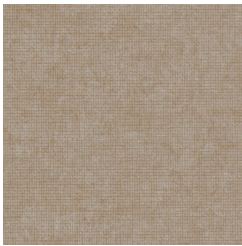
Grass



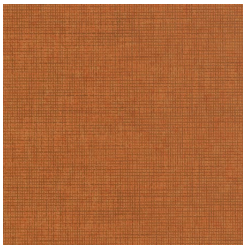
Greige



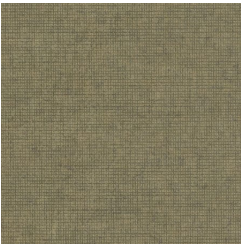
Ivory



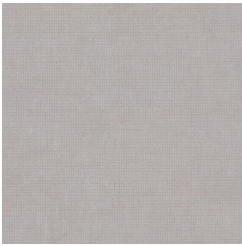
Linen



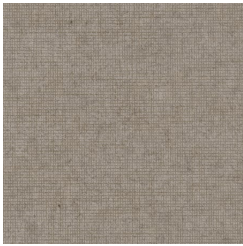
Mandarin



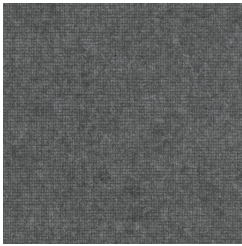
Meadow



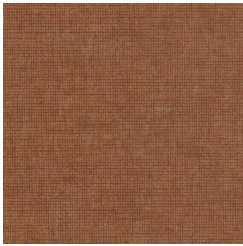
Parchment



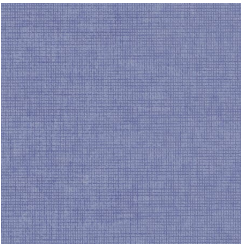
Pebble



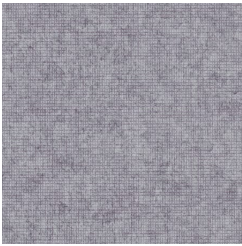
Pewter



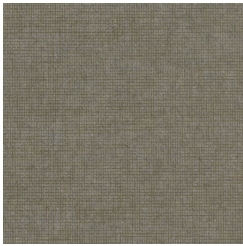
Saffron



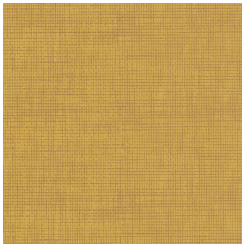
Sky



Smoke



Storm



Sunshine