

BAFFLE SYSTEMS COVE

Acoustics » Acoustic Baffles



Brand: **Zintra**

Collections: **Baffle Systems**

Applications: **Walls, Ceilings, Wall To Ceiling**

1300 306 399

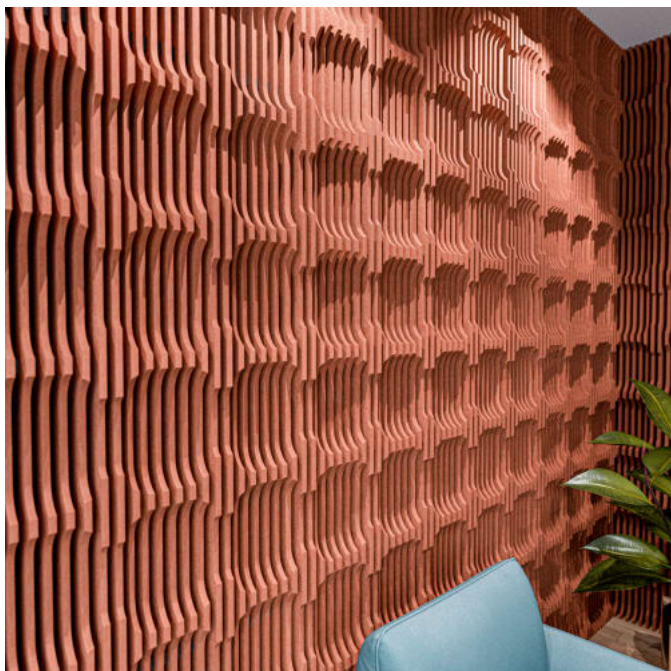
info@baresque.com.au

baresque.com.au

1 of 14

BAFFLE SYSTEMS COVE

Acoustics » Acoustic Baffles



Baffle System Cove Detail - Saffron



Baffle System Cove Detail - Saffron



Baffle System Cove Ceiling Detail



Baffle System Cove Suspension Detail

BAFFLE SYSTEMS COVE

Acoustics » Acoustic Baffles



Baffle System Cove Detail



Baffle System Cove Lite Detail - Saffron



Baffle System Cove Lite Ceiling Detail



Baffle System Cove Lite Suspension Detail

BAFFLE SYSTEMS COVE

Acoustics » Acoustic Baffles



Baffle System Cove Lite Detail



Baffle Systems Direct Mounting Detail

BAFFLE SYSTEMS COVE

Acoustics » Acoustic Baffles

Cove Baffle System is a prefabricated acoustic solution featuring 32 baffles with softly recessed rounded squares. Baffles press-fit into notched cross supports. Suspend from ceilings, mount to walls, or create seamless ceiling-to-wall transitions.

- ✓ Acoustic
- ✓ Bleach Cleanable
- ✓ Easy Clean
- ✓ Easy Install

| | |
|-------------|--|
| Description | <p>Where architecture meets acoustic intent, Zintra Baffle Systems bring sculptural design to ceiling and wall applications. Flowing seamlessly from surface to structure, Zintra baffle designs transform noise control into a design feature—delivering bold, 3D forms that play with light, depth, and shadow.</p> <p>Zintra Baffles are a prefabricated system that offer an innovative replacement to traditional mineral fibre lay systems. Available in full and Lite variations, each design includes 32 or 16 prefabricated baffles and ships with five 25mm notched aluminium tubes in a sleek black powder coat finish—also available in 12 vivid powder coat colors to complement any interior palette.</p> <p>Zintra Baffles aren't just sound absorbers—they're architectural statements. Suspend them from ceilings, mount to walls, or create ceiling-to-wall transitions for continuous visual impact.</p> <p>Cove features a series of softly recessed, rounded square forms that echo the appearance of gentle circles. Evenly spaced across the baffle span, these gentle impressions introduce sculptural depth and visual rhythm to overhead spaces.</p> <p>With superior NRC performance, Zintra's vertical blades present increased surface area to the room enhancing sound absorption. Combined with ready-to-install ease and a wide selection of designs, finishes and print options. Zintra Baffle systems deliver flexible acoustic solutions ideal for large noisy spaces like education settings, commercial offices, hospitality venues, or public zones where atmosphere and performance must work in harmony.</p> <p>Available in 6 designs.</p> <p>Cove Knotty Live Edge Stacked Straight Yin-Yang</p> <p>All designs also available in a Lite version.</p> |
|-------------|--|

| | |
|----------------|--|
| How to Specify | <div>1. Select Design</div> <div>2. Select Zintra Colour</div> |
|----------------|--|

| | |
|-------------|---|
| Composition | <div>Zintra Acoustic Panel - 95% Polyester + 5% PLA</div> <div>12mm (1/2") -Density 2.4 kg /m² 0.5 lb/ft²</div> |
|-------------|---|

BAFFLE SYSTEMS COVE

Acoustics » Acoustic Baffles

| | |
|------------------------|--|
| Sustainability | <p>Zintra is made from 100% recyclable materials.</p> <ul style="list-style-type: none">• 60% post-consumer recycled content from PET bottles.• 35% pre-consumer recycled content from PET chips• 5% polylactic acid (PLA) |
| Dimensions | 953mm (37.5") x 2743mm (108") x 75mm (3") |
| Fire Rating | <p>ASTM-E84 – Class A classification AS ISO 9705 – 2003 – Group 1 classification EN-13501 – B-s2-d0 classification</p> |
| Assembly & Delivery | <p>Ships Flat Packed.</p> <p>Go to the Technical Documents and download the Installation Guide for more details.</p> |
| Suggested Installation | Go to Technical Documents and download the Installation Guide for more details. |
| Care Instructions | <p>Vacuum to remove dust.</p> <p>Dab Zintra with a damp clean cloth and mild solution of liquid detergent and warm water. Repeat using only clean water, then pat dry with a lint free cloth.</p> <p>For difficult stains, use a solution of household bleach (10% bleach / 90% water). To remove the bleach, repeat using a clean, water dampened cloth, then pat dry.</p> <p>Always test in an inconspicuous area first and if you don't see the expected results, contact us.</p> |
| Warranty | 5-year warranty. Visit baresque.com.au/warranty for complete details. |
| Customisable | The Zintra Acoustic Solutions range is customisable to your project. Please get in touch with your local contact for details. |

BAFFLE SYSTEMS COVE

Acoustics » Acoustic Baffles

Colour & Finish Options

Zintra 12mm Solid PET



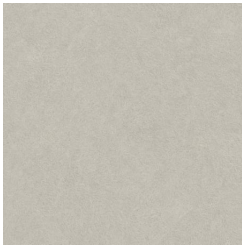
Bark



Brick



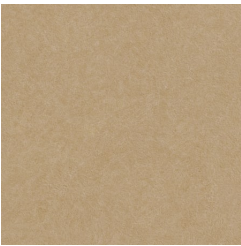
Cadet



Chambray



Cobalt



Ecru



Elderberry



Fossil



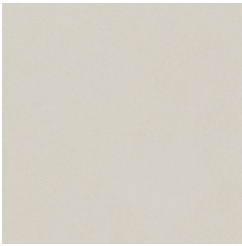
Frost



Grass



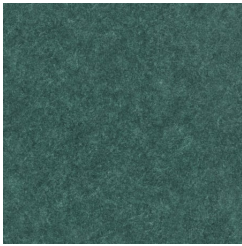
Greige



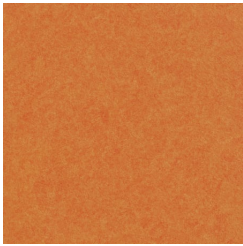
Ivory



Linen



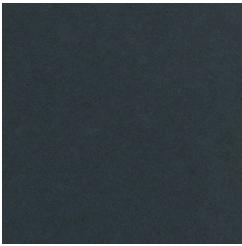
Malachite



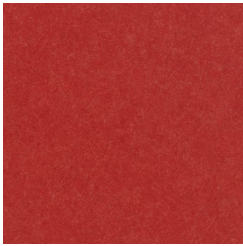
Mandarin



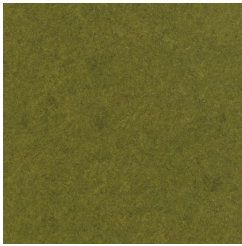
Meadow



Midnight



Ochre



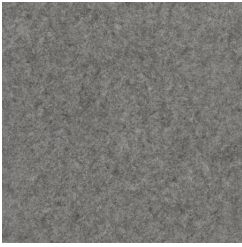
Olive



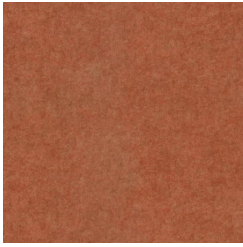
Parchment



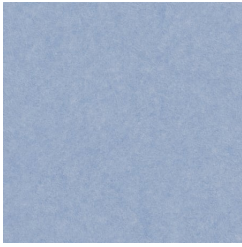
Pebble



Pewter



Saffron



Sky



Smoke

BAFFLE SYSTEMS COVE

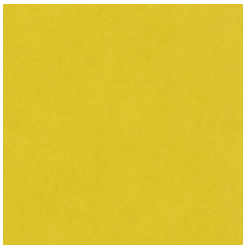
Acoustics » Acoustic Baffles



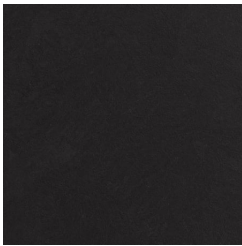
Slate



Storm



Sunshine



Tar



Twilight

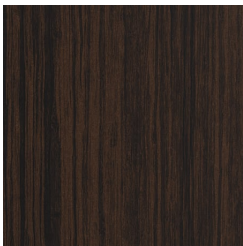
Zintra Timber



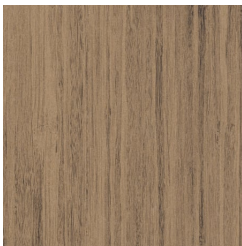
Eucalyptus



Ironbark



Merbau



Spotted Gum

Zintra Premium Wood



Knotty Pine



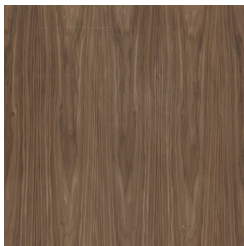
Maple



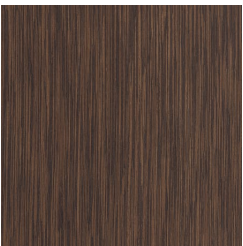
Poplar



Australian Walnut



Claro Walnut



Palm Wood



Rustic Walnut



Cherry



Euro Beech



Lacewood



Redwood



White Oak

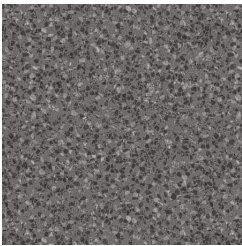
Zintra Premium Material

BAFFLE SYSTEMS COVE

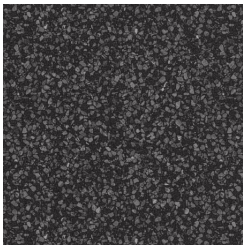
Acoustics » Acoustic Baffles



Terrazzo Light



Terrazzo Medium



Terrazzo Dark



Travertine Light



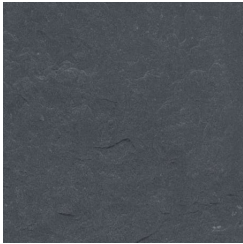
Travertine Medium



Travertine Dark



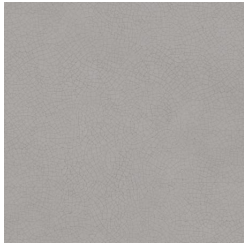
Shale Light



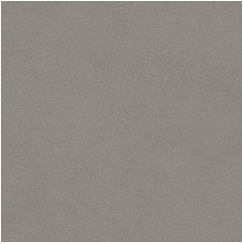
Shale Medium



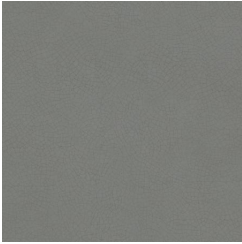
Shale Dark



Raku Bone



Raku Luster



Raku Jade



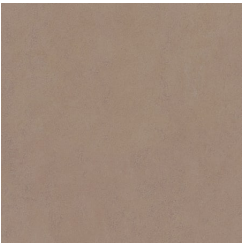
Concrete Cast



Concrete Polished



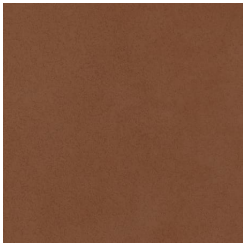
Concrete Dark Tint



Terracotta Sun
Bleached



Terracotta Mission

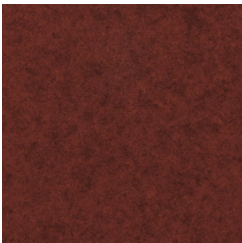


Terracotta Antique

Zintra Studio Colours Pebble



Plnot



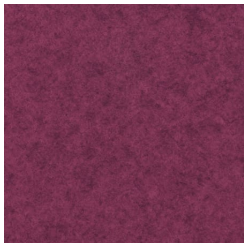
Currant



Rubine



Ceruse



Rhubarb

BAFFLE SYSTEMS COVE

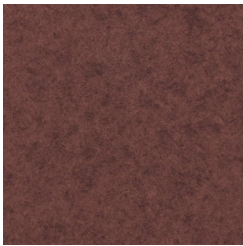
Acoustics » Acoustic Baffles



Rosewood



Mulberry



Mauvelous



Crepe



Papaya



Terracotta



Creamsicle



Buff



Chai



Harvest Moon



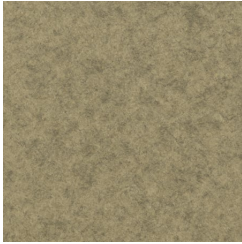
Melon



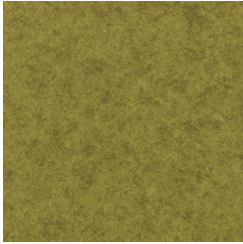
Sunset



Pueblo



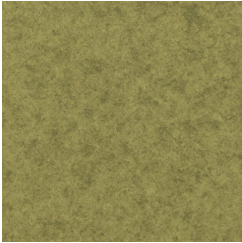
Blonde



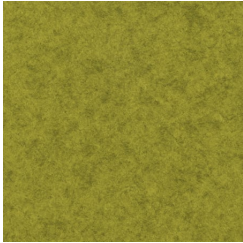
Mellow



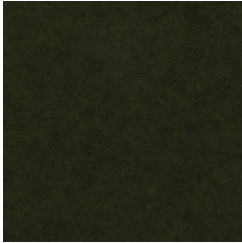
Citron



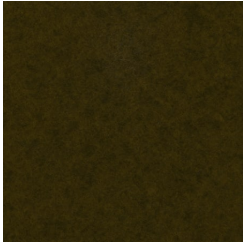
Avocado



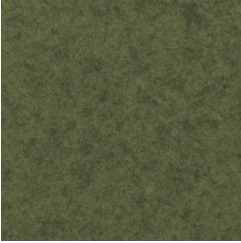
Envy



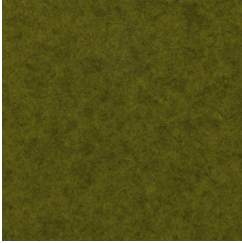
Spruce



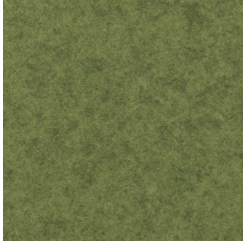
Safari



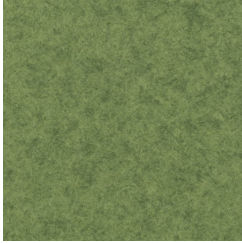
Sage



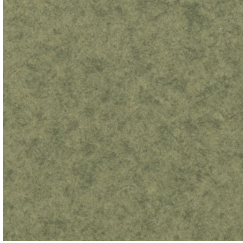
Wasabi



Matcha



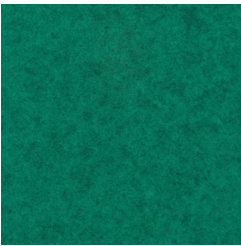
Pistachio



Artichoke

BAFFLE SYSTEMS COVE

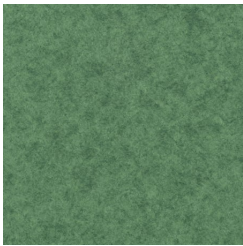
Acoustics » Acoustic Baffles



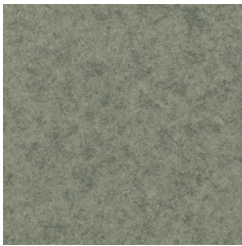
Carmine



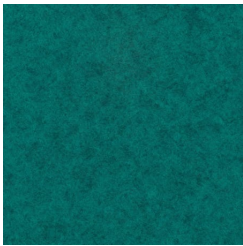
Mojito



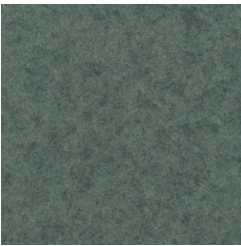
Seaweed



Mist



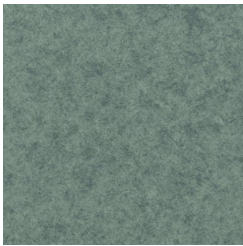
Peacock



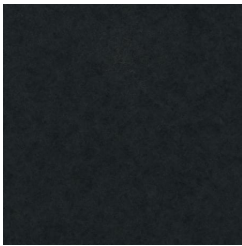
Aegean



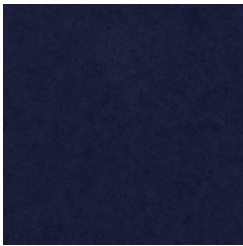
Pigeon



Azure



Sapphire



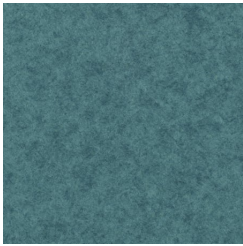
Indigo



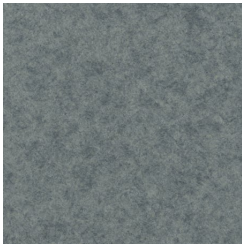
Maya



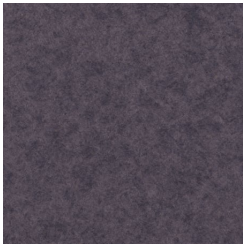
Regatta



Surf



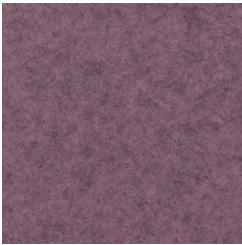
Powder



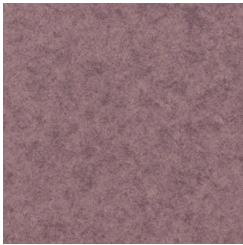
Independence



Plum



Wisteria



Thistle



Oat



Shell



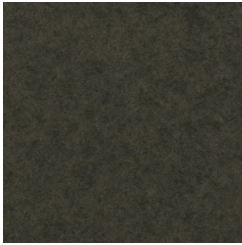
Cinnamon



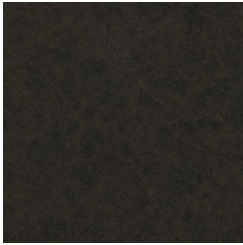
Mocha



Sepia



Oyster



Sterling

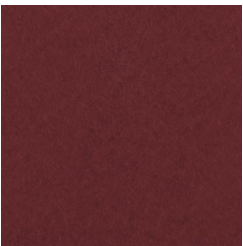
BAFFLE SYSTEMS COVE

Acoustics » Acoustic Baffles

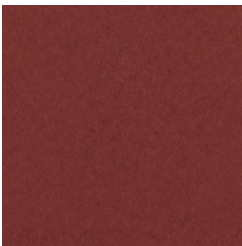


Stone

Zintra Studio Colours Frost



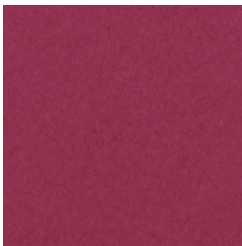
Pinot



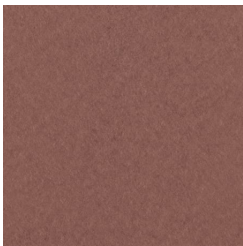
Currant



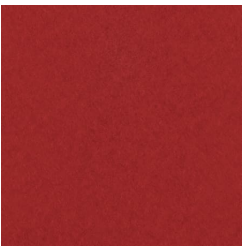
Ceruse



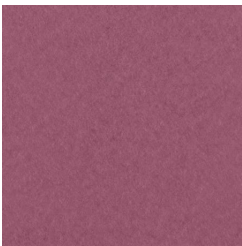
Rhubarb



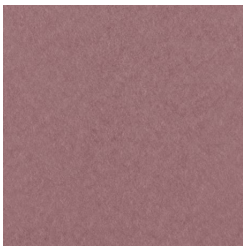
Rosewood



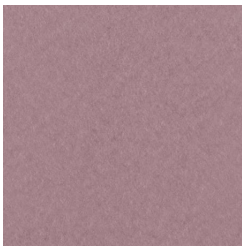
Rubine



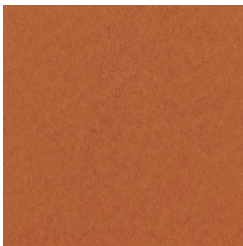
Mulberry



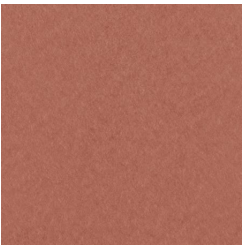
Mauvelous



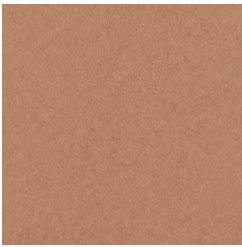
Crepe



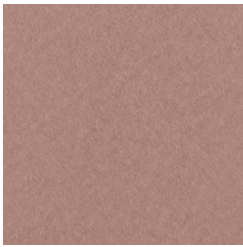
Papaya



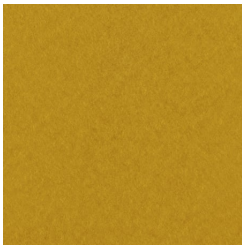
Terracotta



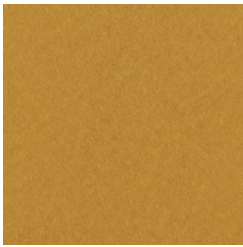
Creamsicle



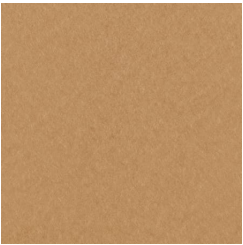
Buff



Chai



Harvest Moon



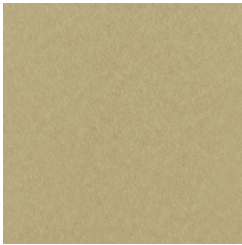
Melon



Sunset



Pueblo



Blonde



Mellow

BAFFLE SYSTEMS COVE

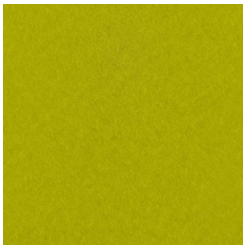
Acoustics » Acoustic Baffles



Citron



Avocado



Envy



Spruce



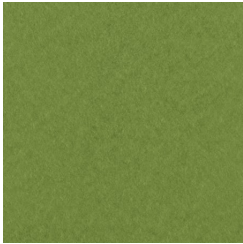
Safari



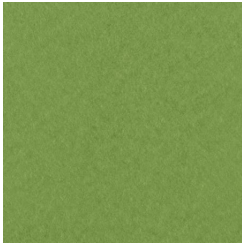
Sage



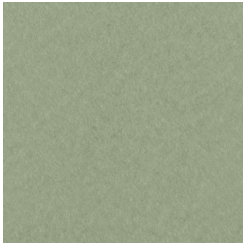
Wasabi



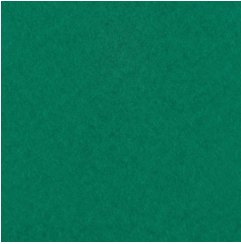
Matcha



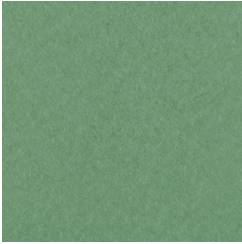
Pistachio



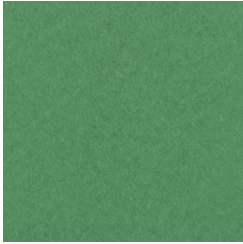
Artichoke



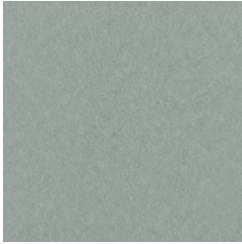
Carmine



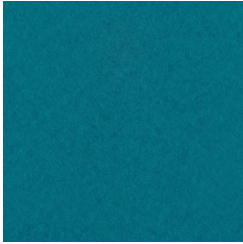
Mojito



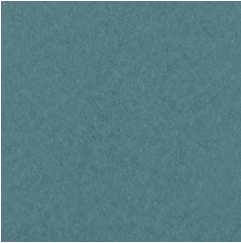
Seaweed



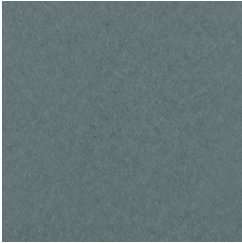
Mist



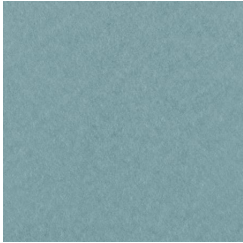
Peacock



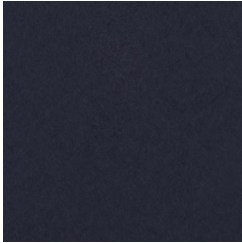
Aegean



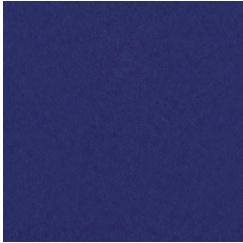
Pigeon



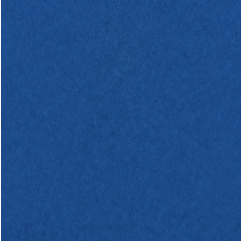
Azure



Sapphire



Indigo



Maya



Regatta



Surf



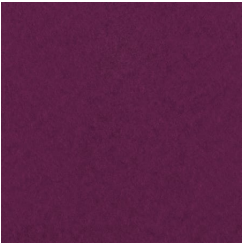
Powder



Independence

BAFFLE SYSTEMS COVE

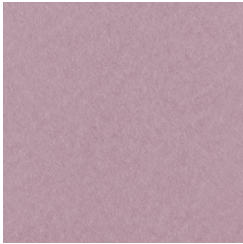
Acoustics » Acoustic Baffles



Plum



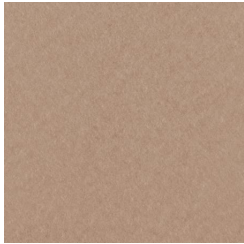
Wisteria



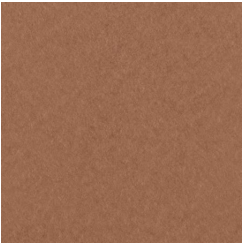
Thistle



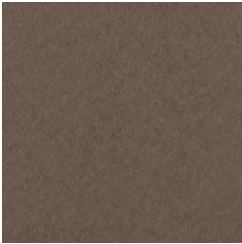
Oat



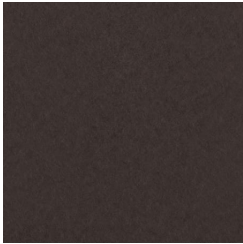
Shell



Cinnamon



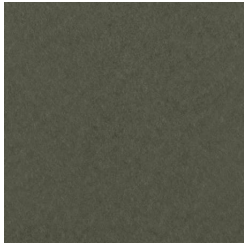
Mocha



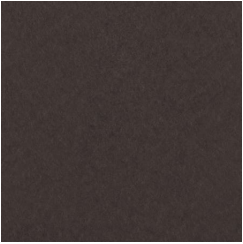
Sepia



Oyster



Sterling



Stone