

ENERCEE PANEL SOLID COLOUR

Acoustics » Acoustic Panels



Applications: **Walls**

ENERCEE PANEL SOLID COLOUR

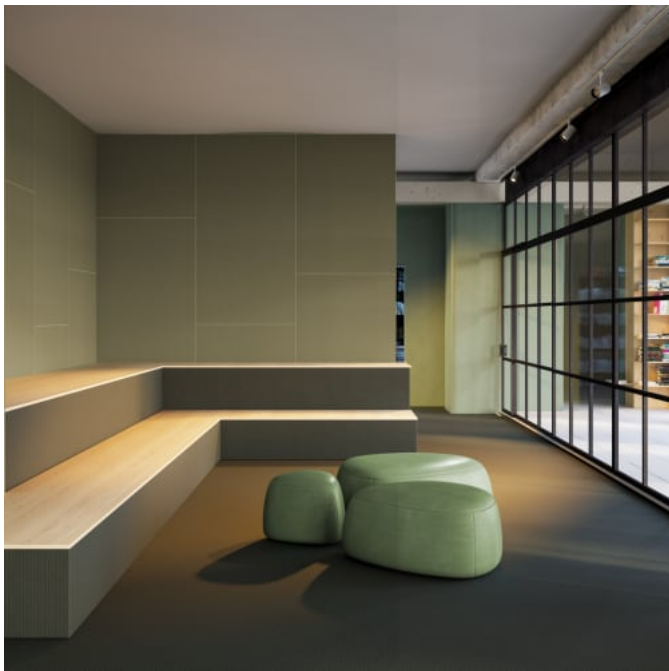
Acoustics » Acoustic Panels



Enercee Panel Solid Colour Woodsmoke



Enercee Panel Solid Colour Fig



Enercee Panel Solid Colour Cypress



Enercee Panel Solid Colour White

ENERCEE PANEL SOLID COLOUR

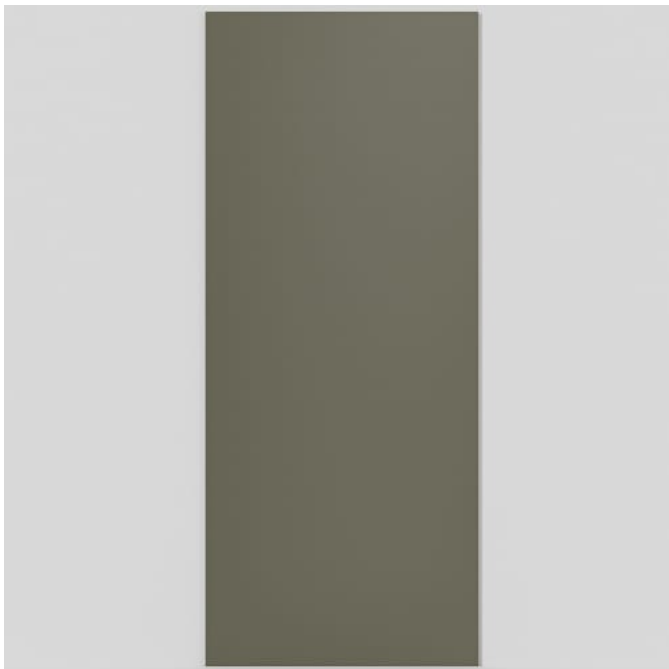
Acoustics » Acoustic Panels



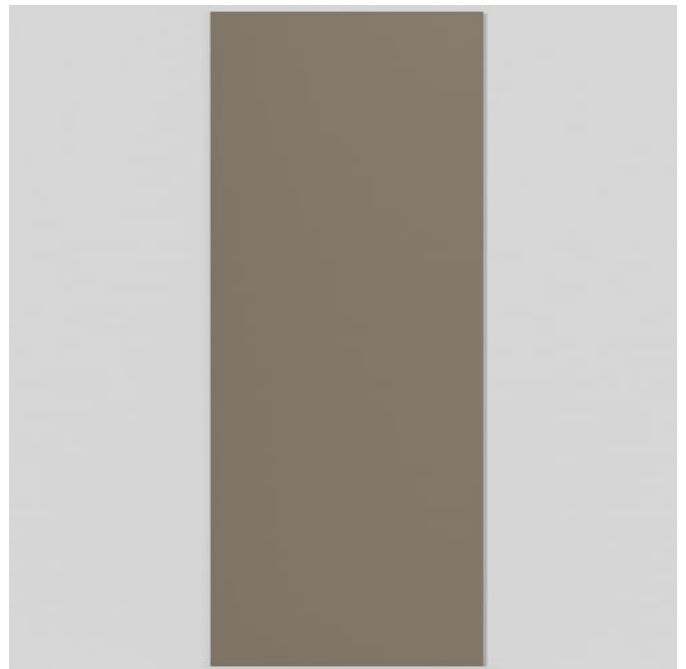
Enercee Panel Solid Colour Woodsmoke 2



Enercee Panel Solid Colour Flagstone



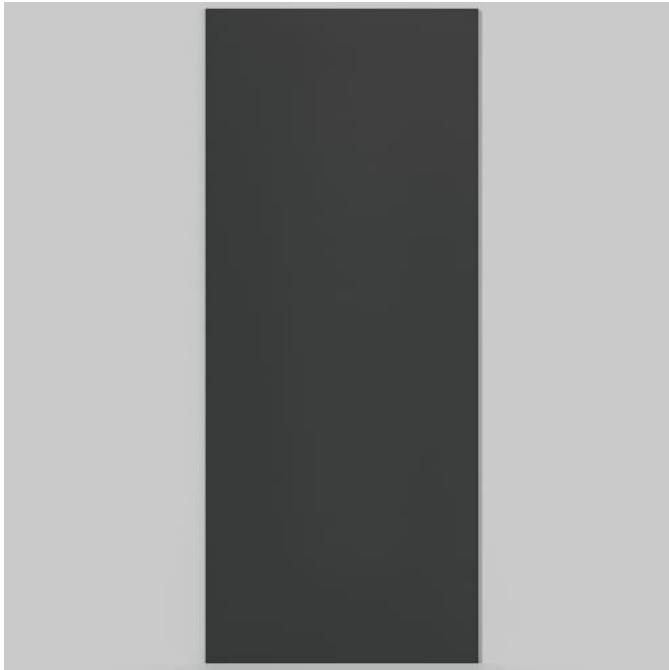
Enercee Panel Cypress



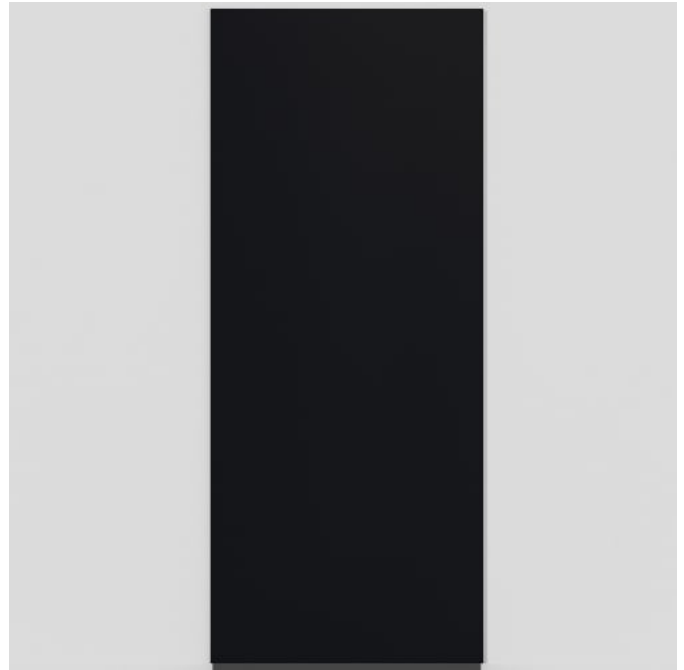
Enercee Panel Flagstone

ENERCEE PANEL SOLID COLOUR

Acoustics » Acoustic Panels



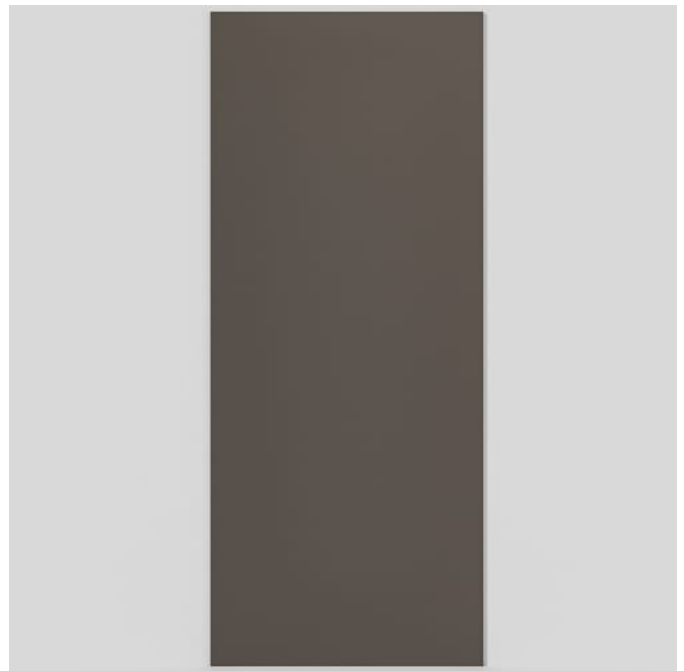
Enercee Panel Pacific



Enercee Panel Evening



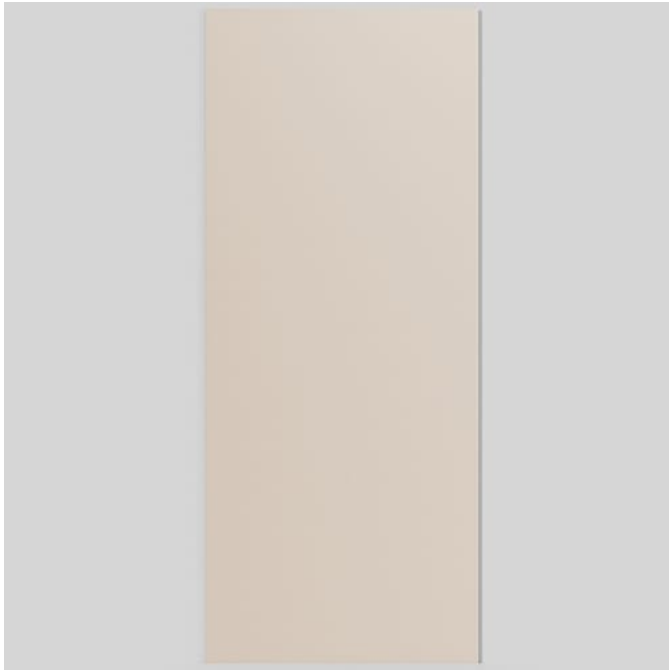
Enercee Panel Fig



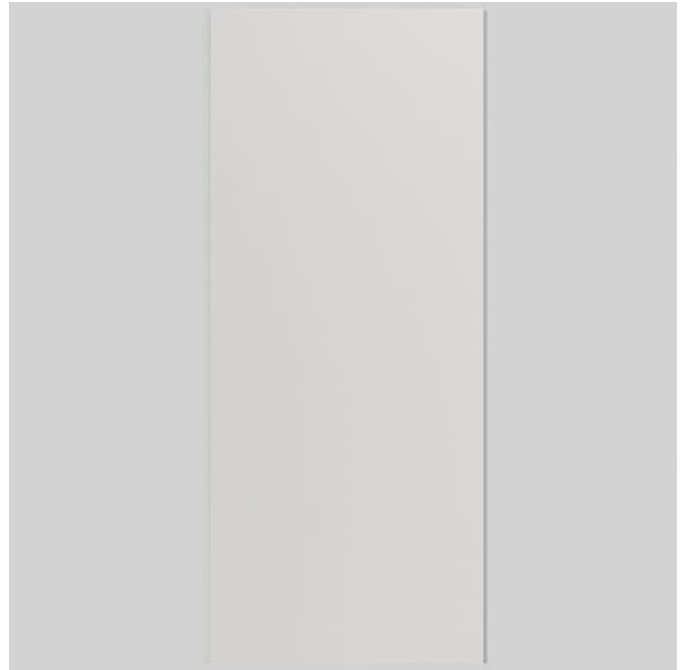
Enercee Panel Woodsmoke

ENERCEE PANEL SOLID COLOUR

Acoustics » Acoustic Panels



Enercee Panel Pearl



Enercee Panel White

ENERCEE PANEL SOLID COLOUR

Acoustics » Acoustic Panels

Silence noise and enhance spaces with Enercee high-performance acoustic panels. Ideal for demanding spaces including healthcare and hospitality with their durable, anti-microbial, fire-rated, sound absorption and stain/moisture resistant properties.

- ✓ Absorbs Noise

✓ Anti-Microbial

✓ Extreme Durability

✓ Low VOC
- ✓ Acoustic

✓ Bleach Cleanable

✓ Easy Install
- ✓ Anti-Bacterial

✓ Easy Clean

✓ High Performance

Description	<p>Silence the noise, elevate the design. Enercee 3D laminate acoustic wall panels deliver high-performance acoustic and design solutions, transforming demanding spaces into comfortable, productive environments. With an NRC rating of 0.65, Enercee Panels effectively reduce disruptive noise, enhancing comfort and focus in hospitality, education, healthcare, and high-traffic areas.</p> <p>Built for durability (impact-resistant) and optimal sound absorption, Enercee Panels feature a 12mm Zintra PET core (95% Polyester + 5% PLA) with a micro-perforated 3D laminate face. Their ISO9705 - AS5637 Group 1 fire-rated construction supports responsible design, while their moisture and stain resistance make them ideal for settings where hygiene and longevity are paramount.</p> <p>Anti-microbial properties (ASTM G21 ASTM G22) further enhance their suitability for hygiene-sensitive environments, and third-party stain testing confirms exceptional resistance to everyday spills—including coffee, oils, juices, and detergents.</p> <p>Available in a versatile Solid Colour range—Cypress, Evening, Fig, Flagstone, Pacific, Pearl, White, and Woodsmoke—or in five natural Wood Grain Finishes to bring warmth and texture to any space.</p> <p>Easy to install, engineered to perform, and designed to elevate any interior.</p>
-------------	--

How to Specify	<div><div>1. Select face colour. Backer colour is predetermined based on the face colour selected.</div><div>2. Select hardware (if required)</div><div>3. Select edge banding (if required)</div></div>
----------------	--

Composition	<div><div>Micro-perforated 3D Laminate face applied to acoustic Zintra PET Panel (95% Polyester + 5% PLA)</div><div>12mm (1/2") -Density 2.4 kg /m² 0.5 lb/ft²</div></div>
-------------	--

ENERCEE PANEL SOLID COLOUR

Acoustics » Acoustic Panels

Sustainability	<p>Zintra is made from 100% recyclable materials.</p> <ul style="list-style-type: none">• 60% post-consumer recycled content from PET bottles.• 35% pre-consumer recycled content from PET chips• 5% polylactic acid (PLA)
Dimensions	1220mm (48") x 2790mm (110") x 13mm (1/2")
Abrasion	ASTM D4060-2010 Standard Test Method for Abrasion Resistance of Organic Coatings by the Taber Abraser
Fire Rating	<p>In accordance with AS ISO 9705 2003 Classification - Group 1 Specific Extinction - Greater than 250 m²/kg ENERCEE is for use in sprinklered buildings only</p>
Acoustic Rating	<p>NRC Directly Mounted 0.65 With 52mm (2") air gap 0.80</p>
Made In	Australia
Supplied As	<p>Ships Flat Pack</p> <p>See Installation Guide in downloads for more details</p>
Assembly & Delivery	<p>Ships Flat Pack</p> <p>Go to the Technical Documents and download the Installation Guide for more details.</p>
Care Instructions	<p>Dab Enercee with a damp clean cloth and mild solution of liquid detergent and warm water.</p> <p>Repeat using only clean water, then pat dry with a lint free cloth.</p> <p>For difficult stains, use a solution of household bleach (10% bleach / 90% water).</p> <p>To remove the bleach, repeat using a clean, water dampened cloth, then pat dry.</p> <p>Always test in an inconspicuous area first and if you don't see the expected results, contact us.</p>
Warranty	5-year warranty.

ENERCEE PANEL SOLID COLOUR

Acoustics » Acoustic Panels

Additional Comments Directly Mounted 0.65 | With 52mm (2") air gap 0.80

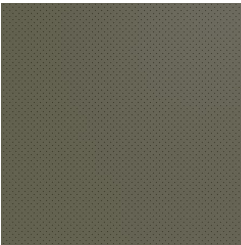
Maximum temperature to avoid is 50°C (120°F)

ENERCEE PANEL SOLID COLOUR

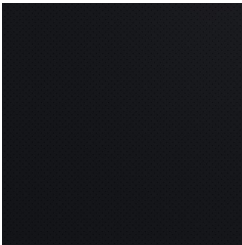
Acoustics » Acoustic Panels

Colour & Finish Options

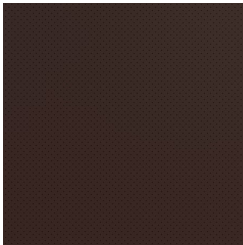
Enercee Panel - Solid Colour



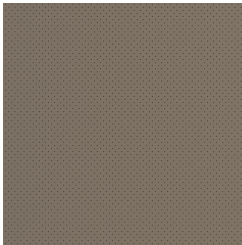
Cypress



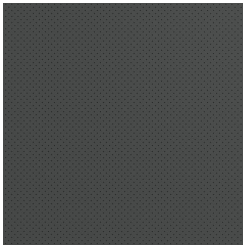
Evening



Fig



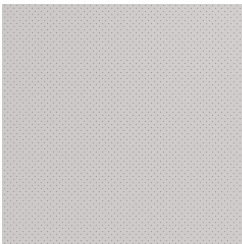
Flagstone



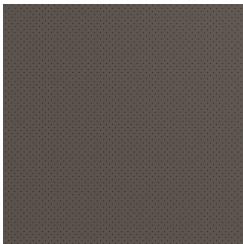
Pacific



Pearl



White



Woodsmoke