

ZARI

Wallcoverings » Commercial Wallcoverings



Brand: **Versa**

Collections: **Circon**

Applications: **Walls**

1300 306 399

info@baresque.com.au

baresque.com.au

1 of 5

ZARI

Wallcoverings » Commercial Wallcoverings



ZARI

Wallcoverings » Commercial Wallcoverings

Capturing the interplay of sunlight and cloth through silken stitching. Drawing on the artisanal quality of embroidery, this enchanting look infuses warmth and radiance to interiors. Each hue in the 12 colourway palette was carefully selected to evoke a sense of the handcrafted including jewel tones and artful serene neutrals.

✓ **Certified Carbon Neutral**

✓ **Low VOC**

✓ **EPD Certified**

✓ **HPD Certified**

✓ **Recyclable**

Description

Circon is a bio-sourced, carbon neutral, recyclable wallcovering. A first-of-its-kind, this innovative new vinyl wallcovering yields over 70% of the material inputs from biogenic rapidly renewable resource-based chemistry.

Named for its circular economy, Circon is the first vinyl wallcovering technology to close the loop from formation through recycling. By replacing traditional ingredients with rapidly renewable materials that absorb CO₂, Circon reduces emissions during manufacturing. Most importantly, Circon delivers on design, performance and sustainability.

Composition

70% Bio-Sourced

Backing: 100% Bio-Sourced Vinyl

Environmental Info

Named for its circular economy, Circon is the first vinyl wallcovering technology to close the loop from formation through recycling. By replacing traditional ingredients with rapidly renewable materials that absorb CO₂, Circon reduces emissions during manufacturing. Most importantly, Circon delivers on design, performance and sustainability—all at a comparable price to conventional wallcoverings.

It means each yard of Circon continues to make an impact beyond its project life.

AWARD WINNING

CERTIFIED CARBON-NEUTRAL

MORE THAN 70% BIO-SOURCED

100% RECYCLABLE

Roll Size

132/137cm x 27.4m - Available by the lineal metre.

Weight

452 g/m²

Fire Rating Tested in accordance with AS ISO 9705 2003 for the purpose of determining the Group Number classification as required by the Building Code of Australia for the control of fire spread on interior wall and ceiling linings.

The result achieved was:
Classification - Group 2
Specific Extinction - Less than 250m²/kg

Lead Time

- 2-weeks (approx.) from Wednesday, subject to stock availability.
- Additional 1-week for Western Australia.
- Express delivery is available subject to a surcharge. Contact Baresque for details and pricing.

Suggested Installation Reverse hang / overlap and double cut.
Baresque recommends and supply Roman brand adhesives and primers.

Care Instructions Use cloth with any of the following in preferred order of use:

- 1: Clear warm water
- 2: Mild solution of liquid detergent and warm water
- 3: Isopropyl Alcohol (a.k.a. rubbing alcohol)

Remove any detergent with a clean, damp cloth. Gently pat dry.

For more difficult stains, dampen a soft white cloth with a solution of household bleach (10% bleach / 90% water). Rub gently.

Rinse with a water dampened cloth to remove bleach concentration.

Do not use solvent based or concentrated abrasive cleaning agents, lacquer thinners or nail polish remover as these may cause discolouration over a period of time.

Always test in an inconspicuous area first.

If care instructions don't deliver the expected results, cease cleaning method immediately and contact Baresque for assistance.

Warranty 5-year warranty. Visit [baresque.com.au/warranty](https://www.baresque.com.au/warranty) for complete details.

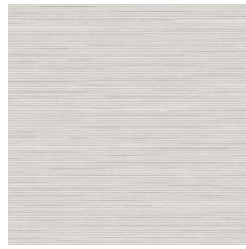
Colour & Finish Options

COLOURWAY CARD

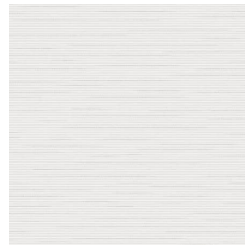
COLOURWAY CARD



ABS04-012-PLATINUM



ABS04-058 STERLING



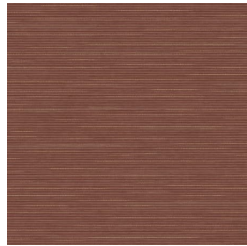
ABS04-094 GLIMMER



ABS04-283 MORNING
FOG



ABS04-372-MARITIME



ABS04-505
COPPERWIRE



ABS04-635 BRONZE



ABS04-691 TOASTED
ALMOND



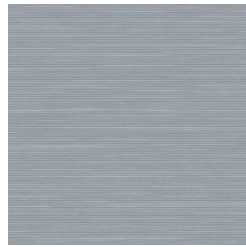
ABS04-760
MARIGOLD



ABS04-819 GOLD
PAVEMENT



ABS04-864 GILDED
CHARCOAL



ABS04-879 PEWTER