

MIRO

Wallcoverings » Commercial Wallcoverings



Brand: **Versa**

Collections: **Circon**

Applications: **Walls**

1300 306 399

info@baresque.com.au

baresque.com.au

1 of 5

MIRO

Wallcoverings » Commercial Wallcoverings



Building upon the foundation of Miro Texture, introducing abstract collage elements in a layering effect. Resembling a composition and aesthetic exploration of forms and textures makes a dynamic, expressive statement. Its 8 colourways palette offers a symphony of the harmonious blend of colours found in nature from sunlit neutrals to earthy browns, and sky blue.

✓ **Certified Carbon Neutral**

✓ **100% Recycled**

✓ **Low VOC**

✓ **EPD Certified**

✓ **HPD Certified**

Description

Circon is a bio-sourced, carbon neutral, recyclable wallcovering. A first-of-its-kind, this innovative new vinyl wallcovering yields over 70% of the material inputs from biogenic rapidly renewable resource-based chemistry.

Named for its circular economy, Circon is the first vinyl wallcovering technology to close the loop from formation through recycling. By replacing traditional ingredients with rapidly renewable materials that absorb CO₂, Circon reduces emissions during manufacturing. Most importantly, Circon delivers on design, performance and sustainability.

Composition

70% Bio-Sourced

Backing: 100% Bio-Sourced Vinyl

Environmental Info

Named for its circular economy, Circon is the first vinyl wallcovering technology to close the loop from formation through recycling. By replacing traditional ingredients with rapidly renewable materials that absorb CO₂, Circon reduces emissions during manufacturing. Most importantly, Circon delivers on design, performance and sustainability—all at a comparable price to conventional wallcoverings.

It means each yard of Circon continues to make an impact beyond its project life.

AWARD WINNING

CERTIFIED CARBON-NEUTRAL

MORE THAN 70% BIO-SOURCED

100% RECYCLABLE

Pattern Repeat Size

58.4 cm V

Roll Size

132/137cm x 27.4m - Available by the lineal metre.

Weight

452 g/m²

Fire Rating	<p>Tested in accordance with AS ISO 9705 2003 for the purpose of determining the Group Number classification as required by the Building Code of Australia for the control of fire spread on interior wall and ceiling linings.</p> <p>Classification - Group 3 Specific Extinction - Less than 250m²/kg</p>
Lead Time	<ul style="list-style-type: none">• 2-weeks (approx.) from Wednesday, subject to stock availability.• Additional 1-week for Western Australia.• Express delivery is available subject to a surcharge. Contact Baresque for details and pricing.
Suggested Installation	<p>Reverse hang / Straight across match.</p> <p>Baresque recommends and supplies Roman brand adhesives and primers.</p>
Care Instructions	<p>Use cloth with any of the following in preferred order of use:</p> <ol style="list-style-type: none">1: Clear warm water2: Mild solution of liquid detergent and warm water3: Isopropyl Alcohol (a.k.a. rubbing alcohol) <p>Remove any detergent with a clean, damp cloth. Gently pat dry.</p> <p>For more difficult stains, dampen a soft white cloth with a solution of household bleach (10% bleach / 90% water). Rub gently.</p> <p>Rinse with a water dampened cloth to remove bleach concentration.</p> <p>Do not use solvent based or concentrated abrasive cleaning agents, lacquer thinners or nail polish remover as these may cause discolouration over a period of time.</p> <p>Always test in an inconspicuous area first.</p> <p>If care instructions don't deliver the expected results, cease cleaning method immediately and contact Baresque for assistance.</p>
Warranty	<p>5-year warranty. Visit baresque.com.au/warranty for complete details.</p>

Colour & Finish Options

COLOURWAY
CARD

COLOURWAY CARD



ABS02-006 DAPPLED
LIGHT



ABS02-024 AL
FRESCO



ABS02-081 SALTBED



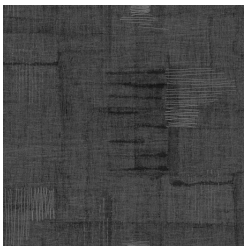
ABS02-312
AFTERNOON



ABS02-497 VINTAGE
TOUCH



ABS02-619 MOCHA



ABS02-803 IRON



ABS02-885 STONE