

LOMA

Wallcoverings » Commercial Wallcoverings



Brand: **Versa**

Collections: **Circon**

Applications: **Walls**

1300 306 399

info@baresque.com.au

baresque.com.au

1 of 5

LOMA

Wallcoverings » Commercial Wallcoverings



LOMA

Wallcoverings » Commercial Wallcoverings

A captivating design with hand-drawn organic shapes reflecting the softened formations of land sculpted by nature. Bold lines create a grounded pattern with precision geometry. The 8 colourway colour palette evokes the hues of the desert, with shades of terracotta, sandstone, and teal

✓ **Certified Carbon Neutral**

✓ **100% Recycled**

✓ **Low VOC**

✓ **EPD Certified**

✓ **HPD Certified**

Description

Circon is a bio-sourced, carbon neutral, recyclable wallcovering. A first-of-its-kind, this innovative new vinyl wallcovering yields over 70% of the material inputs from biogenic rapidly renewable resource-based chemistry.

Named for its circular economy, Circon is the first vinyl wallcovering technology to close the loop from formation through recycling. By replacing traditional ingredients with rapidly renewable materials that absorb CO₂, Circon reduces emissions during manufacturing. Most importantly, Circon delivers on design, performance and sustainability.

Composition

70% Bio-Sourced

Backing: 100% Bio-Sourced Vinyl

Environmental Info

Named for its circular economy, Circon is the first vinyl wallcovering technology to close the loop from formation through recycling. By replacing traditional ingredients with rapidly renewable materials that absorb CO₂, Circon reduces emissions during manufacturing. Most importantly, Circon delivers on design, performance and sustainability—all at a comparable price to conventional wallcoverings.

It means each yard of Circon continues to make an impact beyond its project life.

AWARD WINNING

CERTIFIED CARBON-NEUTRAL

MORE THAN 70% BIO-SOURCED

100% RECYCLABLE

Pattern Repeat Size

71.1cm V

Roll Size

132/137cm x 27.4m - Available by the lineal metre.

Weight

452 g/m²

LOMA

Wallcoverings » Commercial Wallcoverings

Fire Rating

Tested in accordance with AS ISO 9705 2003 for the purpose of determining the Group Number classification as required by the Building Code of Australia for the control of fire spread on interior wall and ceiling linings.

The result achieved was:
Classification - Group 2
Specific Extinction - Less than 250m²/kg

Lead Time

- 2-weeks (approx.) from Wednesday, subject to stock availability.
 - Additional 1-week for Western Australia.
 - Express delivery is available subject to a surcharge. Contact Baresque for details and pricing.
-

Suggested Installation

Non-reverse hang alternate drops/straight across match/overlap and double cut.
Baresque recommends and supplies Roman brand adhesives and primers.

Care Instructions

Use cloth with any of the following in preferred order of use:

- 1: Clear warm water
- 2: Mild solution of liquid detergent and warm water
- 3: Isopropyl Alcohol (a.k.a. rubbing alcohol)

Remove any detergent with a clean, damp cloth. Gently pat dry.

For more difficult stains, dampen a soft white cloth with a solution of household bleach (10% bleach / 90% water). Rub gently.

Rinse with a water dampened cloth to remove bleach concentration.

Do not use solvent based or concentrated abrasive cleaning agents, lacquer thinners or nail polish remover as these may cause discolouration over a period of time.

Always test in an inconspicuous area first.

If care instructions don't deliver the expected results, cease cleaning method immediately and contact Baresque for assistance.

Warranty

5-year warranty. Visit [baresque.com.au/warranty](https://www.baresque.com.au/warranty) for complete details.

Colour & Finish Options

COLOURWAY CARD

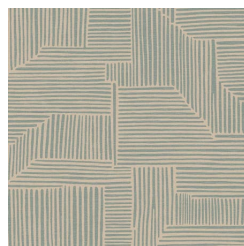
COLOURWAY CARD



ABS03-061 COLD
FOAM



ABS03-080 IVORY



ABS03-297 MEADOW



ABS03-336 NATURAL
SPRING



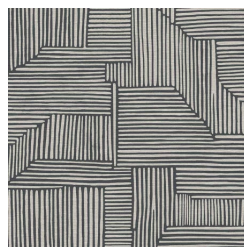
ABS03-474 PAPAYA



ABS03-758 CABANA



ABS03-825 WHEAT



ABS03-849
WINDFLOWER