

STITCHED SASHIKO PVC FREE

Wallcoverings » Commercial Wallcoverings



Brand: **Koroseal**

Applications: **Walls**

1300 306 399

info@baresque.com.au

baresque.com.au

1 of 5

STITCHED SASHIKO PVC FREE

Wallcoverings » Commercial Wallcoverings



STITCHED SASHIKO PVC FREE

Wallcoverings » Commercial Wallcoverings

Inspired by Japanese mending and natural fibers, Stitched Sashiko features soft shapes rhythmically tied by vertical stitching rows.

- ✓ **PVC-Free**
- ✓ **Low VOC**
- ✓ **Recyclable**
- ✓ **UV Resistance**

Description	Inspired by the traditional Japanese mending technique and the timeless use of natural fibres, Stitched Sashiko showcases a rhythmic layout of soft shapes, elegantly held together by vertical rows of stitching.
Composition	Thermo Polymer Olefin (TPO). Backing: Non-Woven.
Pattern Repeat Size	46cm V / 132cm H
Weight	452 g/m²
Fire Rating	<p>Tested in accordance with AS ISO 9705 2003 for the purpose of determining the Group Number classification as required by the Building Code of Australia for the control of fire spread on interior wall and ceiling linings.</p> <p>The result achieved was: Classification - Group 2 Specific Extinction - Less than 250m²/kg</p>
Lead Time	<ul style="list-style-type: none">• 2-weeks (approx.) from Wednesday, subject to stock availability.• Additional 1-week for Western Australia.• Express delivery is available subject to a surcharge. Contact Baresque for details and pricing.
Suggested Installation	<p>Non-reverse hang alternate drops/straight across match/overlap and double cut.</p> <p>Baresque recommends and supplies Roman brand adhesives and primers.</p>

STITCHED SASHIKO PVC FREE

Wallcoverings » Commercial Wallcoverings

Care Instructions

Use cloth with any of the following in preferred order of use:

- 1: Clear warm water
- 2: Mild solution of liquid detergent and warm water
- 3: Isopropyl Alcohol (a.k.a. rubbing alcohol)

Remove any detergent with a clean, damp cloth. Gently pat dry.

For more difficult stains, dampen a soft white cloth with a solution of household bleach (10% bleach / 90% water). Rub gently.

Rinse with a water dampened cloth to remove bleach concentration.

Do not use solvent based or concentrated abrasive cleaning agents, lacquer thinners or nail polish remover as these may cause discolouration over a period of time.

Always test in an inconspicuous area first.

If care instructions don't deliver the expected results, cease cleaning method immediately and contact Baresque for assistance.

Warranty

5-year warranty. Visit baresque.com.au/warranty for complete details.

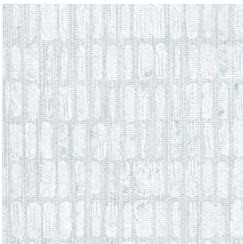
STITCHED SASHIKO PVC FREE

Wallcoverings » Commercial Wallcoverings

Colour & Finish Options

COLOURWAY CARD

COLOURWAY CARD



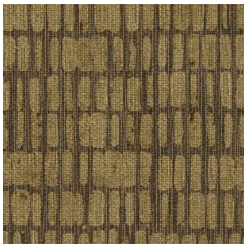
SK81-01 ECLIPSIS



SK81-02 WHIPSTITCH



SK81-03 BAMBOO



SK81-04 KINSHI



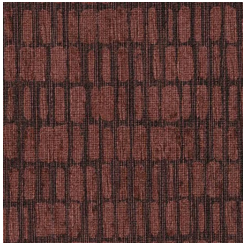
SK81-05 OVERCAST



SK81-06 PAMPAS
GRASS



SK81-07 NO WASTE



SK81-08 PERSIMMON
LEAF