

# LINSEY PVC FREE

Wallcoverings » Commercial Wallcoverings



Brand: **Koroseal**

Applications: **Walls**

1300 306 399

[info@baresque.com.au](mailto:info@baresque.com.au)

[baresque.com.au](http://baresque.com.au)

1 of 5

# LINSEY PVC FREE

Wallcoverings » Commercial Wallcoverings

---



# LINSEY PVC FREE

Wallcoverings » Commercial Wallcoverings

Linsey's textured design reflects its rich heritage. Delicate lines create a subtle play of colour and texture, perfect for a timeless look.

✓ **PVC-Free**

✓ **Low VOC**

✓ **Recyclable**

✓ **UV Resistance**

Description	<p>Linsey is inspired by the organic texture and delicate intricacies of its rich cultural history.</p> <p>Its unpretentious elegance and refined lines contribute to a subtle interplay of colours and textures, mirroring the organic essence in the pattern.</p>
Composition	Thermo Polymer Olefin (TPO). Backing: Non-Woven
Roll Size	132/137cm x 27.4m - Available by the lineal metre.
Weight	452 g/m <sup>2</sup>
Fire Rating	<p>Tested in accordance with AS ISO 9705 2003 for the purpose of determining the Group Number classification as required by the Building Code of Australia for the control of fire spread on interior wall and ceiling linings.</p> <p>The result achieved was: Classification - Group 2 Specific Extinction - Less than 250m<sup>2</sup>/kg</p>
Lead Time	<ul style="list-style-type: none"><li>• 2-weeks (approx.) from Wednesday, subject to stock availability.</li><li>• Additional 1-week for Western Australia.</li><li>• Express delivery is available subject to a surcharge. Contact Baresque for details and pricing.</li></ul>
Suggested Installation	<p>Reverse hang / overlap and double cut.</p> <p>Baresque recommends and supply Roman brand adhesives and primers.</p>

# LINSEY PVC FREE

Wallcoverings » Commercial Wallcoverings

---

## Care Instructions

Use cloth with any of the following in preferred order of use:

- 1: Clear warm water
- 2: Mild solution of liquid detergent and warm water
- 3: Isopropyl Alcohol (a.k.a. rubbing alcohol)

Remove any detergent with a clean, damp cloth. Gently pat dry.

For more difficult stains, dampen a soft white cloth with a solution of household bleach (10% bleach / 90% water). Rub gently.

Rinse with a water dampened cloth to remove bleach concentration.

Do not use solvent based or concentrated abrasive cleaning agents, lacquer thinners or nail polish remover as these may cause discolouration over a period of time.

Always test in an inconspicuous area first.

If care instructions don't deliver the expected results, cease cleaning method immediately and contact Baresque for assistance.

---

## Warranty

5-year warranty. Visit [baresque.com.au/warranty](https://baresque.com.au/warranty) for complete details.

---



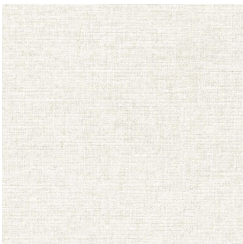
# LINSEY PVC FREE

Wallcoverings » Commercial Wallcoverings

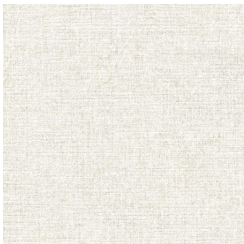
## Colour & Finish Options

### COLOURWAY CARD

LINSEY COLOURWAY  
CARD



SE81-01 LOOM



SE81-02 COTTON



SE81-03 TABBY



SE81-04 MANILA



SE81-05 FLEECE



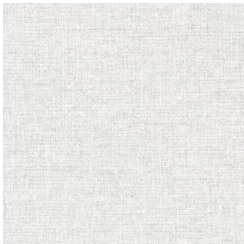
SE81-06 NETTLE



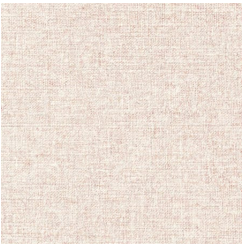
SE81-07 FLAXEN



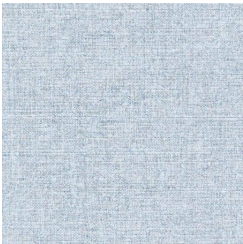
SE81-08 HOLLAND



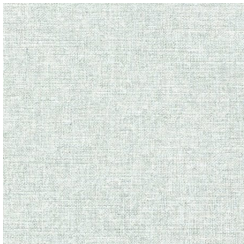
SE81-09 LINUM



SE81-10 SAFFLOWER



SE81-11 SKY



SE81-12 AGAVE



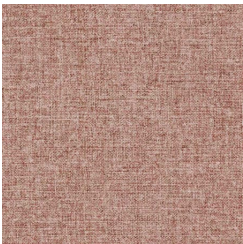
SE81-13 OATMEAL



SE81-14 CAMBRIC



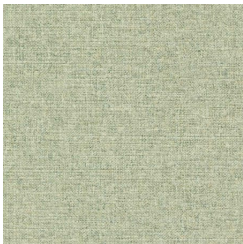
SE81-15 FLAX



SE81-16 MADDER



SE81-17 ANGORA



SE81-18 LAWN



SE81-19 JUTE



SE81-20 HEMP



SE81-21 WOOLSEY



SE81-22 MOHAIR



SE81-23 ABACA



SE81-24 CASHMERE