

SILK CASCADE

Wallcoverings » Commercial Wallcoverings



Brand: **Bolta**

Applications: **Walls**

1300 306 399

info@baresque.com.au

baresque.com.au

1 of 4

SILK CASCADE

Wallcoverings » Commercial Wallcoverings

Silk Cascade exudes luxury with cascading silk-inspired lines, metallic accents, and captivating light reflections. Available in 18 colourways.

✓ Bleach Cleanable

✓ Low VOC

✓ 10% Recycled content

✓ Non-Phthalate

✓ EPD Certified

✓ HPD Certified

Description

In the world of luxury design, where every detail speaks volumes, Bolta introduces Silk Cascade – a masterpiece of sophistication. Inspired by the gentle flow of cascading silk, Silk Cascade brings to life a harmony of glamour and finesse that captivates the senses. At its heart lies exquisite vertical line work paired with metallic elements, reflecting the beauty of flowing silk's ever-changing tapestry of colour while capturing light in the most mesmerizing ways. Silk Cascade invites you to indulge in the finer things, to embrace the beauty of design, and to let your space become a canvas of luxury.

Composition

Vinyl face on a woven backing 20oz (452 g/m²)

Environmental Info

J. Josephson is dedicated to complying with today's environmental issues and have eliminated all heavy metals such as lead, mercury, cadmium and chromium from Bolta's Wallcoverings.

- Low VOC
- 10% Recycled content
- Non-Phthalate
- EPD / HPD

Roll Size

137cm wide x 27.4m - Available by the lineal metre

Weight

452 g/m²

Fire Rating

Tested in accordance with AS ISO 9705 2003 for the purpose of determining the Group Number classification as required by the Building Code of Australia for the control of fire spread on interior wall and ceiling linings.

The result achieved was:
Classification - Group 2
Specific Extinction - Less than 250m²/kg

Lead Time

- 2-weeks (approx.) from Wednesday, subject to stock availability.
- Additional 1-week for Western Australia.
- Express delivery is available subject to a surcharge. Contact Baresque for details and pricing.

SILK CASCADE

Wallcoverings » Commercial Wallcoverings

Suggested Installation

Reverse hang / overlap and double cut.

Baresque recommends and supply Roman brand adhesives and primers.

Care Instructions

Use cloth with any of the following in preferred order of use:

1: Clear warm water

2: Mild solution of liquid detergent and warm water

3: Isopropyl Alcohol (a.k.a. rubbing alcohol)

Remove any detergent with a clean, damp cloth. Gently pat dry.

For more difficult stains, dampen a soft white cloth with a solution of household bleach (10% bleach / 90% water). Rub gently.

Rinse with a water dampened cloth to remove bleach concentration.

Do not use solvent based or concentrated abrasive cleaning agents, lacquer thinners or nail polish remover as these may cause discolouration over a period of time.

Always test in an inconspicuous area first.

If care instructions don't deliver the expected results, cease cleaning method immediately and contact Baresque for assistance.

Warranty

5-year warranty. Visit baresque.com.au/warranty for complete details.

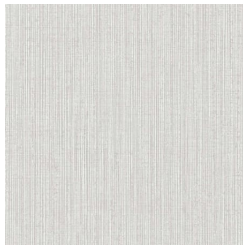
SILK CASCADE

Wallcoverings » Commercial Wallcoverings

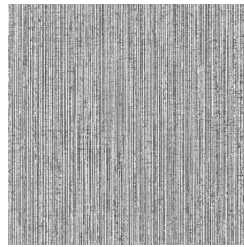
Colour & Finish Options

COLOURWAY CARD

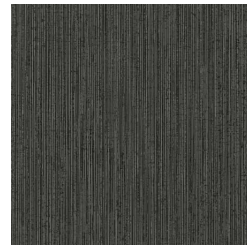
COLOURWAY CARD



BB-SD-01 RAINFALL



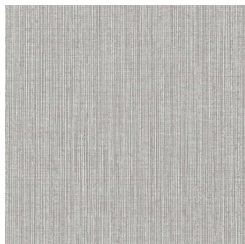
BB-SD-02 TUXEDO



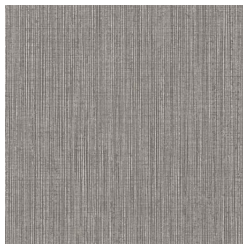
BB-SD-03 THUNDER



BB-SD-04 ICICLE



BB-SD-05 NICKLE



BB-SD-06
MOONLIGHT



BB-SD-07 DESERT



BB-SD-08 BLUFF



BB-SD-09 CANYON



BB-SD-10 SHIMMER



BB-SD-11
CHAMPAGNE



BB-SD-12 GILDED



BB-SD-13 BLOSSOM



BB-SD-14 PERSIMMON



BB-SD-15 BRONZED



BB-SD-16 CRYSTAL



BB-SD-17 SPRING



BB-SD-18 PRUSSIAN