

CS3 SIMPLON

Wallcoverings » Decorative Wallcoverings



Brand: **Omexco**

Collections: **Café Society**

Applications: **Walls**

1300 306 399

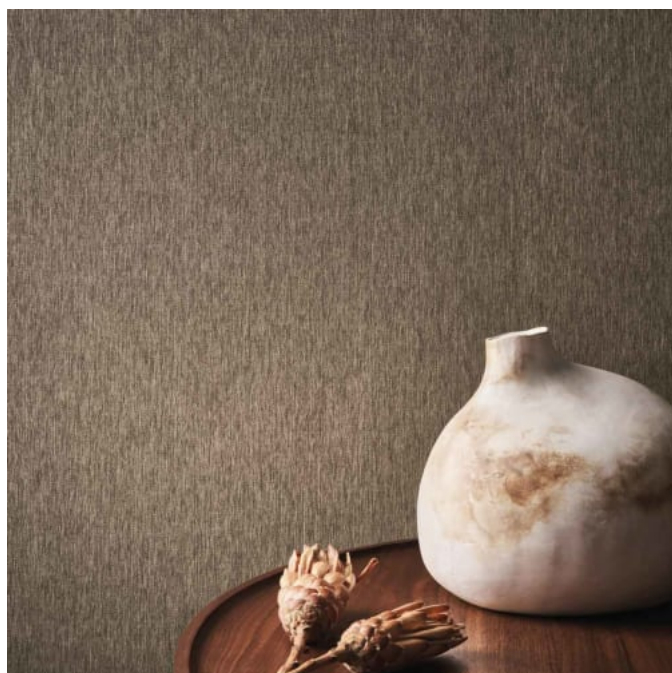
info@baresque.com.au

baresque.com.au

1 of 5

CS3 SIMPLON

Wallcoverings » Decorative Wallcoverings



CS3 SIMPLON

Wallcoverings » Decorative Wallcoverings

The embossing is clearly noticeable up close, yet fades into the background from a distance. The textile's reflection of light give it a shimmering effect. Available in six colours, including neutral tones and an intense blue and brown.

✓ **Stain Repellent**

✓ **Light Resistant**

✓ **Ecological**

✓ **Breathable**

✓ **Seamless Joins**

✓ **Printed with Solar Energy**

Description Café Society evokes the captivating spirit of a bygone era where intellectuals, artists and visionaries gathered in exclusive places to exchange ideas, engage in fiery debates and shape the cultural landscape. This collection distills the essence of this glamorous era in its exclusive designs, featuring rich, velvety weaves, luxurious chenille yarns and printed textiles.

Composition Embossed textile wallcovering

Environmental Info The Omexco brand has a sustainable policy that limits their impact on the environment on different levels.

Renewable energy is used for the production process and the company opts for non-harmful base, renewable materials such as cork or recycled sari silk and recycled fibres are used as much as possible.

Omexco has a long history of being eco-conscious trying to reduce waste by custom cutting every order and obtaining certificates for sustainable forestry.

Roll Size 90cm wide - Available by the lineal metre

Weight 250 g/m²

Fire Rating Tested in accordance with AS ISO 9705 2003 for the purpose of determining the Group Number classification as required by the Building Code of Australia for the control of fire spread on interior wall and ceiling linings.

The result achieved was:
Classification - Group 2
Specific Extinction - Less than 250m²/kg

Lead Time

- 2-weeks (approx.) from Wednesday, subject to stock availability.
- Additional 1-week for Western Australia.
- Express delivery is available subject to a surcharge. Contact Baresque for details and pricing.

CS3 SIMPLON

Wallcoverings » Decorative Wallcoverings

Suggested Installation

Non-reverse hang, Random Match.

Care Instructions

Always use a clean, white, soft cloth.

Remove liquid stains immediately using a dry cloth. Avoid hard scrubbing.

For tougher stains, dampen the cloth with warm water or a weak dilution of liquid detergent and apply being careful not to soak the material. Always work towards the centre of the stain so as to avoid further spreading.

Remove any detergent with a clean, damp cloth. Gently pat dry.

Always test in an inconspicuous area first.

Warranty

2-year warranty. Visit baresque.com.au/warranty for complete details.

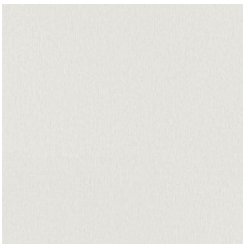
CS3 SIMPLON

Wallcoverings » Decorative Wallcoverings

Colour & Finish Options

COLOURWAY CARD

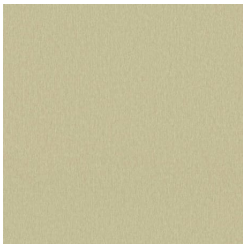
COLOURWAY CARD



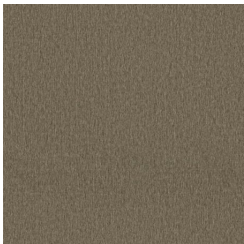
CS31



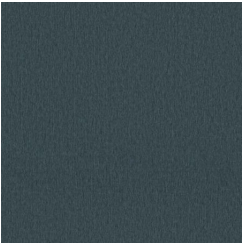
CS32



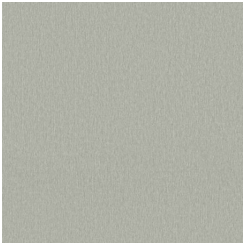
CS33



CS34



CS35



CS36