

TRAIL LINE

Wallcoverings » Advanced Wall Protection



Brand: **P3tec**

Applications: **Walls**

1300 306 399

info@baresque.com.au

baresque.com.au

1 of 4

TRAIL LINE

Wallcoverings » Advanced Wall Protection

Incorporating a dimensional, chunky, vertical, adding a new type of “staple” design to the brand. Can be railroaded for interesting horizontal effect adding extra options for installation. Versatile uses from medical office, corporate, hospitality and retail food service

- ✓ Bleach Cleanable
- ✓ Ultra Performance
- ✓ Non-Phthalate

- ✓ High Stain Resistance
- ✓ HPD Certified

- ✓ Easy Clean
- ✓ EPD Certified

Description	Introducing Trail Line, the latest staple in our P3Tec wallcovering collection featuring a dimensional, chunky vertical design that adds a bold statement to any interior. Its unique texture can be railroaded for a striking horizontal effect, offering versatility in installation. Available in rich metallic accents, contemporary neutrals, and warm, inviting beiges, Trail Line is perfect for a range of environments, from medical offices and corporate spaces to hospitality and retail food service, delivering both timeless style and robust performance.
Composition	Extra thick vinyl face on a heavy polyester / cotton knit fabric backing.
Environmental Info	HPD, EDP third-party certified Recycled content Non-phthalate
Roll Size	122cm wide x 13.7m - Available by the FULL ROLL ONLY
Abrasion	ASTM D-4060-14
Fire Rating	Tested in accordance with AS ISO 9705 2003 for the purpose of determining the Group Number classification as required by the Building Code of Australia for the control of fire spread on interior wall and ceiling linings. The result achieved was: Classification - Group 2 Specific Extinction - Less than 250m ² /kg
Lead Time	<ul style="list-style-type: none">• 2-weeks (approx.) from Wednesday, subject to stock availability.• Additional 1-week for Western Australia.• Express delivery is available subject to a surcharge. Contact Baresque for details and pricing.

TRAIL LINE

Wallcoverings » Advanced Wall Protection

Suggested Installation

Reverse hang alternate drops/overlap and double cut.

Advanced Wall Protection requires a specific installation method and we strongly recommend you use one of our recommended installers.

Download the Installation Instructions for details.

Baresque recommends and supply Roman brand adhesives and primers.

Care Instructions

1. Completion:

Immediately upon completion of installation, installer shall make sure that these products are cleaned and free of any layout marks, excess adhesive or surface blemishes. Remove excess adhesive with methods and materials recommended by the adhesive manufacturer.

2. Clean-Up and Routine Maintenance:

Rigid Profiles: For general cleaning, use disinfectant cleaner.

All Purpose Cleaner Heavy Duty: Use a clean, lint-free cloth and wipe clean. Do not use any abrasive cleaning cloths or sponges.

1. Spray products onto profile and wipe with a dampened cloth.

2. Repeat process if stain remains. If cleaning product residue remains, rinse with water.

Warranty

5-year warranty. Visit baresque.com.au/warranty for complete details.

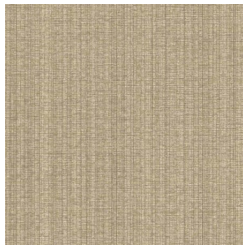
TRAIL LINE

Wallcoverings » Advanced Wall Protection

Colour & Finish Options



60445 PALE MOON



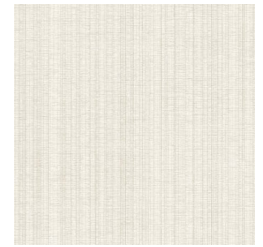
60446 TOP SOIL



60447 SANDSTONE



60448 WHITE SAND



60449 PERFECT
CREAM



60450 OPAL



60451 LIGHT YEAR



60452 CLEAR SKY



60453 ASTEROID



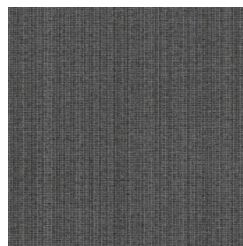
60454 GREY SHADOW



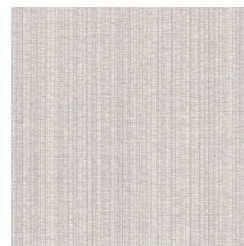
60455 NIGHT SKY



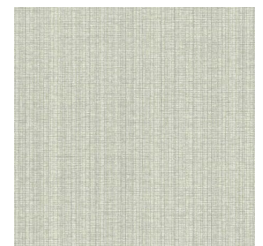
60456 BLACK HOLE



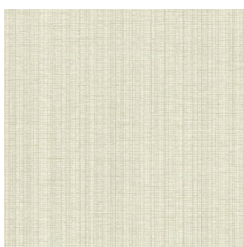
60457 BLUESHIFT



60458 LAVENDER



60459 AQUA



60460 HONEYDEW