

LUSH UNITED FABRICS

Fabrics » Woven Fabrics



Applications: **Upholstery**

LUSH UNITED FABRICS

Fabrics » Woven Fabrics



Fabrics » Woven Fabrics

✓ **Stain Resistant**

| | |
|-------------|----------------------------------------------------------------------------------------------------------------------------------------------------------------------|
| Description | Lush is a performance velvet designed to combine aesthetic appeal with practical, long-lasting qualities. It's soil and stain resistant and available in 40 colours. |
|-------------|----------------------------------------------------------------------------------------------------------------------------------------------------------------------|

Lead Time

- 2-weeks (approx.) from Wednesday, subject to stock availability.
- Additional 1-week for Western Australia.
- Express delivery is available subject to a surcharge. Contact Baresque for details and pricing.

LUSH UNITED FABRICS

Fabrics » Woven Fabrics

Care Instructions

- * Vacuum and wipe clean routinely with a microfibre cloth lightly dampened with cold water only.
- * Soak up spillages as soon as possible with an absorbent dry cloth to prevent staining.
- * If soiling has accumulated use a mild proprietary cleaner (non-alkaline). Take care to remove all soap residues and dry with a clean absorbent cloth. Then brush pile back to its natural direction.
- * Do not steam clean - heat seals its stains
- * Do not use bleach
- * Do not tumble dry
- * Do not dry clean
- * Do not fully immerse in water
- * Do not apply solvents, alcohol, or any other chemical cleaners

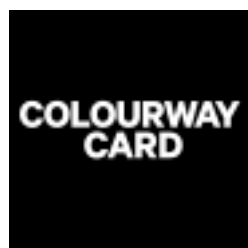
Warranty

2-year warranty. Visit baresque.com.au/warranty for complete details.

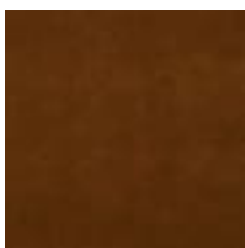
LUSH UNITED FABRICS

Fabrics » Woven Fabrics

Colour & Finish Options



COLOURWAY CARD



02 AUTUMNAL



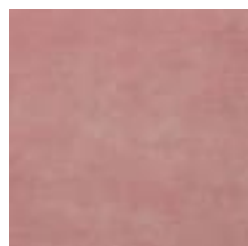
05 BLACKBERRY JAM



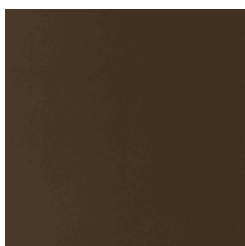
06 BORA BORA



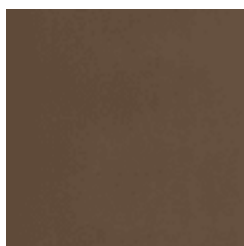
08 BLUE WHALE



10 BUBBLEGUM



14 CIGAR BOX



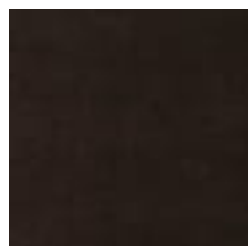
16 CREMINI



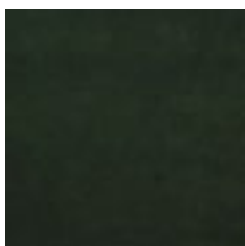
20 DEEP DIVE



22 DREAMBOAT



26 ESPRESSO



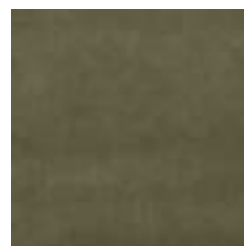
27 EVERGREEN



30 FADED
RASPBERRY



33 FORSYTHIA



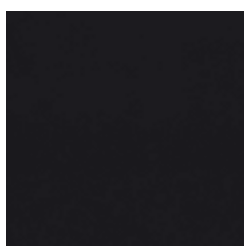
36 HERB GARDEN



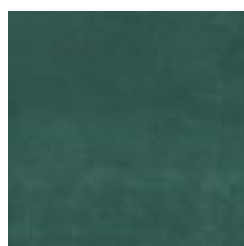
38 HOLLY BERRY



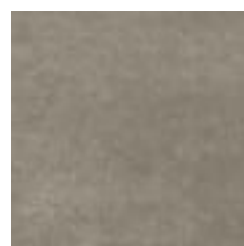
39 HONEYDEW



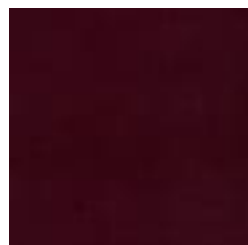
44 JET BLACK



48 MEXI CALI



50 MOONROCK



52 MULLED WINE



56 PEACH FUZZ



58 PICKLE



59 PINK LOTUS



63 POWDER

LUSH UNITED FABRICS

Fabrics » Woven Fabrics



65 PRAWN



67 RED CARPET



69 RELISH



71 RUM RAISIN



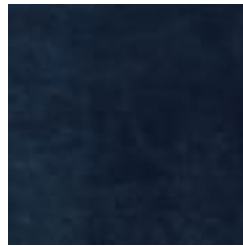
74 SAGUARO



77 SHORTBREAD



78 SOFT JADE



80 SPELLBOUND



83 STREUDEL



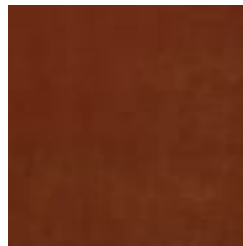
85 SWAN



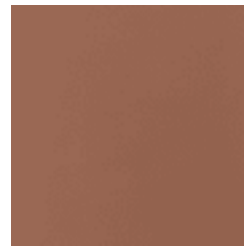
87 SWEET PEA



88 THUNDER CLOUD



90 TIGER LILY



92 TULLE



94 TRINKET



96 ULTRAMARINE