

# MILES

Fabrics » Woven Fabrics



Brand: **Sunbrella**

Applications: **Upholstery**

1300 306 399

[info@baresque.com.au](mailto:info@baresque.com.au)

[baresque.com.au](http://baresque.com.au)

1 of 5

# MILES

**Fabrics** » Woven Fabrics

---



# MILES

Fabrics » Woven Fabrics

Earth-toned fabric that defines outdoor durability

✓ Outdoor Suitable

✓ Bleach Cleanable

Description	Miles is a durable Sunbrella fabric made from tough acrylic fibers and designed for high-traffic areas like outdoor seating, commercial upholstery and marine. Miles resists fraying, pilling and fading, ensuring lasting quality. Available in 12 earth tones, Miles combines resilience with style for any environment.
Composition	100% Sunbrella Acrylic
Roll Size	137cm wide X 55m - Available by the lineal metre
Weight	481 g/m <sup>2</sup>
Abrasion	95,000 Double Rubs (ASTM D4157)
Fire Rating	Tested in accordance with AS1530.3 Spread of Flame Index - 0 Smoke Developed Index - 5
Lead Time	<ul style="list-style-type: none"><li>• 2-weeks (approx.) from Wednesday, subject to stock availability.</li><li>• Additional 1-week for Western Australia.</li><li>• Express delivery is available subject to a surcharge. Contact Baresque for details and pricing.</li></ul>

# MILES

Fabrics » Woven Fabrics

---

## Care Instructions

One of the best ways to keep fabrics looking good is to brush off dirt before it becomes embedded in the fabrics and wipe up spills or clean soon after a stain occurs. The quicker you clean spills and stains, the easier they can be to remove.

Avoid scrubbing or any other abrasive cleaning method. Never use stiff bristles or wire brushes, as they may damage the fabric.

Wipe material with a clean, soft cloth dampened with a mild solution of liquid detergent and warm water.

Repeat using only clean water, then dry with a lint free cloth or air dry.

Avoid using wax polishes, solvents or concentrated abrasives.

For more difficult stains, dampen a soft white cloth with a solution of household bleach (10% bleach / 90% water). Rub gently. Rinse with a water dampened cloth to remove bleach concentration.

Always test in an inconspicuous area first.

If care instructions don't deliver the expected results, cease cleaning method immediately and contact Baresque for assistance.

---

## Warranty

2-year warranty. Visit [baresque.com.au/warranty](https://baresque.com.au/warranty) for complete details.

---



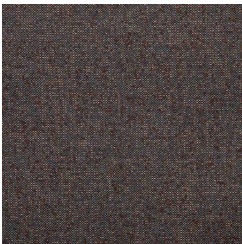
# MILES

Fabrics » Woven Fabrics

## Colour & Finish Options



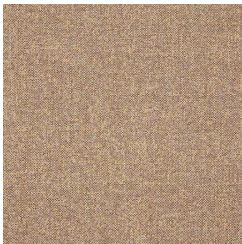
COLOURWAY CARD



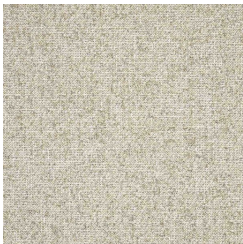
63 MIRAGE



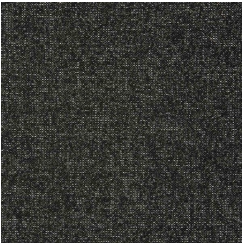
81 SABLE



92 TERRAZZO



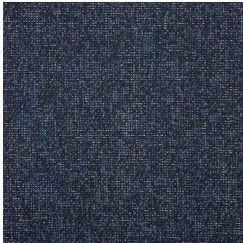
44 MACRAME



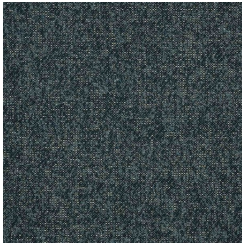
86 STARDUST



97 WATERCOLOR



38 GALAXY



06 ABALONE



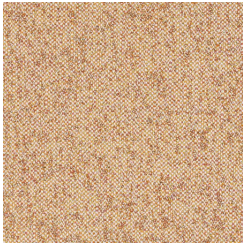
29 EMERALD CITY



31 ENCHANTED



99 WATERLILY



94 TIGERLILY



09 APOTHECARY