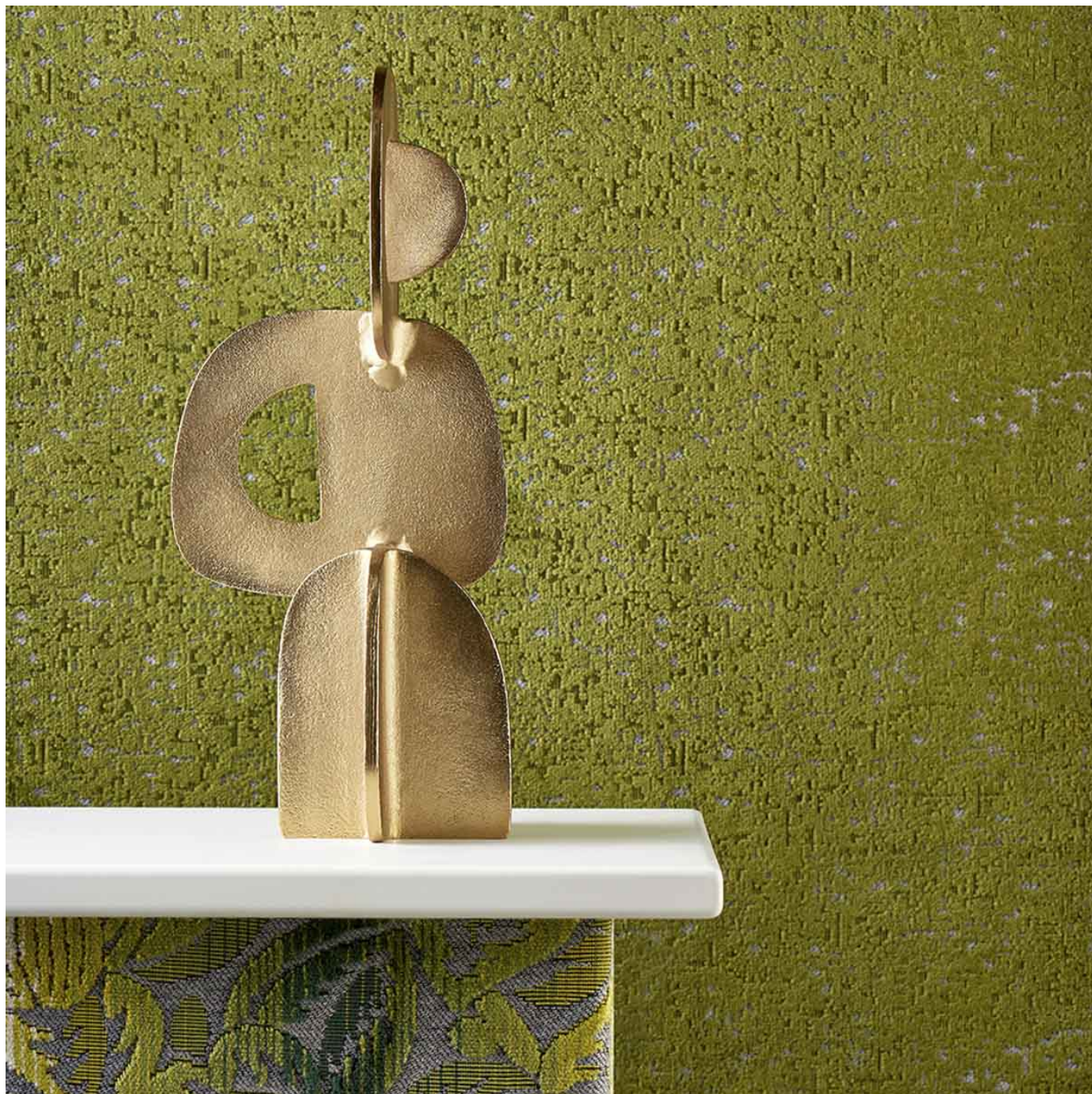


# OPERA PARISIENNE

Fabrics » Woven Fabrics



Brand: **Panaz**

Collections: **Parisienne**

Applications: **Upholstery**

1300 306 399

[info@baresque.com.au](mailto:info@baresque.com.au)

[baresque.com.au](http://baresque.com.au)

1 of 5

# OPERA PARISIENNE

**Fabrics** » Woven Fabrics

---



# OPERA PARISIENNE

Fabrics » Woven Fabrics

Opera is part of the Parisienne Collection featuring a beautiful textures velvet that's available in 10 colourways.

Description	The Parisienne jacquard velvet collection features designs inspired by floral, geometric and textural decorative patterns seen in the Art Deco era, the velvets varying surface texture reminds us of cast metal panels, moulded ceramics and angular architectural details in colours that are rich and sophisticated, synonymous with interiors of that time.
Composition	Viscose, Cotton and Polyester
Pattern Repeat Size	Not Applicable
Roll Size	138cm x N/A - Available by the lineal metre. MINIMUM ORDER 5 METRES
Abrasion	50,000 rubs (Wyzenbeek)
Fire Rating	This product can be treated with a fire retardant that will ensure it meets Australian Standard 1530.3. Contact Baresque for details.
Lead Time	<ul style="list-style-type: none"><li>• 2-weeks (approx.) from Wednesday, subject to stock availability.</li><li>• Additional 1-week for Western Australia.</li><li>• Express delivery is available subject to a surcharge. Contact Baresque for details and pricing.</li></ul>
Care Instructions	<ul style="list-style-type: none"><li>* Vacuum and wipe clean routinely with a microfibre cloth lightly dampened with cold water only.</li><li>* Soak up spillages as soon as possible with an absorbent dry cloth to prevent staining.</li><li>* If soiling has accumulated use a mild proprietary cleaner (non-alkaline). Take care to remove all soap residues and dry with a clean absorbent cloth. Then brush pile back to its natural direction.</li><li>* Do not steam clean - heat seals its stains</li><li>* Do not use bleach</li><li>* Do not tumble dry</li><li>* Do not dry clean</li><li>* Do not fully immerse in water</li><li>* Do not apply solvents, alcohol, or any other chemical cleaners</li></ul>

# OPERA PARISIENNE

**Fabrics** » Woven Fabrics

---

## Warranty

2-year warranty. Visit [baresque.com.au/warranty](https://baresque.com.au/warranty) for complete details.

---



# OPERA PARISIENNE

Fabrics » Woven Fabrics

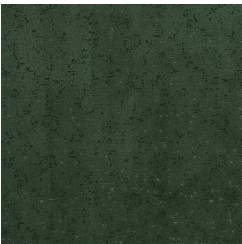
## Colour & Finish Options

### COLOURWAY CARD

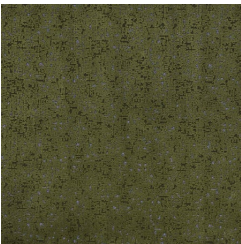
OPERA COLOURWAY  
CARD



105 INDIGO



211 SPRUCE



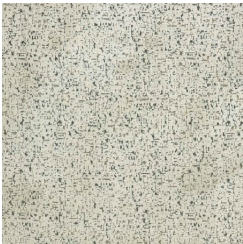
231 OLIVE



436 PAPRIKA



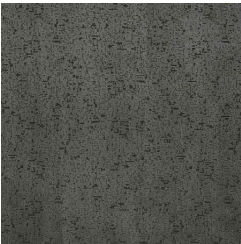
619 ROSEWOOD



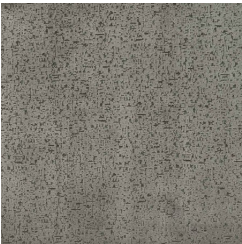
805 CREAM



823 CHABLIS



904 PEWTER



905 DOVE



919 ZINC