

ARCHER

Fabrics » Woven Fabrics



Brand: **CF Stinson**

Applications: **Upholstery**

1300 306 399

info@baresque.com.au

baresque.com.au

1 of 5

ARCHER

Fabrics » Woven Fabrics



ARCHER

Fabrics » Woven Fabrics

Archer is a durable, bleach-cleanable woven Crypton fabric in 23 colorways, stain-resistant, and perfect for high-traffic spaces, combining style and performance.

✓ **Bleach Cleanable**

✓ **Anti-Microbial**

✓ **Fluid Barrier**

✓ **Enhanced soil + stain resistance**

✓ **Greenguard Gold Certified**

Description

Archer is a versatile woven Crypton fabric available in 23 beautiful colourways, offering both style and performance.

Engineered for durability, it exceeds 100,000 double rubs, making it perfect for high-traffic environments.

Archer is bleach-cleanable and stain-resistant, ensuring easy maintenance and long-lasting appeal. Ideal for commercial settings, it combines practicality with a sophisticated aesthetic.

Composition

100% Polyester with Crypton Integrated Fluid Barrier

Environmental Info

Greenguard Certifications contributes towards LEED credits for low-emitting furniture and ensures compliance with Business and Institutional Furniture Manufacturers Association (BIFMA) X7.1 standard and BIFMA e3 credit 7.6.1.

Greenguard Gold Certification standard includes:

* Health-based criteria for additional chemicals and requires lower total VOC emissions levels to help ensure that products are acceptable for use in environments like schools and healthcare facilities.

* Products that also comply with requirements of the state of California's Department of Public Health (CDPH) "Standard Method for the Test and Evaluation of Volatile Organic Chemical Emissions from Indoor Sources Using Environmental Chambers, Version 1.2 (2017)" (also known as California Section 01350).

* Products that are compliant with the BIFMA X7.1 standard and BIFMA e3 credits 7.6.1, 7.6.2, and 7.6.3.

Pattern Repeat Size

Not Applicable

Roll Size

137cm x 50m - Available by the lineal metre.

Abrasion

100,000 double rubs

ARCHER

Fabrics » Woven Fabrics

Fire Rating

Tested in accordance with AS1530.3

Spread of Flame Index - 0

Smoke Developed Index - 5

Lead Time

- 2-weeks (approx.) from Wednesday, subject to stock availability.
 - Additional 1-week for Western Australia.
 - Express delivery is available subject to a surcharge. Contact Baresque for details and pricing.
-

Care Instructions

Mix 5 parts water with 1 part of an enzyme laundry detergent to have a mixture that works well on all stains.

Most liquid spills simply blot off the surface with a dry towel. If a stain remains, follow these simple steps:

1. Remove excess soil, and apply the soap mixture on the stained area
2. Allow solution to remain on stain for 1 minute
3. Blot up the stain with a dry, clean towel, rinse any remaining soap and blot the area again

Repeat these steps if a spot still remains. If agitation is necessary, spray the stained area and work the stain using a soft brush or edge of spoon from outside of spot toward the middle. Blot and rinse to remove any soap.

Warranty

2-year warranty. Visit baresque.com.au/warranty for complete details.

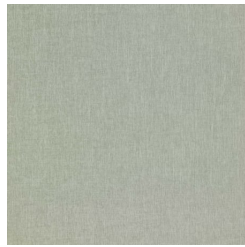
ARCHER

Fabrics » Woven Fabrics

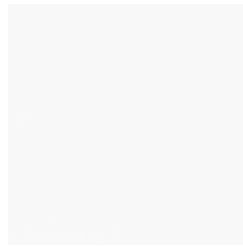
Colour & Finish Options

COLOURWAY CARD

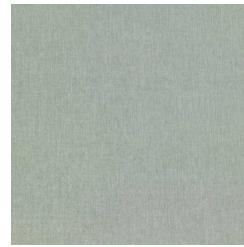
ARCHER COLOURWAY
CARD



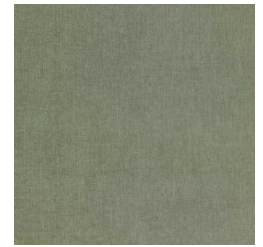
66745 ALOE



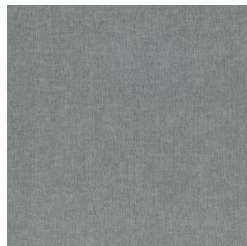
66746 ARTIC



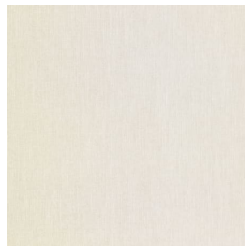
66747 SPEARMINT



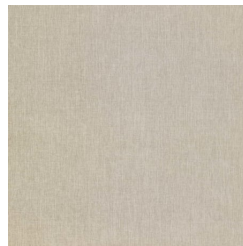
66748 LEAF



66749 ICE



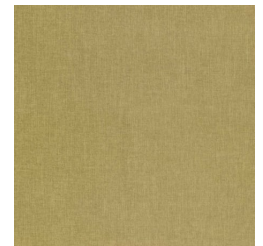
66750 BISCOTTI



66751 KOALA



66752 DOVE



66753 FERN



66754 SEASIDE



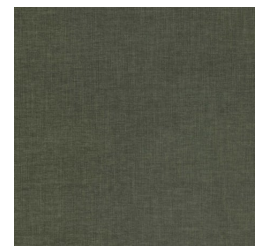
66755 CORNSILK



66756 CRANBERRY



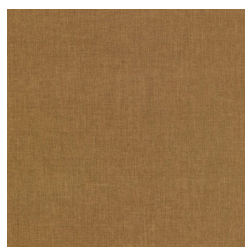
66757 ARROW



66758 WOODLAND



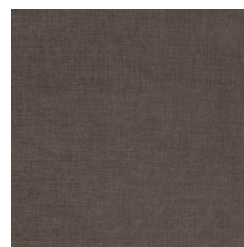
66759 RIPTIDE



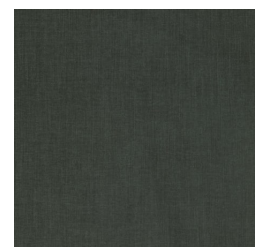
66760 AMBER



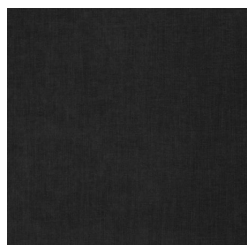
66761 PENNY



66762 AIM



66763 EMERALD



66764 KNIGHT