

# SONATA SKYLINE

Wallcoverings » Commercial Wallcoverings

---



Brand: **Koroseal**

Collections: **Stacy Garcia New York**

Applications: **Walls**

1300 306 399

[info@baresque.com.au](mailto:info@baresque.com.au)

[baresque.com.au](http://baresque.com.au)

1 of 5

# SONATA SKYLINE

Wallcoverings » Commercial Wallcoverings



# SONATA SKYLINE

Wallcoverings » Commercial Wallcoverings

Sonata Skyline’s textured mid-scale motif and metallic stripe evoke NYC’s jazz clubs, blending retro charm with modern neutrals, blues, greens, and golden yellows.

- ✓ Mildew Resistant
- ✓ Low VOC

**Description**

Sonata Skyline captures the vibrant essence of New York City's piano bars and jazz clubs.

This modern retro pattern showcases a textured mid-scale motif and a metallic vertical stripe that ties together its nostalgic appeal.

The embossing accentuates the texture beautifully, making it an excellent choice for hospitality projects.

With mid-century modern vibes, this design offers a fresh take on a vintage palette, featuring essential neutrals and muted shades of blue, green, and golden yellow.

**Composition**

Vinyl face on a non-woven backing

**Environmental Info**

Formaldehyde free

Heavy metals free

Perfluorooctanoic acid free

No solvent inks

Low VOC emissions. Any VOCs dissipate quickly (faster than paint) through normal ventilation and have no recognized adverse impact on indoor air quality.

Durability means products do not need to be replaced regularly due to wear and tear and being cleanable, vinyl products are ideal for helping keep commercial environments clean of bacteria.

Baresque will only deal with vinyl manufacturers that comply with applicable state and federal regulations, provide a factory that is safe and clean for its employees to work in, recycle scrap and inks during the manufacturing process to minimize waste related to production.

**Pattern Repeat Size**

61cm V

**Roll Size**

132/137cm x 27.4m - Available by the lineal metre.

# SONATA SKYLINE

Wallcoverings » Commercial Wallcoverings

---

Fire Rating	<p>Tested in accordance with AS ISO 9705 2003 for the purpose of determining the Group Number classification as required by the Building Code of Australia for the control of fire spread on interior wall and ceiling linings.</p> <p>The result achieved was: Classification - Group 2 Specific Extinction - Less than 250m<sup>2</sup>/kg</p>
Lead Time	<ul style="list-style-type: none"><li>• 2-weeks (approx.) from Wednesday, subject to stock availability.</li><li>• Additional 1-week for Western Australia.</li><li>• Express delivery is available subject to a surcharge. Contact Baresque for details and pricing.</li></ul>
Suggested Installation	<p>Reverse hang / Straight across match.</p> <p>Baresque recommends and supplies Roman brand adhesives and primers.</p>
Care Instructions	<p>Use cloth with any of the following in preferred order of use:</p> <ol style="list-style-type: none"><li>1: Clear warm water</li><li>2: Mild solution of liquid detergent and warm water</li><li>3: Isopropyl Alcohol (a.k.a. rubbing alcohol)</li></ol> <p>Remove any detergent with a clean, damp cloth. Gently pat dry.</p> <p>For more difficult stains, dampen a soft white cloth with a solution of household bleach (10% bleach / 90% water). Rub gently.</p> <p>Rinse with a water dampened cloth to remove bleach concentration.</p> <p>Do not use solvent based or concentrated abrasive cleaning agents, lacquer thinners or nail polish remover as these may cause discolouration over a period of time.</p> <p>Always test in an inconspicuous area first.</p> <p>If care instructions don't deliver the expected results, cease cleaning method immediately and contact Baresque for assistance.</p>
Warranty	<p>5-year warranty. Visit <a href="https://baresque.com.au/warranty">baresque.com.au/warranty</a> for complete details.</p>

---

# SONATA SKYLINE

Wallcoverings » Commercial Wallcoverings

## Colour & Finish Options

### COLOURWAY CARD

SONATA SKYLINE  
TIPCARD



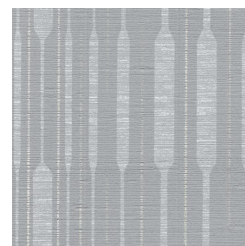
SG27-01-OYSTER



SG27-02 DOVE



SG27-03 MOONLIGHT



SG27-04 SLATE



SG27-05 BASIL



SG27-06 WHEAT



SG27-07 TRUFFLE