

PALLAS

Wallcoverings » Commercial Wallcoverings



Brand: **Versa**

Applications: **Walls**

PALLAS

Wallcoverings » Commercial Wallcoverings



PALLAS

Wallcoverings » Commercial Wallcoverings

Pallas is a realistic plaster texture with organic tones, evoking stone and clay. Its 8 neutral hues are nature-inspired, featuring a luminous, mineral finish.

- ✓ Bleach Cleanable
- ✓ EPD Certified
- ✓ Low VOC
- ✓ HPD Certified

Description	<p>Pallas is a dimensional plaster rendered in crisp detail for a realistic finish on the wall.</p> <p>With traces of saturated character tones, this organic texture is reminiscent of stone, clay, and other natural elements. The 8-sku neutral palette is nature-inspired with a luminous minerality.</p>
Composition	Vinyl face on a woven backing 20oz (452 g/m²)
Environmental Info	<p>Formaldehyde free</p> <p>Heavy metals free</p> <p>Perfluorooctanoic acid free</p> <p>No solvent inks</p> <p>Low VOC emissions. Any VOCs dissipate quickly (faster than paint) through normal ventilation and have no recognized adverse impact on indoor air quality.</p> <p>Durability means products do not need to be replaced regularly due to wear and tear and being cleanable, vinyl products are ideal for helping keep commercial environments clean of bacteria.</p> <p>Baresque will only deal with vinyl manufacturers that comply with applicable state and federal regulations, provide a factory that is safe and clean for its employees to work in, recycle scrap and inks during the manufacturing process to minimize waste related to production.</p>
Pattern Repeat Size	Not Applicable
Roll Size	132/137cm x 27.4m - Available by the lineal metre.
Weight	452 g/m²
Fire Rating	<p>Tested in accordance with AS ISO 9705 2003 for the purpose of determining the Group Number classification as required by the Building Code of Australia for the control of fire spread on interior wall and ceiling linings.</p> <p>Classification - Group 3</p> <p>Specific Extinction - Less than 250m²/kg</p>

PALLAS

Wallcoverings » Commercial Wallcoverings

Lead Time

- 2-weeks (approx.) from Wednesday, subject to stock availability.
 - Additional 1-week for Western Australia.
 - Express delivery is available subject to a surcharge. Contact Baresque for details and pricing.
-

Suggested Installation

Reverse hang / overlap and double cut.
Baresque recommends and supply Roman brand adhesives and primers.

Care Instructions

Use cloth with any of the following in preferred order of use:

- 1: Clear warm water
- 2: Mild solution of liquid detergent and warm water
- 3: Isopropyl Alcohol (a.k.a. rubbing alcohol)

Remove any detergent with a clean, damp cloth. Gently pat dry.

For more difficult stains, dampen a soft white cloth with a solution of household bleach (10% bleach / 90% water). Rub gently.

Rinse with a water dampened cloth to remove bleach concentration.

Do not use solvent based or concentrated abrasive cleaning agents, lacquer thinners or nail polish remover as these may cause discolouration over a period of time.

Always test in an inconspicuous area first.

If care instructions don't deliver the expected results, cease cleaning method immediately and contact Baresque for assistance.

Warranty

5-year warranty. Visit baresque.com.au/warranty for complete details.

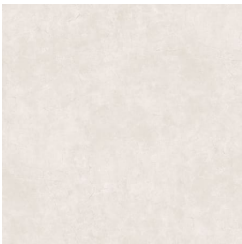
PALLAS

Wallcoverings » Commercial Wallcoverings

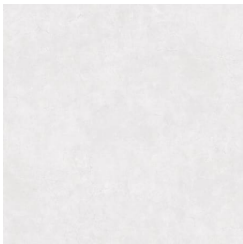
Colour & Finish Options

COLOURWAY CARD

PALLAS TIPCARD



AVF27-031
CHALKDUST



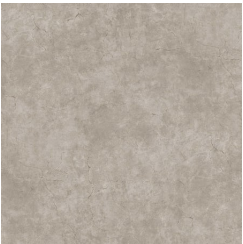
AVF27-046 QUARTZ



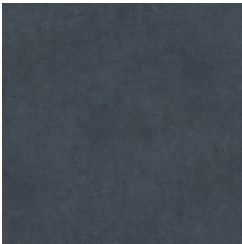
AVF27-128 SAND
DUNE



AVF27-148 CAIRN



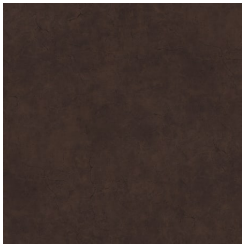
AVF27-179 SEDIMENT



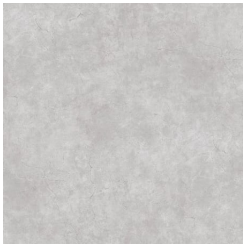
AVF27-333 SARGASSO
SEA



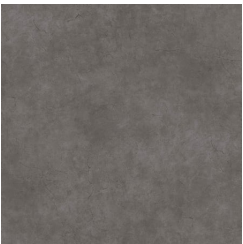
AVF27-405 KILN



AVF27-681 LOOM



AVF27-812
WHEATSTONE



AVF27-850 FORGE



AVF27-867 RIVERWAY



AVF27-893 MIDNIGHT