

# ASCOLI

Wallcoverings » Commercial Wallcoverings



Brand: **Versa**

Applications: **Walls**

1300 306 399

[info@baresque.com.au](mailto:info@baresque.com.au)

[baresque.com.au](http://baresque.com.au)

1 of 5

# ASCOLI

Wallcoverings » Commercial Wallcoverings

---



# ASCOLI

Wallcoverings » Commercial Wallcoverings

Ascoli is a luminous rectilinear pattern with metallic flecks in 8 shades, from pearl white to rich gem tones, adding elegance to any space.

- ✓ Bleach Cleanable
- ✓ EPD Certified
- ✓ Low VOC
- ✓ HPD Certified

Description	Ascoli is a luminous rectilinear pattern with gleaming flecks of colour and metallic. Inspired by the namesake Italian city's reflective stone architecture and windows of light, this design lends the perfect touch of elegance to your space. The 8-sku palette features shades ranging from sun-lit pearl white to medium/deep gem tones such as moon-beaming blue.
Composition	Vinyl face on a woven backing 20oz (452 g/m²)
Environmental Info	<p>Formaldehyde free</p> <p>Heavy metals free</p> <p>Perfluorooctanoic acid free</p> <p>No solvent inks</p> <p>Low VOC emissions. Any VOCs dissipate quickly (faster than paint) through normal ventilation and have no recognized adverse impact on indoor air quality.</p> <p>Durability means products do not need to be replaced regularly due to wear and tear and being cleanable, vinyl products are ideal for helping keep commercial environments clean of bacteria.</p> <p>Baresque will only deal with vinyl manufacturers that comply with applicable state and federal regulations, provide a factory that is safe and clean for its employees to work in, recycle scrap and inks during the manufacturing process to minimize waste related to production.</p>
Pattern Repeat Size	Not Applicable
Roll Size	132/137cm x 27.4m - Available by the lineal metre.
Weight	452 g/m²
Fire Rating	<p>Tested in accordance with AS ISO 9705 2003 for the purpose of determining the Group Number classification as required by the Building Code of Australia for the control of fire spread on interior wall and ceiling linings.</p> <p>The result achieved was: Classification - Group 2 Specific Extinction - Less than 250m²/kg</p>

Lead Time	<ul style="list-style-type: none"><li>• 2-weeks (approx.) from Wednesday, subject to stock availability.</li><li>• Additional 1-week for Western Australia.</li><li>• Express delivery is available subject to a surcharge. Contact Baresque for details and pricing.</li></ul>
-----------	---

---

Suggested Installation	<p>Reverse hang / overlap and double cut.</p> <p>Baresque recommends and supply Roman brand adhesives and primers.</p>
------------------------	--

---

Care Instructions	<p>Use cloth with any of the following in preferred order of use:</p> <ol style="list-style-type: none"><li>1: Clear warm water</li><li>2: Mild solution of liquid detergent and warm water</li><li>3: Isopropyl Alcohol (a.k.a. rubbing alcohol)</li></ol> <p>Remove any detergent with a clean, damp cloth. Gently pat dry.</p> <p>For more difficult stains, dampen a soft white cloth with a solution of household bleach (10% bleach / 90% water). Rub gently.</p> <p>Rinse with a water dampened cloth to remove bleach concentration.</p> <p>Do not use solvent based or concentrated abrasive cleaning agents, lacquer thinners or nail polish remover as these may cause discolouration over a period of time.</p> <p>Always test in an inconspicuous area first.</p> <p>If care instructions don't deliver the expected results, cease cleaning method immediately and contact Baresque for assistance.</p>
-------------------	---

---

Warranty	5-year warranty. Visit <a href="https://baresque.com.au/warranty">baresque.com.au/warranty</a> for complete details.
----------	--

---



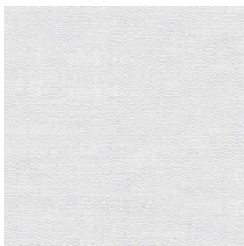
# ASCOLI

Wallcoverings » Commercial Wallcoverings

## Colour & Finish Options

### COLOURWAY CARD

ASCOLI COLOURWAY  
CARD



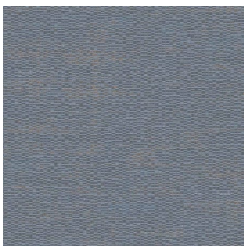
A216-059 AKOYA



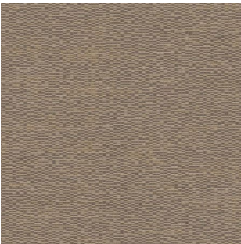
A216-062 MORGANITE



A216-185 OPAL



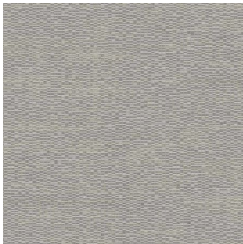
A216-325 TOPAZ



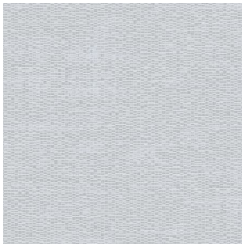
A216-644 COPPER



A216-710 AURUM



A216-803 LICHEN



A216-871 FLOURITE