

ALAMEDA

Wallcoverings » Commercial Wallcoverings



Brand: **Versa**

Applications: **Walls**

1300 306 399

info@baresque.com.au

baresque.com.au

1 of 5

ALAMEDA

Wallcoverings » Commercial Wallcoverings



ALAMEDA

Wallcoverings » Commercial Wallcoverings

Alameda is a playful, geometric design with a soft, woven texture in 12 neutral hues, including rich colours and tranquil blue for modern spaces.

✓ Bleach Cleanable

✓ EPD Certified

✓ Low VOC

✓ HPD Certified

Description	Inspired by mid-century graphic design, Alameda is a playful, multi-level geometric. The distressed motif and woven print foster a sense of textile softness that provides a versatile pattern for transitional and contemporary spaces. Alameda offers 12 SKUs with an emphasis on clean and contemporary neutral hues including rich colorways and a tranquil blue.
Composition	Vinyl face on a woven backing 20oz (452 g/m ²)
Environmental Info	<p>Formaldehyde free</p> <p>Heavy metals free</p> <p>Perfluorooctanoic acid free</p> <p>No solvent inks</p> <p>Low VOC emissions. Any VOCs dissipate quickly (faster than paint) through normal ventilation and have no recognized adverse impact on indoor air quality.</p> <p>Durability means products do not need to be replaced regularly due to wear and tear and being cleanable, vinyl products are ideal for helping keep commercial environments clean of bacteria.</p> <p>Baresque will only deal with vinyl manufacturers that comply with applicable state and federal regulations, provide a factory that is safe and clean for its employees to work in, recycle scrap and inks during the manufacturing process to minimize waste related to production.</p>
Pattern Repeat Size	63.5cm V / 66cm H
Roll Size	132/137cm x 27.4m - Available by the lineal metre.
Weight	452 g/m ²
Fire Rating	<p>Tested in accordance with AS ISO 9705 2003 for the purpose of determining the Group Number classification as required by the Building Code of Australia for the control of fire spread on interior wall and ceiling linings.</p> <p>The result achieved was: Classification - Group 2 Specific Extinction - Less than 250m²/kg</p>

ALAMEDA

Wallcoverings » Commercial Wallcoverings

Lead Time	<ul style="list-style-type: none">• 2-weeks (approx.) from Wednesday, subject to stock availability.• Additional 1-week for Western Australia.• Express delivery is available subject to a surcharge. Contact Baresque for details and pricing.
-----------	---

Suggested Installation	<p>Align at arrows.</p> <p>Non-reverse hang/overlap and double cut.</p> <p>Baresque recommends and supplies Roman brand adhesives and primers.</p>
------------------------	--

Care Instructions	<p>Use cloth with any of the following in preferred order of use:</p> <ol style="list-style-type: none">1: Clear warm water2: Mild solution of liquid detergent and warm water3: Isopropyl Alcohol (a.k.a. rubbing alcohol) <p>Remove any detergent with a clean, damp cloth. Gently pat dry.</p> <p>For more difficult stains, dampen a soft white cloth with a solution of household bleach (10% bleach / 90% water). Rub gently.</p> <p>Rinse with a water dampened cloth to remove bleach concentration.</p> <p>Do not use solvent based or concentrated abrasive cleaning agents, lacquer thinners or nail polish remover as these may cause discolouration over a period of time.</p> <p>Always test in an inconspicuous area first.</p> <p>If care instructions don't deliver the expected results, cease cleaning method immediately and contact Baresque for assistance.</p>
-------------------	---

Warranty	5-year warranty. Visit baresque.com.au/warranty for complete details.
----------	--

ALAMEDA

Wallcoverings » Commercial Wallcoverings

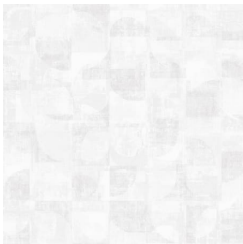
Colour & Finish Options

COLOURWAY CARD

ALAMEDA
COLOURWAY CARD



A214-074 GLIMPSE



A214-095 SWAN



A214-187 ALMOND



A214-196 SNUG



A214-318 NIGHTFALL



A214-326 STONE
WASH



A214-380 HIDEAWAY



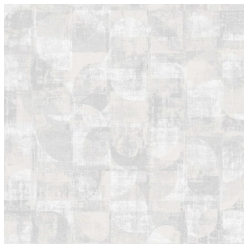
A214-442 RUST



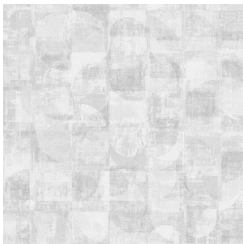
A214-605 TIMBER



A214-629 SABLE



A214-841 WISHBONE



A214-863 BEDROCK