

# BAFFLE SYSTEMS QUARTER

Acoustics » Acoustic Baffles



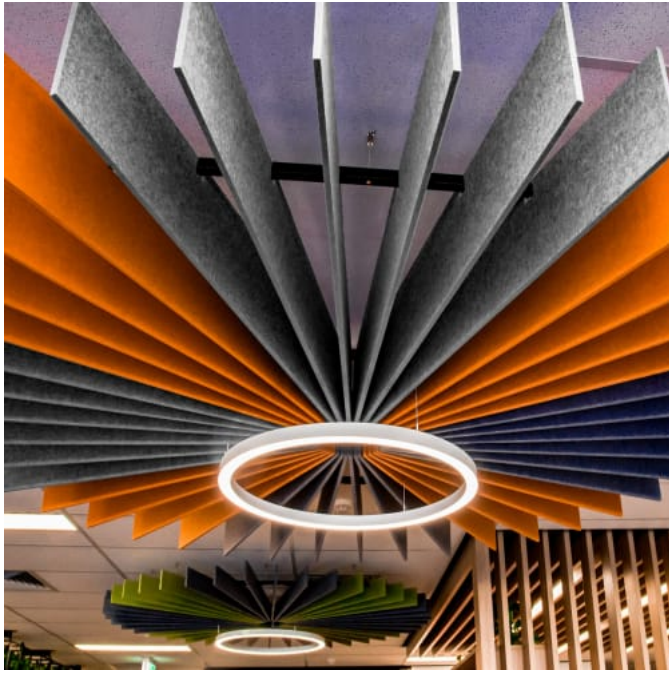
Brand: **Zintra**

Collections: **Baffle Systems**

Applications: **Ceilings**

# BAFFLE SYSTEMS QUARTER

Acoustics » Acoustic Baffles



Baffle Systems Quarter Detail



Baffle Systems Quarter Circle

# BAFFLE SYSTEMS QUARTER

Acoustics » Acoustic Baffles

Transform your space with Zintra Baffle System, Quarter design. Our high-performing baffles offer flexible and dynamic acoustic control, perfect for enhancing spacious environments

✓ Acoustic

✓ Bleach Cleanable

✓ Easy Clean

✓ Easy Install

## Description

A modern solution for acoustic control, Zintra Baffles are a prefabricated, ceiling mounted system. Showcasing Zintra's flexible characteristics and offering superior acoustic control, Zintra Acoustic Baffles are an innovative replacement to traditional mineral fibre lay systems.

By exposing the ceiling, Zintra baffles create an open and airy atmosphere while efficiently mitigating noise levels.

### Quarter

A 90 degree fan design, which can be used side by side or put 4 together to make a large circle.

Easy to assemble, easy to install and available in a large array of designs, baffles are ideally suited to large noisy spaces in educational institutions, shopping centres, restaurants, and airports.

### Available in 10 designs

Bolt | Canyon | Gorge | Individual | Louvre | Ridge | Square | Swell | V-Fold | Wave

Combining a dynamic aesthetic appeal and acoustic performance these systems are supplied ready to install with minimum fuss. A great advantage of the vertical blades is the increased surface area that is presented to the room resulting in a greater absorption of sound compared to flat panels.

Zintra Baffles present a modern and budget-friendly solution for cultivating a tranquil and efficient workspace.

Choose from one of our 12 vibrant powdercoat colors (additional charge)

## How to Specify

1. Select Design
2. Select Size
3. Select Zintra Colour

## Composition

Zintra Acoustic Panel - 100% Solution Dyed (Colour Through) Polyester

12mm (1/2") - Density 2.4 kg /m<sup>2</sup> 0.5 lb/ft<sup>2</sup>

# BAFFLE SYSTEMS QUARTER

Acoustics » Acoustic Baffles

---

## Sustainability

Zintra is made from 100% recyclable materials.

- 60% post-consumer recycled content from PET bottles.
  - 35% pre-consumer recycled content from PET chips
  - 5% polylactic acid (PLA)
- 

## Dimensions

Length of individual baffles – 1300mm (51.18")

**Quarter Baffle:** 1324mm (52.1") w x 1827mm (72") d x 110mm (4.3") h

**Full Circle:** 2800mm (108") w x 2800mm (108") d x 110mm (4.3")

For overall measurements please refer to installation guide.

---

## Fire Rating

ASTM-E84 – Class A classification  
AS ISO 9705 – 2003 – Group 1 classification  
EN-13501 – B-s2-d0 classification

---

## Supplied As

### Quarter: 10 Blades

- Depending on size:
  - 4 or 6 Adjustable Suspension Kit (ASK) | 2 or 3 x Aluminium Tube with Notches | 4 or 6 x Aluminium End Caps | 2 or 3 x 124mm (1") Zintra Connectors
- 

## Assembly & Delivery

Ships Flat Packed.

Assemble your Baffle System then suspend from the ceiling using hanging hardware supplied.

Go to the Technical Documents and download the Installation Guide for more details.

---

## Suggested Installation

Go to Technical Documents and download the Installation Guide for more details.

---

# BAFFLE SYSTEMS QUARTER

Acoustics » Acoustic Baffles

---

## Care Instructions

Vacuum to remove dust.

Dab Zintra with a damp clean cloth and mild solution of liquid detergent and warm water. Repeat using only clean water, then pat dry with a lint free cloth.

For difficult stains, use a solution of household bleach (10% bleach / 90% water). To remove the bleach, repeat using a clean, water dampened cloth, then pat dry.

Always test in an inconspicuous area first and if you don't see the expected results, contact us.

---

## Warranty

Visit FAQ for more details.

---

## Customisable

Zintra Acoustic Panel - 100% Solution Dyed (Colour Through) Polyester

12mm (1/2") - Density 2.4 kg /m<sup>2</sup> 0.5 lb/ft<sup>2</sup>

---

## Additional Comments

NRC Rating

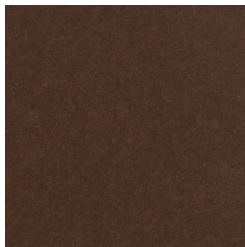
- Without Air Gap: Up to 0.95
  - With 24" (610mm) Air Gap: Up to 1.00
-

# BAFFLE SYSTEMS QUARTER

Acoustics » Acoustic Baffles

## Colour & Finish Options

Zintra 12mm Solid PET



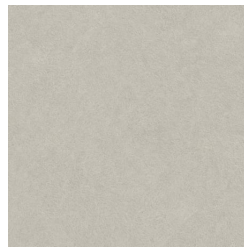
Bark



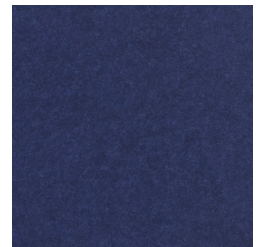
Brick



Cadet



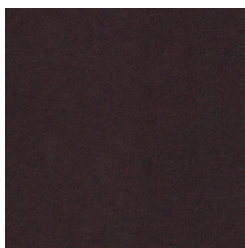
Chambray



Cobalt



Ecru



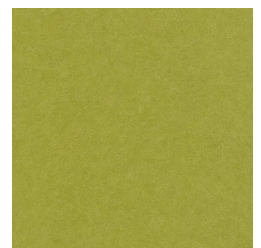
Elderberry



Fossil



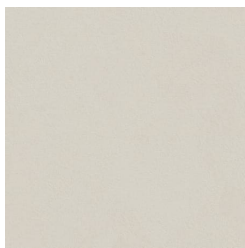
Frost



Grass



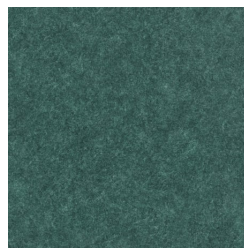
Greige



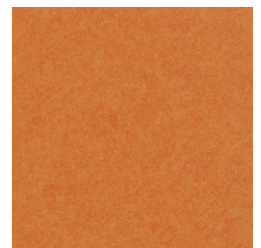
Ivory



Linen



Malachite



Mandarin



Meadow



Midnight



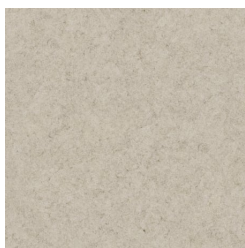
Ochre



Olive



Parchment



Pebble



Pewter



Saffron



Sky



Smoke

# BAFFLE SYSTEMS QUARTER

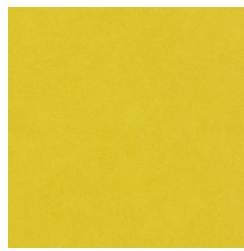
Acoustics » Acoustic Baffles



Slate



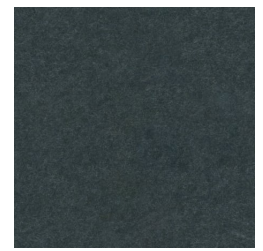
Storm



Sunshine



Tar

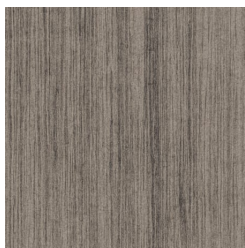


Twilight

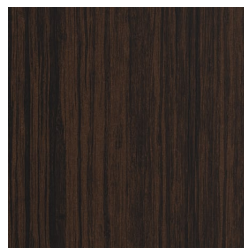
## Zintra Timber



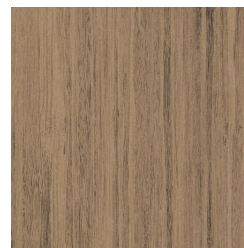
Eucalyptus



Ironbark



Merbau

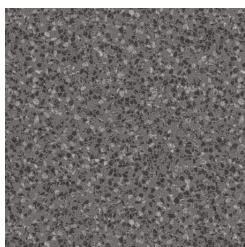


Spotted Gum

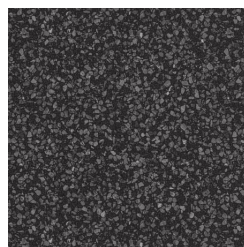
## Zintra Premium Material



Terrazzo Light



Terrazzo Medium



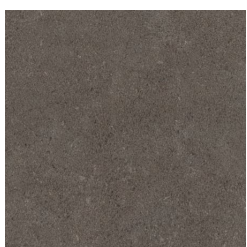
Terrazzo Dark



Travertine Light



Travertine Medium



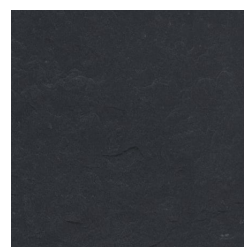
Travertine Dark



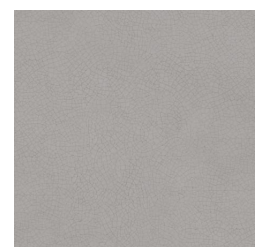
Shale Light



Shale Medium



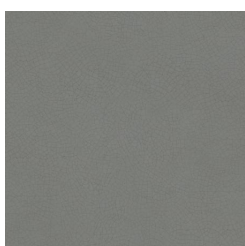
Shale Dark



Raku Bone



Raku Luster



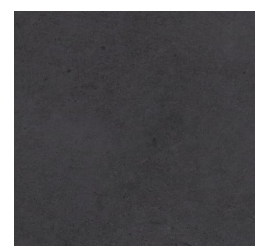
Raku Jade



Concrete Cast



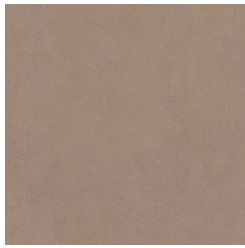
Concrete Polished



Concrete Dark Tint

# BAFFLE SYSTEMS QUARTER

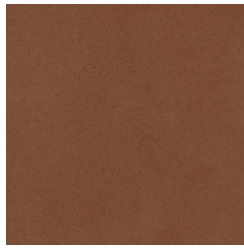
Acoustics » Acoustic Baffles



Terracotta Sun  
Bleached



Terracotta Mission



Terracotta Antique

## Zintra Premium Wood



Knotty Pine



Maple



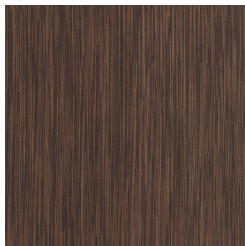
Poplar



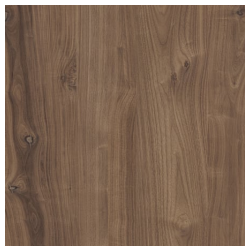
Australian Walnut



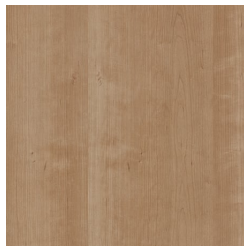
Claro Walnut



Palm Wood



Rustic Walnut



Cherry



Euro Beech



Lacewood

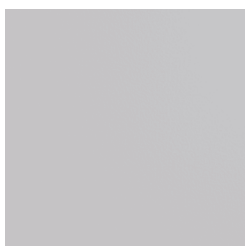


Redwood

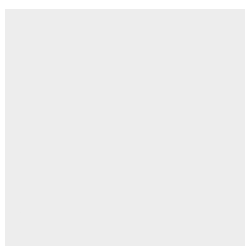


White Oak

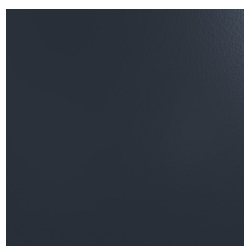
## Powdercoat



Anodised Silver



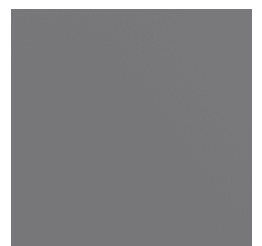
Bengal White



Denim



Fern

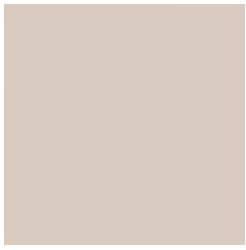


Gunmetal

# BAFFLE SYSTEMS QUARTER

Acoustics » Acoustic Baffles

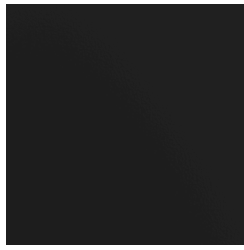
---



Light Grey



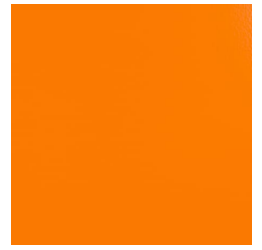
Marigold



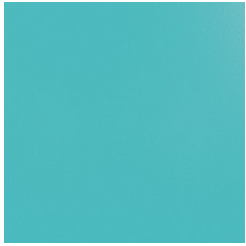
Matte Black



Spice



Tango



Teal



Terracotta