

# BAFFLE SYSTEMS CANYON

Acoustics » Acoustic Baffles



Brand: **Zintra**

Collections: **Baffle Systems**

Applications: **Ceilings**

1300 306 399

[info@baresque.com.au](mailto:info@baresque.com.au)

[baresque.com.au](http://baresque.com.au)

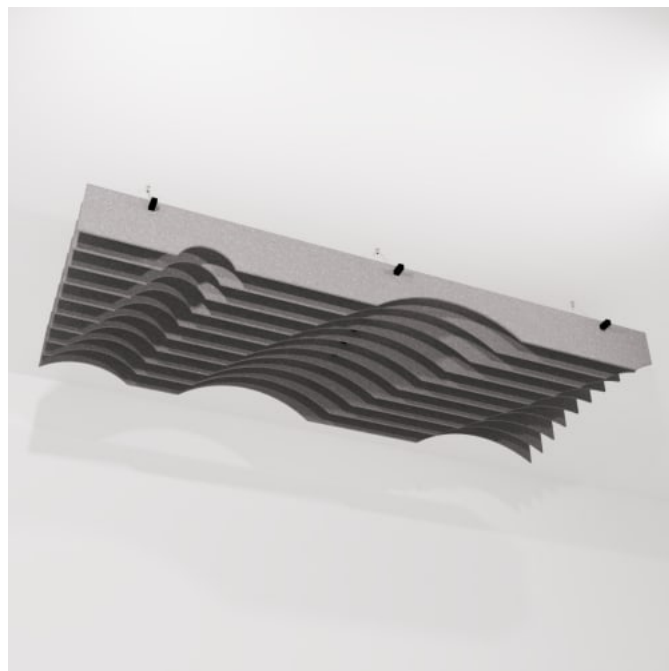
1 of 9

# BAFFLE SYSTEMS CANYON

**Acoustics** » Acoustic Baffles



Baffle Systems Canyon - Cadet



Baffle Systems Canyon Detail

# BAFFLE SYSTEMS CANYON

Acoustics » Acoustic Baffles

Transform your space with Zintra Baffle System, Canyon design. Our high-performing baffles offer flexible and dynamic acoustic control, perfect for enhancing spacious environments

- ✓ Acoustic
- ✓ Bleach Cleanable
- ✓ Easy Clean
- ✓ Easy Install

Description	<p>A modern solution for acoustic control, Zintra Baffles are a prefabricated, ceiling mounted system. Showcasing Zintra’s flexible characteristics and offering superior acoustic control, Zintra Acoustic Baffles are an innovative replacement to traditional mineral fibre lay systems.</p> <p>By exposing the ceiling, Zintra baffles create an open and airy atmosphere while efficiently mitigating noise levels.</p> <p><b>Canyon</b></p> <p>Embodies its namesake, resembling the rugged terrain of a canyon. Its textured pattern exudes a natural and earthy vibe, adding depth and character to your space.</p> <p>Easy to assemble, easy to install and available in a large array of designs, baffles are ideally suited to large noisy spaces in educational institutions, shopping centres, restaurants, and airports.</p> <p><b>Available in 11 designs</b></p> <p>Bolt   Canyon   Gorge   Individual   Louvre   Quarter   Ridge   Square   Swell   V-Fold   Wave</p> <p>Combining a dynamic aesthetic appeal and acoustic performance these systems are supplied ready to install with minimum fuss. A great advantage of the vertical blades is the increased surface area that is presented to the room resulting in a greater absorption of sound compared to flat panels.</p> <p>Zintra Baffles present a modern and budget-friendly solution for cultivating a tranquil and efficient workspace.</p> <p>Choose from one of our 12 vibrant powdercoat colors (additional charge)</p>
-------------	--

How to Specify	<div>1. Select Design</div> <div>2. Select Size</div> <div>3. Select Zintra Colour</div>
----------------	--

Composition	<p>Zintra Acoustic Panel - 100% Solution Dyed (Colour Through) Polyester</p> <p>12mm (1/2") - Density 2.4 kg /m² 0.5 lb/ft²</p>
-------------	---

# BAFFLE SYSTEMS CANYON

Acoustics » Acoustic Baffles

---

## Sustainability

Zintra is made from 100% recyclable materials.

- 60% post-consumer recycled content from PET bottles.
  - 35% pre-consumer recycled content from PET chips
  - 5% polylactic acid (PLA)
- 

## Dimensions

Available in 2 sizes, Small Baffle and Large Baffle.

- **Small:** 1220mm (48") w x 1220mm (48") d
- **Large:** 1220mm (48") w x 2745mm (108") d

Available in 120mm (4.7") or 240mm (9.5") high

---

## Fire Rating

ASTM-E84 – Class A classification  
AS ISO 9705 – 2003 – Group 1 classification  
EN-13501 – B-s2-d0 classification

---

## Supplied As

### Canyons: 10 Blades

- Depending on size:
  - 4 or 6 Adjustable Suspension Kit (ASK) | 2 or 3 x Aluminium Tube with Notches | 4 or 6 x Aluminium End Caps | 2 or 3 x 24mm (1") Zintra Connectors
- 

## Assembly & Delivery

Ships Flat Packed.

Assemble your Baffle System then suspend from the ceiling using hanging hardware supplied.

Go to the Technical Documents and download the Installation Guide for more details.

---

## Suggested Installation

Go to Technical Documents and download the Installation Guide for more details.

---

# BAFFLE SYSTEMS CANYON

Acoustics » Acoustic Baffles

Care Instructions	<p>Vacuum to remove dust.</p> <p>Dab Zintra with a damp clean cloth and mild solution of liquid detergent and warm water. Repeat using only clean water, then pat dry with a lint free cloth.</p> <p>For difficult stains, use a solution of household bleach (10% bleach / 90% water). To remove the bleach, repeat using a clean, water dampened cloth, then pat dry.</p> <p>Always test in an inconspicuous area first and if you don't see the expected results, contact us.</p>
-------------------	--

Warranty	Visit FAQ for more details.
----------	-----------------------------

Customisable	<p>Zintra Acoustic Panel - 100% Solution Dyed (Colour Through) Polyester</p> <p>12mm (1/2") - Density 2.4 kg /m² 0.5 lb/ft²</p>
--------------	---

Additional Comments	<p>NRC Rating</p> <ul style="list-style-type: none"><li>• Without Air Gap: Up to 0.95</li><li>• With 24" (610mm) Air Gap: Up to 1.00</li></ul>
---------------------	--



# BAFFLE SYSTEMS CANYON

Acoustics » Acoustic Baffles

## Colour & Finish Options

Zintra 12mm Solid PET



Bark



Brick



Cadet



Chambray



Cobalt



Ecru



Elderberry



Fossil



Frost



Grass



Greige



Ivory



Linen



Malachite



Mandarin



Meadow



Midnight



Ochre



Olive



Parchment



Pebble



Pewter



Saffron



Sky



Smoke

# BAFFLE SYSTEMS CANYON

Acoustics » Acoustic Baffles



Slate



Storm



Sunshine



Tar



Twilight

## Zintra Timber



Eucalyptus



Ironbark



Merbau



Spotted Gum

## Zintra Premium Material



Terrazzo Light



Terrazzo Medium



Terrazzo Dark



Travertine Light



Travertine Medium



Travertine Dark



Shale Light



Shale Medium



Shale Dark



Raku Bone



Raku Luster



Raku Jade



Concrete Cast



Concrete Polished



Concrete Dark Tint



# BAFFLE SYSTEMS CANYON

Acoustics » Acoustic Baffles



Terracotta Sun  
Bleached



Terracotta Mission



Terracotta Antique

## Zintra Premium Wood



Knotty Pine



Maple



Poplar



Australian Walnut



Claro Walnut



Palm Wood



Rustic Walnut



Cherry



Euro Beech



Lacewood

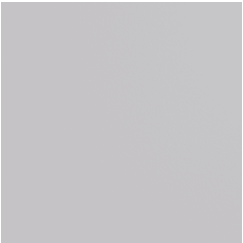


Redwood

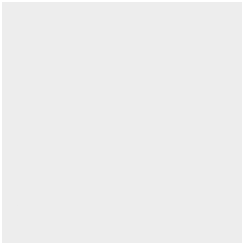


White Oak

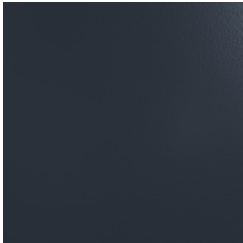
## Powdercoat



Anodised Silver



Bengal White



Denim



Fern

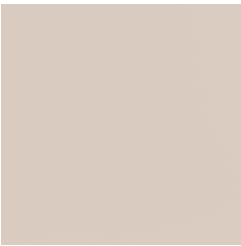


Gunmetal



# BAFFLE SYSTEMS CANYON

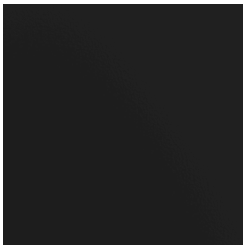
Acoustics » Acoustic Baffles



Light Grey



Marigold



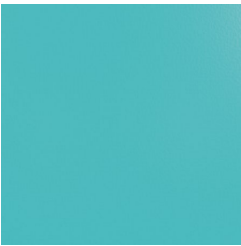
Matte Black



Spice



Tango



Teal



Terracotta