

BAFFLE SYSTEMS BOLT

Acoustics » Acoustic Baffles



Brand: **Zintra**

Collections: **Baffle Systems**

Applications: **Ceilings**

1300 306 399

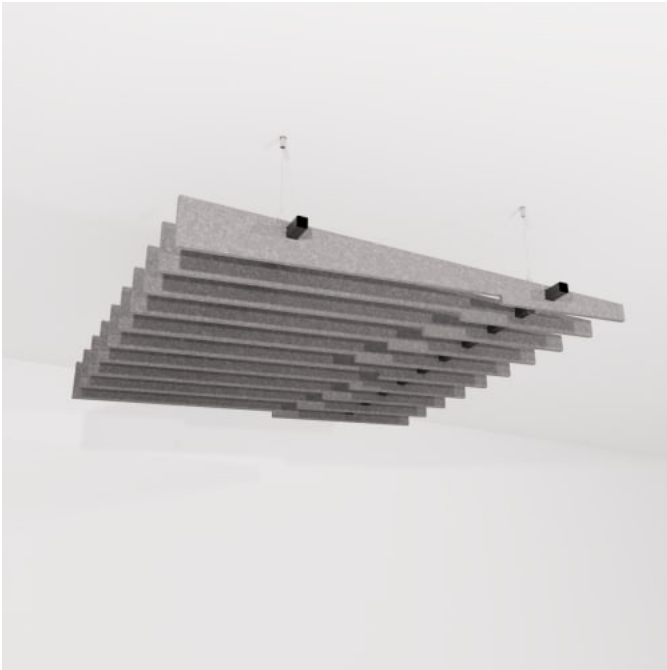
info@baresque.com.au

baresque.com.au

1 of 9

BAFFLE SYSTEMS BOLT

Acoustics » Acoustic Baffles



Baffle Systems Bolt Detail

BAFFLE SYSTEMS BOLT

Acoustics » Acoustic Baffles

Transform your space with Zintra Baffle System, Bolt design. Our high-performing baffles offer flexible and dynamic acoustic control, perfect for enhancing spacious environments

✓ Acoustic

✓ Bleach Cleanable

✓ Easy Clean

✓ Easy Install

Description

A modern solution for acoustic control, Zintra Baffles are a prefabricated, ceiling mounted system. Showcasing Zintra's flexible characteristics and offering superior acoustic control, Zintra Acoustic Baffles are an innovative replacement to traditional mineral fibre lay systems.

By exposing the ceiling, Zintra baffles create an open and airy atmosphere while efficiently mitigating noise levels.

Bolt

A dynamic and electrifying blade design, reminiscent of a lightning bolt. Its striking pattern evokes a sense of energy and motion.

Easy to assemble, easy to install and available in a large array of designs, baffles are ideally suited to large noisy spaces in educational institutions, shopping centres, restaurants, and airports.

Available in 11 designs

Bolt | Canyon | Gorge | Individual | Louvre | Quarter | Ridge | Square | Swell | V-Fold | Wave

Combining a dynamic aesthetic appeal and acoustic performance these systems are supplied ready to install with minimum fuss. A great advantage of the vertical blades is the increased surface area that is presented to the room resulting in a greater absorption of sound compared to flat panels.

Zintra Baffles present a modern and budget-friendly solution for cultivating a tranquil and efficient workspace.

Choose from one of our 12 vibrant powdercoat colors (additional charge)

How to Specify

1. Select Design
2. Select Size
3. Select Zintra Colour

Composition

Zintra Acoustic Panel - 100% Solution Dyed (Colour Through) Polyester

12mm (1/2") - Density 2.4 kg /m² 0.5 lb/ft²

BAFFLE SYSTEMS BOLT

Acoustics » Acoustic Baffles

Sustainability

Zintra is made from 100% recyclable materials.

- 60% post-consumer recycled content from PET bottles.
 - 35% pre-consumer recycled content from PET chips
 - 5% polylactic acid (PLA)
-

Dimensions

Available in 2 sizes, Small Baffle and Large Baffle.

- **Small:** 1220mm (48") w x 1220mm (48") d
- **Large:** 1220mm (48") w x 2745mm (108") d

Available in 120mm (4.7") or 240mm (9.5") high

Fire Rating

ASTM-E84 – Class A classification
AS ISO 9705 – 2003 – Group 1 classification
EN-13501 – B-s2-d0 classification

Supplied As

Bolt: 10 Zintra Blades

- Depending on size:
 - 4 or 6 Adjustable Suspension Kit (ASK) | 4 or 6 Adjustable Fastener | 4 or 6 Hanger Bolts | 2 or 3 x Aluminium Tube with Notches | 4 or 6 x Aluminium End Caps | 2 or 3 x 24mm (1") Zintra Connectors
-

Assembly & Delivery

Ships Flat Packed.

Assemble your Baffle System then suspend from the ceiling using hanging hardware supplied.

Go to the Technical Documents and download the Installation Guide for more details.

Suggested Installation

Go to Technical Documents and download the Installation Guide for more details.

BAFFLE SYSTEMS BOLT

Acoustics » Acoustic Baffles

Care Instructions

Vacuum to remove dust.

Dab Zintra with a damp clean cloth and mild solution of liquid detergent and warm water. Repeat using only clean water, then pat dry with a lint free cloth.

For difficult stains, use a solution of household bleach (10% bleach / 90% water). To remove the bleach, repeat using a clean, water dampened cloth, then pat dry.

Always test in an inconspicuous area first and if you don't see the expected results, contact us.

Warranty

Visit FAQ for more details.

Customisable

Zintra Acoustic Panel - 100% Solution Dyed (Colour Through) Polyester

12mm (1/2") - Density 2.4 kg /m² 0.5 lb/ft²

Additional Comments

NRC Rating

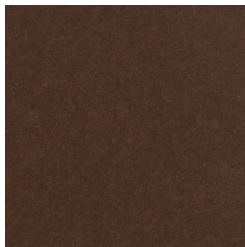
- Without Air Gap: Up to 0.95
 - With 24" (610mm) Air Gap: Up to 1.00
-

BAFFLE SYSTEMS BOLT

Acoustics » Acoustic Baffles

Colour & Finish Options

Zintra 12mm Solid PET



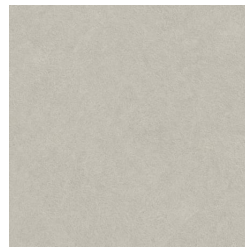
Bark



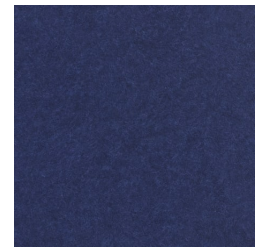
Brick



Cadet



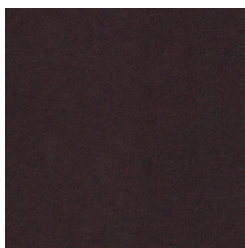
Chambray



Cobalt



Ecru



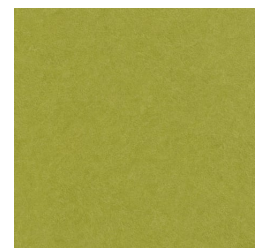
Elderberry



Fossil



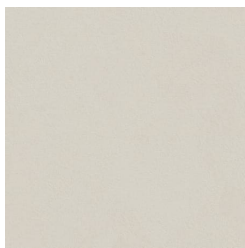
Frost



Grass



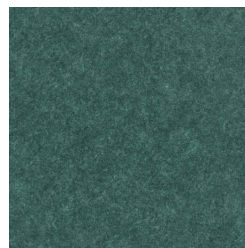
Greige



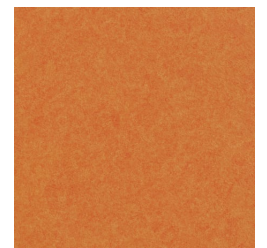
Ivory



Linen



Malachite



Mandarin



Meadow



Midnight



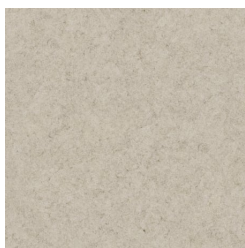
Ochre



Olive



Parchment



Pebble



Pewter



Saffron



Sky



Smoke

BAFFLE SYSTEMS BOLT

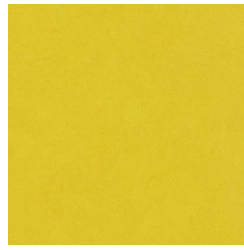
Acoustics » Acoustic Baffles



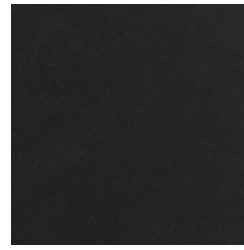
Slate



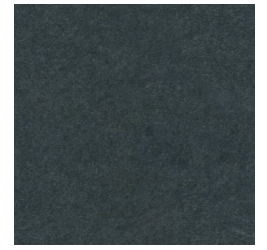
Storm



Sunshine



Tar



Twilight

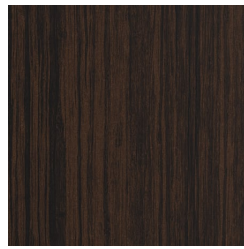
Zintra Timber



Eucalyptus



Ironbark



Merbau

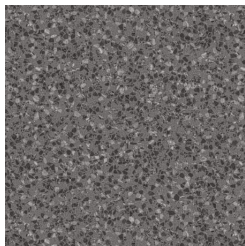


Spotted Gum

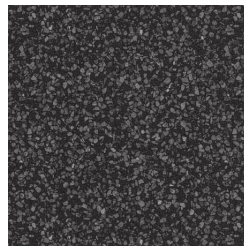
Zintra Premium Material



Terrazzo Light



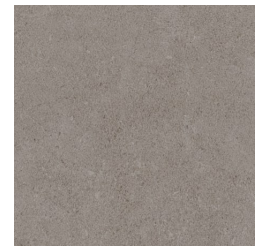
Terrazzo Medium



Terrazzo Dark



Travertine Light



Travertine Medium



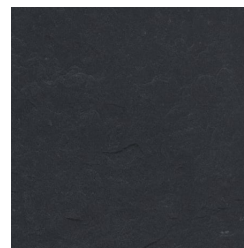
Travertine Dark



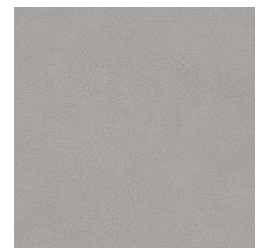
Shale Light



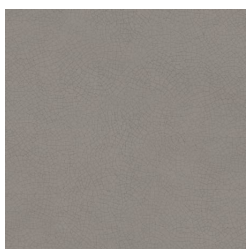
Shale Medium



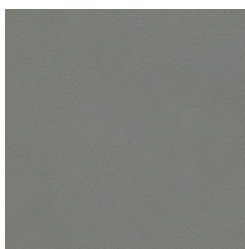
Shale Dark



Raku Bone



Raku Luster



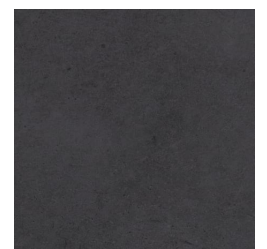
Raku Jade



Concrete Cast



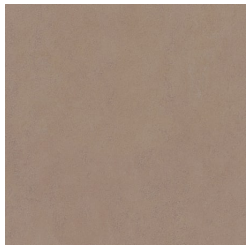
Concrete Polished



Concrete Dark Tint

BAFFLE SYSTEMS BOLT

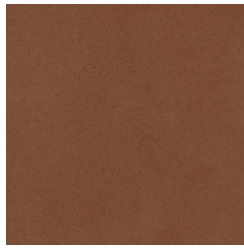
Acoustics » Acoustic Baffles



Terracotta Sun
Bleached



Terracotta Mission



Terracotta Antique

Zintra Premium Wood



Knotty Pine



Maple



Poplar



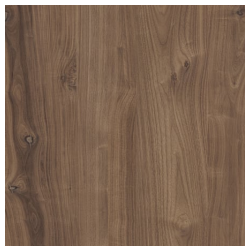
Australian Walnut



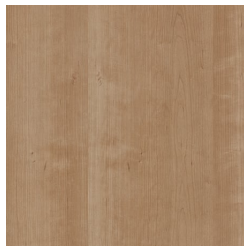
Claro Walnut



Palm Wood



Rustic Walnut



Cherry



Euro Beech



Lacewood

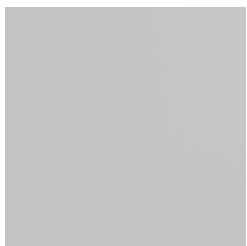


Redwood

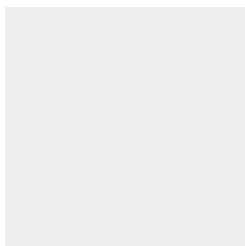


White Oak

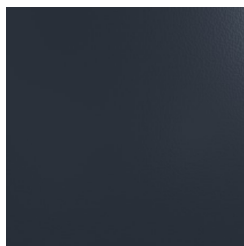
Powdercoat



Anodised Silver



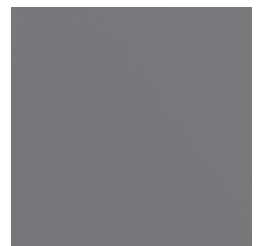
Bengal White



Denim



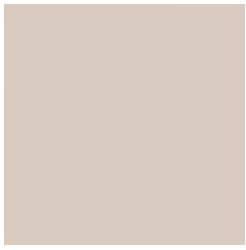
Fern



Gunmetal

BAFFLE SYSTEMS BOLT

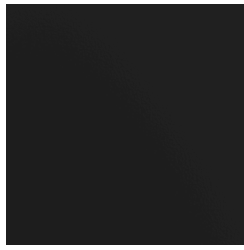
Acoustics » Acoustic Baffles



Light Grey



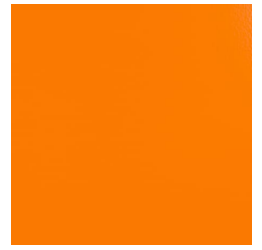
Marigold



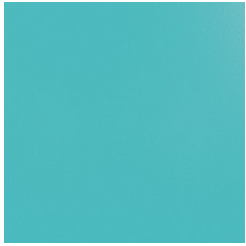
Matte Black



Spice



Tango



Teal



Terracotta