

# BEAMS OPEN RAFTER

Acoustics » Acoustic Baffles



Brand: **Zintra**

Collections: **Beams**

Applications: **Ceilings**

1300 306 399

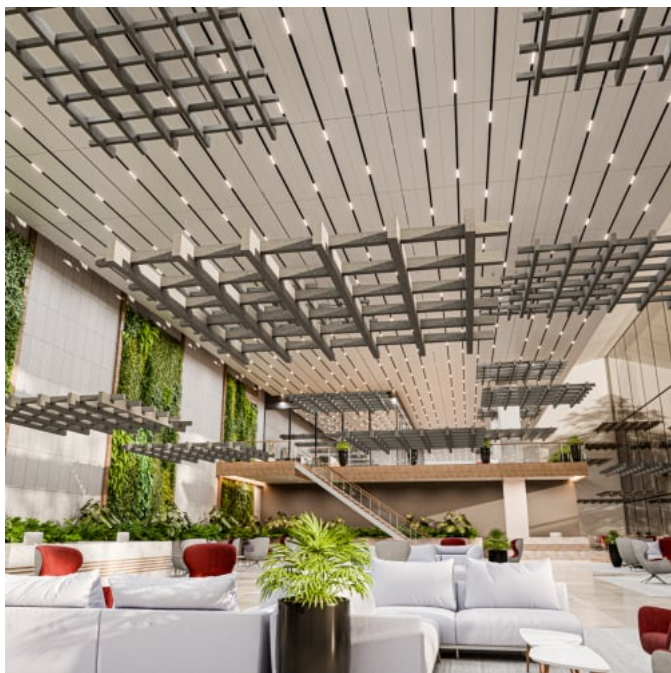
[info@baresque.com.au](mailto:info@baresque.com.au)

[baresque.com.au](http://baresque.com.au)

1 of 9

# BEAMS OPEN RAFTER

Acoustics » Acoustic Baffles



Beams Open Rafter - Pewter



Beams Open Rafter 5 x 5 Detail



Beams Open Rafter 4 x 5 Detail



Beams Open Rafter 3 x 5 Detail

# BEAMS OPEN RAFTER

**Acoustics** » Acoustic Baffles

---



Beams Open Rafter 2 x 5 Detail



Beams Open Rafter 1 x 5 Detail

# BEAMS OPEN RAFTER

Acoustics » Acoustic Baffles

Acoustic solutions reach new heights with Zintra Beams Open Rafter, Rustic and full of character. Their modular nature brings both versatility and grandeur to your design.

- ✓ Acoustic
- ✓ Bleach Cleanable
- ✓ Easy Clean
- ✓ Easy Install

Description	<p>Large spaces require acoustic solutions that match their scale. Zintra Beams collection address this need perfectly, offering substantial proportions that exude a sense of structure and architectural grandeur. Their modular design allows for a variety of configurations across a range of styles and sizes and includes connectors for effortless customization to suit any space.</p> <p>There are 5 different geometric designs available: Open &amp; Closed Rafter, Rectangular, Square and Parallel Beams, available in various sizes (please refer to the dimensions for design specific details). We even have a coffer available to suit open, closed and square designs for added acoustic comfort.</p> <p><b>Open Rafter</b></p> <p>A rustic and character-filled design, emphasizing its open-edge feature as the core of its modular structure. Available in five standard configurations, providing lightweight solutions tailored to various spaces. With a selection of 30 colours and realistic wood prints, it aims to enhance architectural aesthetics. Specifically engineered for superior acoustics and optional coffer panels available to further improve NRC rating.</p> <p>Engineered for superior sound absorption, Zintra Beams function as porous absorbers across the entire frequency range. This significantly enhances the NRC rating, up to a maximum of 1.5.</p>
How to Specify	<ol style="list-style-type: none"><li>1. Select design</li><li>2. Select Size</li><li>3. Select Zintra Colour</li></ol>
Composition	<p>Zintra Acoustic Panel - 100% Solution Dyed (Colour Through) Polyester</p> <p>12mm (1/2") - Density 2.4 kg /m² 0.5 lb/ft²</p>
Sustainability	<p>Zintra is made from 100% recyclable materials.</p> <ul style="list-style-type: none"><li>• 60% post-consumer recycled content from Zintra bottles.</li><li>• 35% pre-consumer recycled content from Zintra chips</li><li>• 5% polylactic acid (PLA)</li></ul>

# BEAMS OPEN RAFTER

Acoustics » Acoustic Baffles

## Dimensions

### Open Rafter

- 5 x 5 3658mm (144") w x 203mm (8") h x 3658mm (144") d
- 4 x 5 3048mm (120") w x 203mm (8") h x 3658mm (144") d
- 3 x 5 2438mm (96") w x 203mm (8") h x 3658mm (144") d
- 2 x 5 1829mm (72") w x 203mm (8") h x 3658mm (144") d
- 1 x 5 1219mm (48") w x 203mm (8") h x 3658mm (144") d

## Fire Rating

ASTM-E84 – Class A classification  
AS ISO 9705 – 2003 – Group 1 classification  
EN-13501 – B-s2-d0 classification

## Supplied As

Flat Pack – Details per design:

### Open Rafter

- 1 x Kit of chosen size including: Clear 24mm (1") Beams Clip
- 5 x 5 =144 | 4 x 5 =122 | 3 x 5 =100 | 2 x 5 =78 | 1 x 5 =56 (Clips)

## Assembly & Delivery

Ships Flat Pack

- Assembly Required.
- Cable Suspension OR Unistrut. Refer preferred installation method Install Guide

Go to the Technical Documents and download the Installation Guide for more details.

## Suggested Installation

Go to Technical Documents and download the Installation Guide for more details.

## Care Instructions

Vacuum to remove dust.

Dab Zintra with a damp clean cloth and mild solution of liquid detergent and warm water. Repeat using only clean water, then pat dry with a lint free cloth.

For difficult stains, use a solution of household bleach (10% bleach / 90% water). To remove the bleach, repeat using a clean, water dampened cloth, then pat dry.

Always test in an inconspicuous area first and if you don't see the expected results, contact us.

# BEAMS OPEN RAFTER

Acoustics » Acoustic Baffles

Warranty	Visit <a href="#">FAQ</a> for more details.
Customisable	The Zintra Acoustic Solutions range is customisable to your project. Please get in touch with your local contact for details.
Additional Comments	<ul style="list-style-type: none"><li>• NRC 1.0</li><li>• NRC 1.5 With Coffers</li></ul>



# BEAMS OPEN RAFTER

Acoustics » Acoustic Baffles

## Colour & Finish Options

Zintra 12mm Solid PET



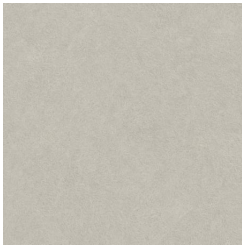
Bark



Brick



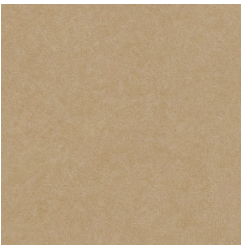
Cadet



Chambray



Cobalt



Ecru



Elderberry



Fossil



Frost



Grass



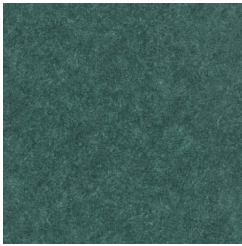
Greige



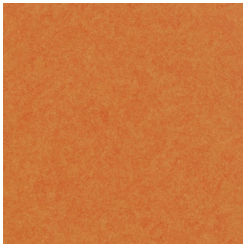
Ivory



Linen



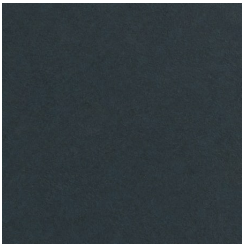
Malachite



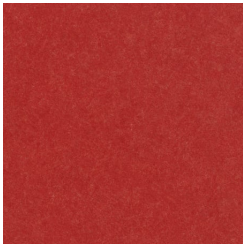
Mandarin



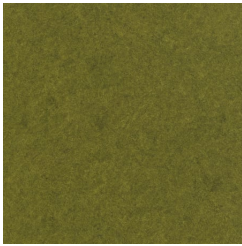
Meadow



Midnight



Ochre



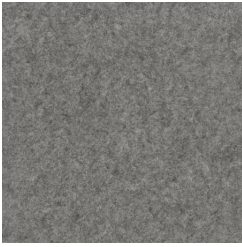
Olive



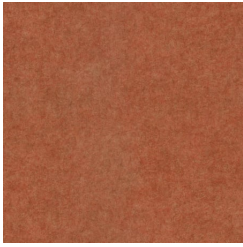
Parchment



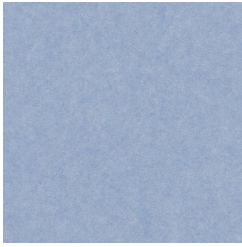
Pebble



Pewter



Saffron



Sky



Smoke

# BEAMS OPEN RAFTER

Acoustics » Acoustic Baffles



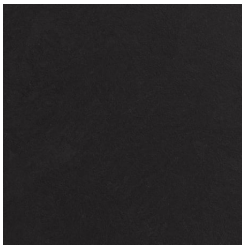
Slate



Storm



Sunshine



Tar



Twilight

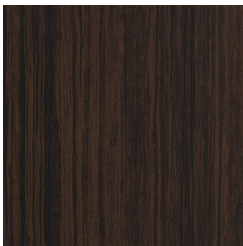
## Zintra Timber Print



Eucalyptus



Ironbark



Merbau

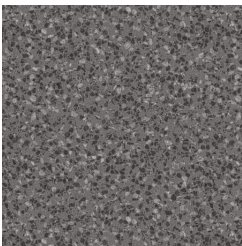


Spotted Gum

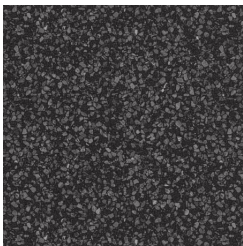
## Zintra Premium Material



Terrazzo Light



Terrazzo Medium



Terrazzo Dark



Travertine Light



Travertine Medium



Travertine Dark



Shale Light



Shale Medium



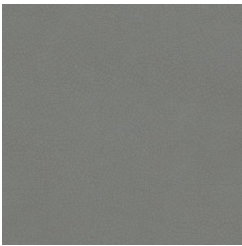
Shale Dark



Raku Bone



Raku Luster



Raku Jade



Concrete Cast



Concrete Polished

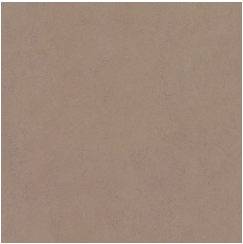


Concrete Dark Tint



# BEAMS OPEN RAFTER

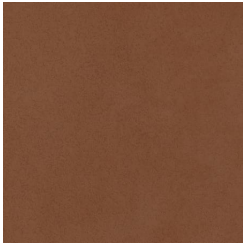
Acoustics » Acoustic Baffles



Terracotta Sun  
Bleached



Terracotta Mission



Terracotta Antique

## Zintra Premium Wood



Knotty Pine



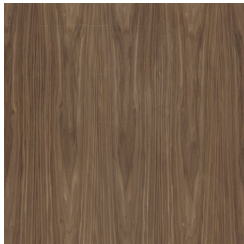
Maple



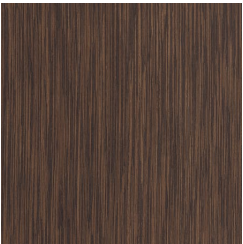
Poplar



Australian Walnut



Claro Walnut



Palm Wood



Rustic Walnut



Cherry



Euro Beech



Lacewood



Redwood



White Oak