

PATTERN TILES ENTWINE

Acoustics » Tiles



Brand: **Zintra**

Collections: **Pattern Tiles**

Applications: **Walls, Tiles**

1300 306 399

info@baresque.com.au

baresque.com.au

1 of 7

PATTERN TILES ENTWINE

Acoustics » Tiles



Pattern Tile Entwine Detail



Pattern Tile Entwine Detail 2

PATTERN TILES ENTWINE

Acoustics » Tiles

Unleash boundless creativity with Zintra Pattern Tiles, where patterns within patterns come to life. These multi-dimensional tiles ignite inspiration, with each twist revealing a new dimension of design. Let your creativity flourish with our Entwine design.

Description

Discover the versatility and creative potential of Zintra Pattern Tiles, where timeless elegance meets contemporary flair. Intricately cut designs adorn each tile, crafted from high-quality Zintra material and mounted onto a back panel in your choice of matching or contrasting Zintra Colour. This innovative approach introduces style, texture, contrast, and depth to your walls or ceilings, all while offering superior sound absorption for a harmonious ambiance.

Entwine

Entwine showcases a variety of intricate pattern designs featuring intertwining lines and shapes, creating visually stunning and dynamic patterns. With their fluid lines and mesmerizing forms, Entwine Patterns add a sense of movement and sophistication to any interior.

With a vast selection of 30 front and back Colours to choose from, allowing for thousands of unique combinations before even considering layout options. Elevate both visual interest and acoustics in your space with Zintra Pattern Tiles, available in 10 captivating designs (and multiple configurations), offered in single or dual layers.

Available in 10 designs single or double layer *

Arch | Billet* | Entwine | Groove* | Halftone* | Leap | Lotus | Pathway* | Striae | Surge

Let your creativity flourish as you transform your environment into a masterpiece of design and sound with Zintra Pattern Tiles.

Sold in sets.

Not suitable as a free standing product.

How to Specify

1. Select Design
 2. Select Zintra Colour
-

Composition

Zintra Acoustic Panel - 100% Solution Dyed (Colour Through) Polyester

- 12mm (1/2") - Density 2.4 kg /m² 0.5 lb/ft²
 - 24mm (1") - Density 3.6 kg /m² 0.75 lb/ft²
-

PATTERN TILES ENTWINE

Acoustics » Tiles

Sustainability

Zintra is made from 100% recyclable materials.

- 60% post-consumer recycled content from PET bottles.
 - 35% pre-consumer recycled content from PET chips
 - 5% polylactic acid (PLA)
-

Dimensions

Entwine:

- 10 tiles / set, 2.1m² (22.8 SF)
 - 495mm (19.47") h x 571mm (22.49") w
-

Fire Rating

ASTM-E84 – Class A classification
AS ISO 9705 – 2003 – Group 1 classification
EN-13501 – B-s2-d0 classification

Supplied As

- Entwine 10 tiles / set, 2.1m² (22.8 SF)
-

Assembly & Delivery

Ships Flat Packed.

- Supplied as a set of individual tiles.
- Arrange as required.

Go to the Technical Documents and download the Installation Guide for more details.

Suggested Installation

Go to Technical Documents and download the Installation Guide for more details.

Care Instructions

Vacuum to remove dust.

Dab Zintra with a damp clean cloth and mild solution of liquid detergent and warm water. Repeat using only clean water, then pat dry with a lint free cloth.

For difficult stains, use a solution of household bleach (10% bleach / 90% water). To remove the bleach, repeat using a clean, water dampened cloth, then pat dry.

Always test in an inconspicuous area first and if you don't see the expected results, contact us.

Warranty

Visit FAQ for more details.

PATTERN TILES ENTWINE

Acoustics » Tiles

Customisable

The Zintra Acoustic Solutions range is customisable to your project. Please get in touch with your local contact for details.

Additional Comments

- NRC 0.45-0.75 Directly Mounted
 - Alpha-w Rating Directly Mounted 0.30-0.60
-

PATTERN TILES ENTWINE

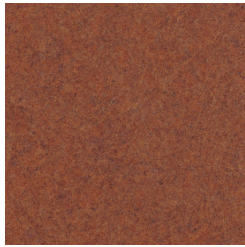
Acoustics » Tiles

Colour & Finish Options

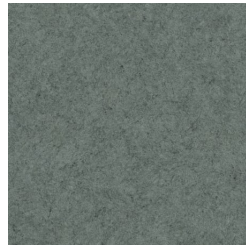
Zintra 12mm Solid PET



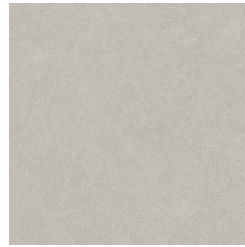
Bark



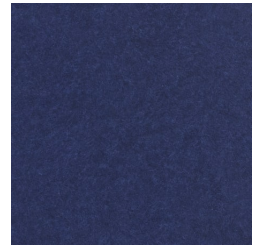
Brick



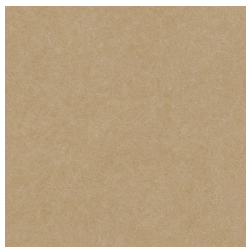
Cadet



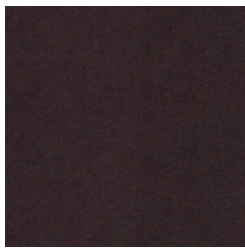
Chambray



Cobalt



Ecru



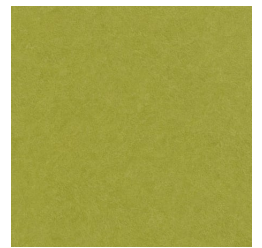
Elderberry



Fossil



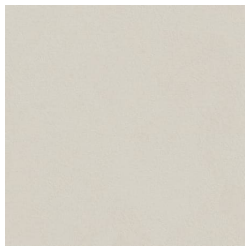
Frost



Grass



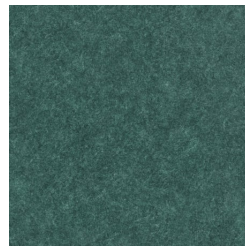
Greige



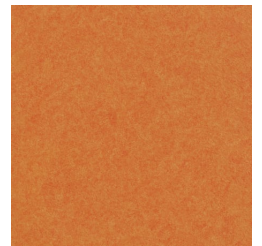
Ivory



Linen



Malachite



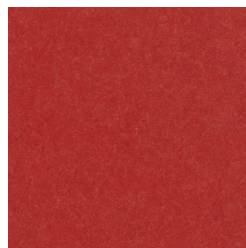
Mandarin



Meadow



Midnight



Ochre



Olive



Parchment



Pebble



Pewter



Saffron



Sky



Smoke

PATTERN TILES ENTWINE

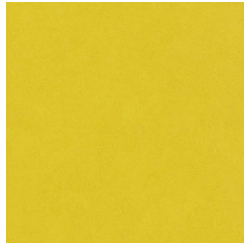
Acoustics » Tiles



Slate



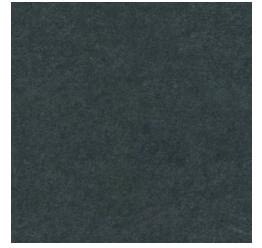
Storm



Sunshine



Tar



Twilight

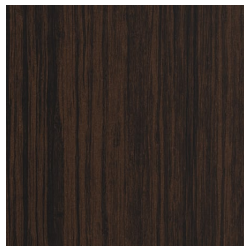
Zintra Timber



Eucalyptus



Ironbark



Merbau



Spotted Gum