

STICKS TRANSITION

Acoustics » Acoustic Sticks



Brand: **Zintra**

Applications: **Ceilings, Walls, Wall To Ceiling**

1300 306 399

info@baresque.com.au

baresque.com.au

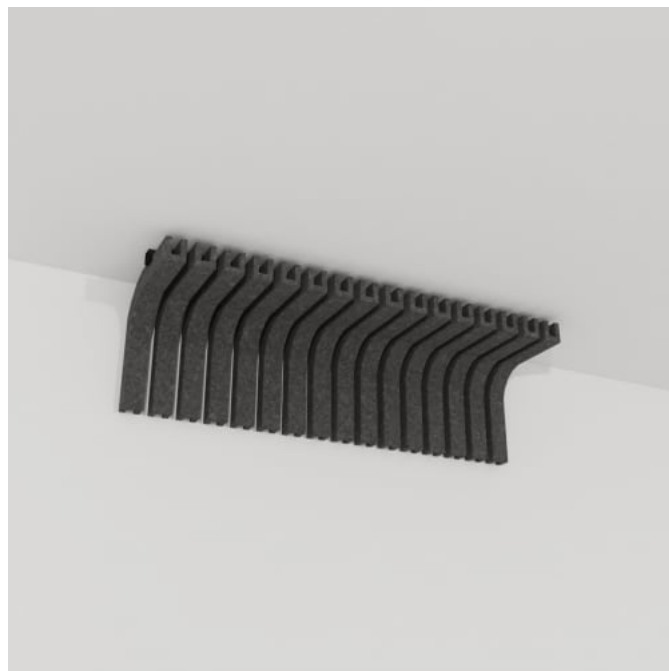
1 of 11

STICKS TRANSITION

Acoustics » Acoustic Sticks



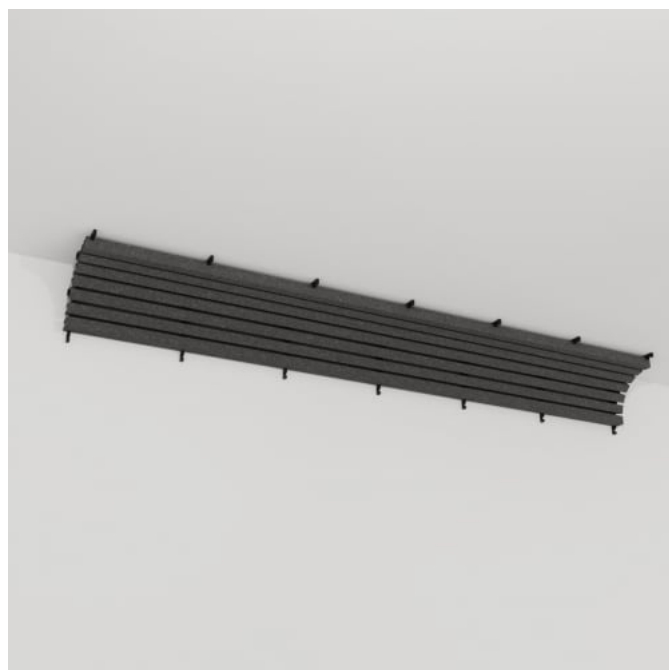
Sticks Bundles Transition Narrow 2



Sticks Bundles Portrait Transition Narrow Detail



Sticks Bundles Portrait Transition Wide Detail



Sticks Bundles Landscape Transition Narrow Detail

STICKS TRANSITION

Acoustics » Acoustic Sticks



Sticks Bundles Landscape Transition Wide Detail

STICKS TRANSITION

Acoustics » Acoustic Sticks

Seamless corner transitions are possible with the use of purpose designed Sticks Transition, designed to join bundles at inside corners.

✓ Acoustic

✓ Bleach Cleanable

✓ Easy Clean

✓ Easy Install

Description

Zintra Sticks are a versatile range of fabricated acoustic sticks designed for easy installation in any space.

Seamless corner transitions are possible with the use of purpose designed **Sticks Transition**. Designed to join bundles at inside corners and available in Landscape or Portrait.

Additionally, a selection of Sticks are available to address trim, and corners, ensuring a comprehensive solution tailored to your space.

Sticks Trim:

Zintra Sticks are impeccably finished around windows, doors, ceiling services and GPOs with our Sticks Trim. Supplied as a separate right-angle piece, Sticks Trim is easily cut in the field to mitre or butt join and glue to Sticks sets to provide a matching Timber finish to exposed ends.

Sticks External Corner:

A purpose designed transition piece that seamlessly deals with the corners of a wall. Available in Landscape or Portrait.

Choose from one of our 12 vibrant powdercoat colors (additional charge)

How to Specify

1. Wide or Narrow Sticks
2. Select Zintra colour

Composition

Zintra Acoustic Panel - 100% Solution Dyed (Colour Through) Polyester
12mm (1/2") - Density 2.4 kg /m² 0.5 lb/ft²

Sustainability

Zintra is made from 100% recyclable materials.

- 60% post-consumer recycled content from PET bottles.
- 35% pre-consumer recycled content from PET chips
- 5% polylactic acid (PLA)

STICKS TRANSITION

Acoustics » Acoustic Sticks

Dimensions

Landscape Transition:

- **Narrow** Set | 2745mm (108") w x 296mm (11.67") h
- **Wide** Set | 2745mm (108") w x 326mm (12.83") h

Portrait Transition:

- **Narrow** Set | 289mm (11.37") h x 953mm (37.5") w
- **Wide** Set | 289mm (11.37") h x 953mm (37.5") w

Fire Rating

ASTM-E84 – Class A classification
AS ISO 9705 – 2003 – Group 1 classification
EN-13501 – B-s2-d0 classification

STICKS TRANSITION

Acoustics » Acoustic Sticks

Supplied As

Sticks Bundle:

- Ships Flat Pack
- 7 x 24mm (1") Aluminium Tube Notched
- NARROW: 16 x Zintra Sticks
- WIDE: 8 x Zintra Sticks

Trim:

- 1 x Zintra Trim

Transition Landscape:

- Ships flat pack.
- 7 x Zintra Cover Supports
- 2 x 25mm (1") SHS Tubes - no notches
- WIDE: 4 Zintra Sticks
- NARROW: 7 Zintra Sticks

Transition Portrait:

- Ships flat pack.
- 2 x 24mm (1") SHS Tubes - notched.
- WIDE: 8 Zintra Sticks
- NARROW: 16 Zintra Sticks

External Corner Set:

- Ships Flat pack.
- 14 x 24mm (1") Aluminium Tubes
- 1 x Zintra Corner

Assembly & Delivery

Ships flat pack except Sticks Trim. Assembly required.

Go to the Technical Documents and download the Installation Guide for more details.

Suggested Installation

Go to Technical Documents and download the Installation Guide for more details.

STICKS TRANSITION

Acoustics » Acoustic Sticks

Care Instructions

Vacuum to remove dust.

Dab Zintra with a damp clean cloth and mild solution of liquid detergent and warm water. Repeat using only clean water, then pat dry with a lint free cloth.

For difficult stains, use a solution of household bleach (10% bleach / 90% water). To remove the bleach, repeat using a clean, water dampened cloth, then pat dry.

Always test in an inconspicuous area first and if you don't see the expected results, contact us.

Warranty

Visit FAQ for more details.

Customisable

The Zintra Acoustic Solutions range is customisable to your project. Please get in touch with your local contact for details.

Additional Comments

NRC Rating:

- Directly mounted: 0.8
 - With 6" (152mm) Air Gap: Up to 0.95
-

STICKS TRANSITION

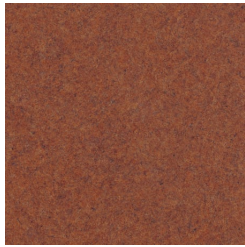
Acoustics » Acoustic Sticks

Colour & Finish Options

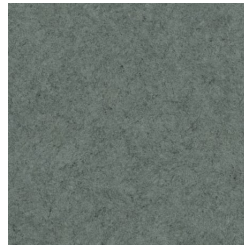
Zintra 12mm Solid PET



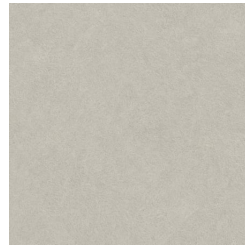
Bark



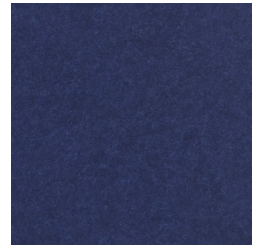
Brick



Cadet



Chambray



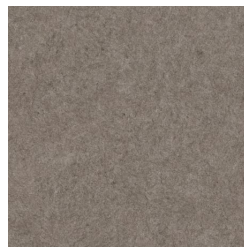
Cobalt



Ecru



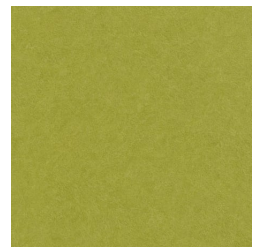
Elderberry



Fossil



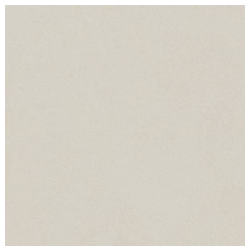
Frost



Grass



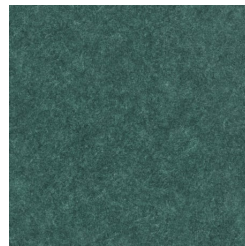
Greige



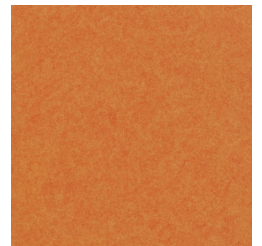
Ivory



Linen



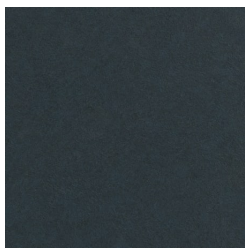
Malachite



Mandarin



Meadow



Midnight



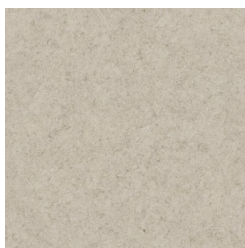
Ochre



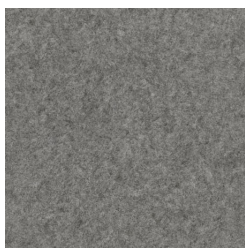
Olive



Parchment



Pebble



Pewter



Saffron



Sky



Smoke

STICKS TRANSITION

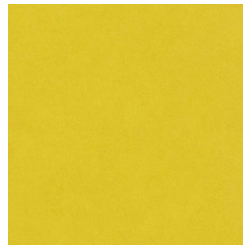
Acoustics » Acoustic Sticks



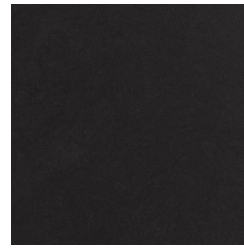
Slate



Storm



Sunshine



Tar



Twilight

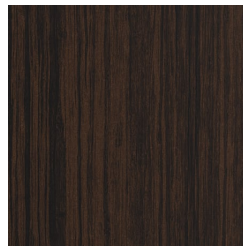
Zintra Timber Print



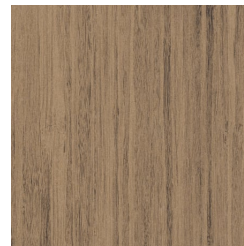
Eucalyptus



Ironbark



Merbau

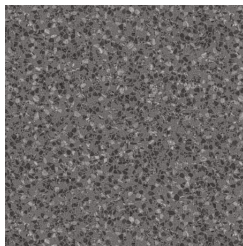


Spotted Gum

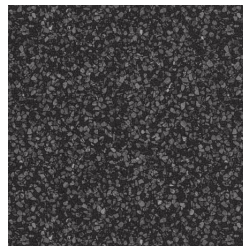
Zintra Premium Material



Terrazzo Light



Terrazzo Medium



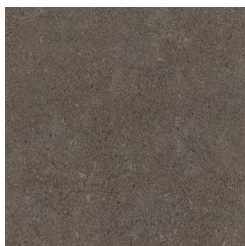
Terrazzo Dark



Travertine Light



Travertine Medium



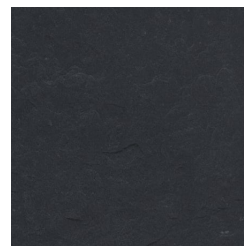
Travertine Dark



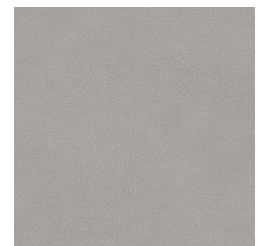
Shale Light



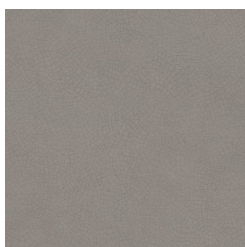
Shale Medium



Shale Dark



Raku Bone



Raku Luster



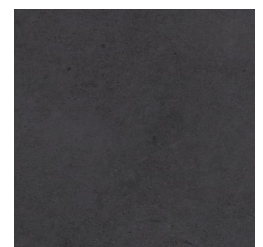
Raku Jade



Concrete Cast



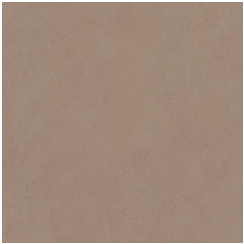
Concrete Polished



Concrete Dark Tint

STICKS TRANSITION

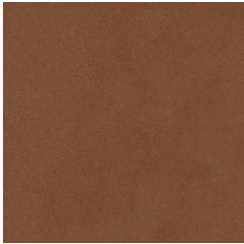
Acoustics » Acoustic Sticks



Terracotta Sun
Bleached



Terracotta Mission



Terracotta Antique

Zintra Premium Wood



Knotty Pine



Maple



Poplar



Australian Walnut



Claro Walnut



Palm Wood



Rustic Walnut



Cherry



Euro Beech



Lacewood

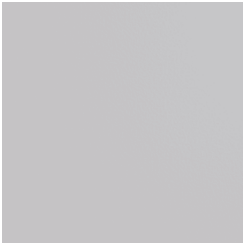


Redwood

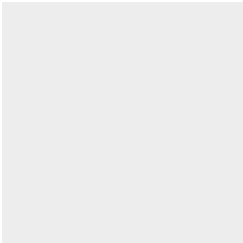


White Oak

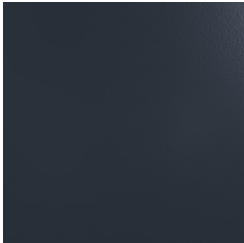
Powdercoat



Anodised Silver



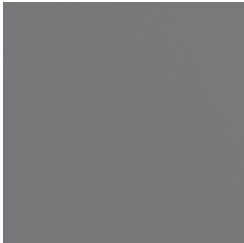
Bengal White



Denim



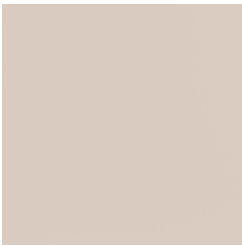
Fern



Gunmetal

STICKS TRANSITION

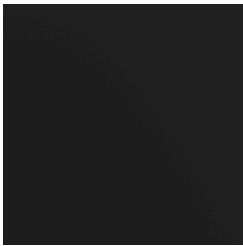
Acoustics » Acoustic Sticks



Light Grey



Marigold



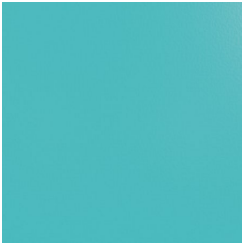
Matte Black



Spice



Tango



Teal



Terracotta