

ETCH TILES FLUTED

Acoustics » Tiles



Brand: **Zintra**

Collections: **Etch Tiles**

Applications: **Walls, Tiles**

1300 306 399

info@baresque.com.au

baresque.com.au

1 of 7

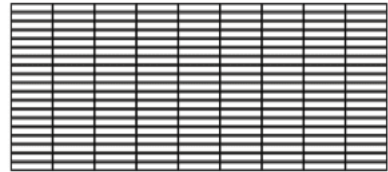
ETCH TILES FLUTED

Acoustics » Tiles



Etch Tiles Fluted Detail

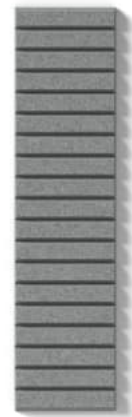
9 Tile Assembly



Assembly Suggestions Etch Tiles Fluted



Etch Tiles Fluted Detail 2



Etch Tiles Fluted Detail

ETCH TILES FLUTED

Acoustics » Tiles

Every line tells a story with Zintra Etch Tiles, Fluted. Sculptural, dynamic, and diverse in design, they inspire endless possibilities for dynamic arrangements and playful pattern exploration.

✓ Bleach Cleanable

✓ Acoustic

✓ Easy Install

✓ Easy Clean

Description

Zintra Etch Tiles, where acoustic absorption meets dynamic 3D design. Crafted using a 3mm v-groove, the angled blade creates contemporary, design-led patterns that add a touch of sophistication to any space. Whether you're aiming for a progressive, modern interior or a welcoming atmosphere, Zintra Etch offers a range of subtle textures to suit your design needs.

Available in an extensive range of understated to statement Colours, Zintra Etch Tiles offer a cost-effective solution to enhance both sound quality and visual appeal in commercial, hospitality, and institutional interiors. Create calming environments with these versatile tiles, which can be seamlessly integrated with plain Zintra panels for a cohesive look.

Install either wall to wall or as feature artwork to create an option suitable for any commercial, education or hospitality environment.

Fluted

Inspired by stacked subway tiles, blending classic charm with a contemporary twist, this design creates an elegant backdrop for a myriad of design applications.

Available in 15 designs

Battleaxe* | Chevron* | Crossbar | Diamond* | Fluted | Herringbone* | Hexagon* | Hourglass* | Link | Louver | Plank* | Shadow Box | Square* | Trapezium* | Triangle*

* Notes designs available in both Plain and Etch.

Sold in sets.

Transform your space with style and acoustic efficiency.

Not suitable as a free-standing product.

How to Specify

1. Select Design
2. Select Zintra Colour

Composition

Zintra Acoustic Panel - 100% Solution Dyed (Colour Through) Polyester

- 12mm (1/2") - Density 2.4 kg /m² 0.5 lb/ft²
- 24mm (1") - Density 3.6 kg /m² 0.75 lb/ft²

ETCH TILES FLUTED

Acoustics » Tiles

Sustainability

Zintra is made from 100% recyclable materials.

- 60% post-consumer recycled content from PET bottles.
 - 35% pre-consumer recycled content from PET chips
 - 5% polylactic acid (PLA)
-

Dimensions

Fluted:

- 9 tiles / set, 3.24 m² (35.37 SF)
 - 302mm (11.9") w x 1207mm (47.5") h
-

Fire Rating

ASTM-E84 – Class A classification
AS ISO 9705 – 2003 – Group 1 classification
EN-13501 – B-s2-d0 classification

Supplied As

- Fluted 9 tiles / set, 3.24 m² (35.37 SF)
-

Assembly & Delivery

Ships Flat Packed.

- Supplied as a set of individual tiles.
- Arrange as required.

Go to the Technical Documents and download the Installation Guide for more details.

Suggested Installation

Go to Technical Documents and download the Installation Guide for more details.

Care Instructions

Vacuum to remove dust.

Dab Zintra with a damp clean cloth and mild solution of liquid detergent and warm water. Repeat using only clean water, then pat dry with a lint free cloth.

For difficult stains, use a solution of household bleach (10% bleach / 90% water). To remove the bleach, repeat using a clean, water dampened cloth, then pat dry.

Always test in an inconspicuous area first and if you don't see the expected results, contact us.

Warranty

Visit FAQ for more details.

ETCH TILES FLUTED

Acoustics » Tiles

Customisable

The Zintra Acoustic Solutions range is customisable to your project. Please get in touch with your local contact for details.

Additional Comments

- NRC 0.45-0.75 Directly Mounted
 - Alpha-w Rating Directly Mounted 0.30-0.60
-

ETCH TILES FLUTED

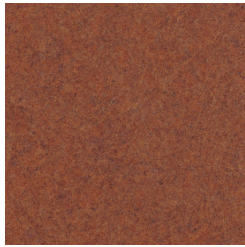
Acoustics » Tiles

Colour & Finish Options

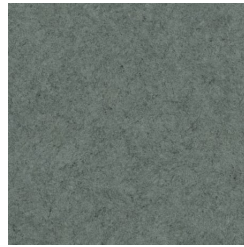
Zintra 12mm Solid PET



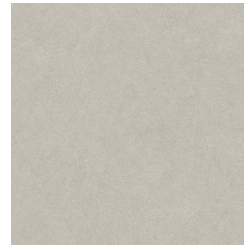
Bark



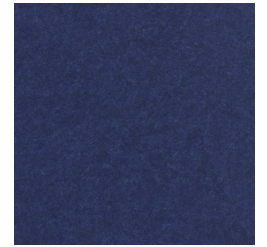
Brick



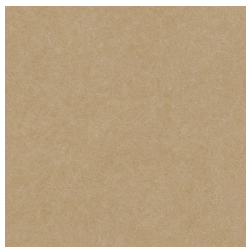
Cadet



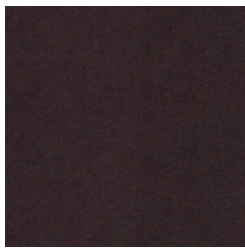
Chambray



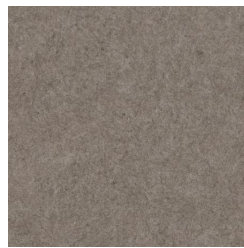
Cobalt



Ecru



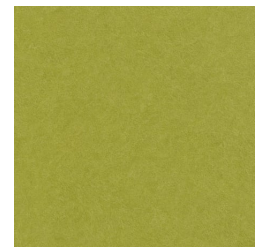
Elderberry



Fossil



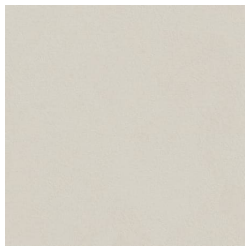
Frost



Grass



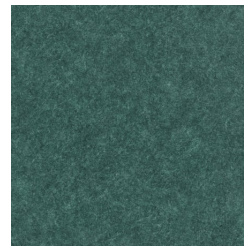
Greige



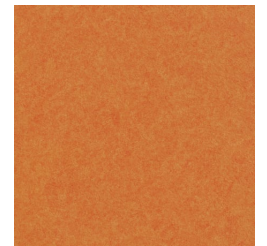
Ivory



Linen



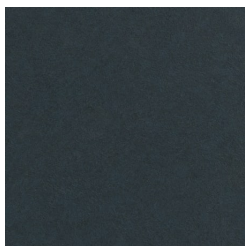
Malachite



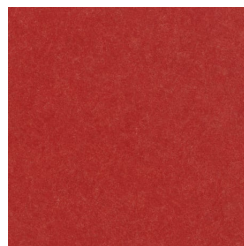
Mandarin



Meadow



Midnight



Ochre



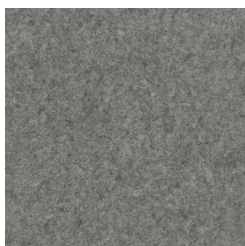
Olive



Parchment



Pebble



Pewter



Saffron



Sky



Smoke

ETCH TILES FLUTED

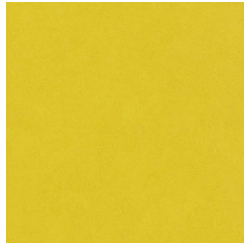
Acoustics » Tiles



Slate



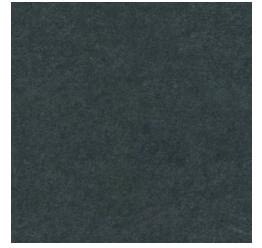
Storm



Sunshine



Tar



Twilight

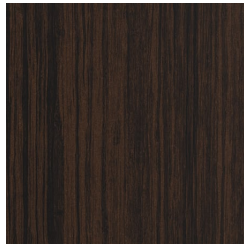
Zintra Timber



Eucalyptus



Ironbark



Merbau



Spotted Gum