

TEXTURE PANEL TRAPPE

Acoustics » Acoustic Panels



Brand: **Zintra**

Collections: **Texture Panel**

Applications: **Ceilings, Walls**

1300 306 399

info@baresque.com.au

baresque.com.au

1 of 6

TEXTURE PANEL TRAPPE

Acoustics » Acoustic Panels



Texture Panel Trappe Detail

TEXTURE PANEL TRAPPE

Acoustics » Acoustic Panels

Innovative 3-dimensional Zintra Texture Panel designs, from sleek lines to captivating patterns. Trappe adds depth and style while enhancing acoustics. Ideal for modern or classic settings in bustling public spaces.

✓ Acoustic

✓ Bleach Cleanable

✓ Easy Install

✓ Easy Clean

Description

Zintra Textures offers subtle and engaging 3-dimensional panel designs. Each design incorporates aspects that reduce echoes by changing the angle of sound reflecting off the surface. It makes them ideal for noisy public spaces that need a little flair.

Zintra Acoustic Textures not only highlight the fantastic acoustic qualities of Zintra Acoustic Panel, but also the incredible fabrication capabilities Zintra has to offer. Zintra's wide range of designs and colours slip easily into classic or modern settings.

Trappe: The interplay of lines and angles adds a sense of depth and dimension. Create architectural intrigue with enigmatic trapdoor-like shapes.

The subtle 3-dimensional relief of these designs not only adds dimension to your surrounding but also provides excellent acoustics. Zintra Textures, slip seamlessly into classic or modern settings, adding a touch of innovation and sophistication to noisy public spaces.

Available in 15 designs

Carre | Cercles | Corbe | Diamont | Droit | Echelle | Etoile | Hexagone | Nenuphar | Paume | Signe | Tessan | Tissage | Trappe | Vague

Enhance your space with the innovative style of Zintra Textures.

Not suitable as a free standing product.

Composition

Zintra Acoustic Panel - 100% Solution Dyed (Colour Through) Polyester

- 12mm (1/2") - Density 2.4 kg /m² 0.5 lb/ft²
- 24mm (1") - Density 3.6 kg /m² 0.75 lb/ft²

Sustainability

Zintra is made from 100% recyclable materials.

- 60% post-consumer recycled content from PET bottles.
- 35% pre-consumer recycled content from PET chips
- 5% polylactic acid (PLA)

Dimensions

1219mm (48") x 2743mm (108") x 24mm (1")

TEXTURE PANEL TRAPPE

Acoustics » Acoustic Panels

Fire Rating ASTM-E84 – Class A classification
AS ISO 9705 – 2003 – Group 1 classification
EN-13501 – B-s2-d0 classification

Supplied As Zintra Textures panel in selected pattern.

Assembly & Delivery Ships Flat Pack

Go to the Technical Documents and download the Installation Guide for more details.

To install with an air gap, Zintra Texture Panel must be laminated to a solid backer. (MDF etc., to allow the push outs to extend from the panel) to allow for the air gap.

Suggested Installation Go to Technical Documents and download the Installation Guide for more details.

Care Instructions Vacuum to remove dust.

Dab Zintra with a damp clean cloth and mild solution of liquid detergent and warm water. Repeat using only clean water, then pat dry with a lint free cloth.

For difficult stains, use a solution of household bleach (10% bleach / 90% water). To remove the bleach, repeat using a clean, water dampened cloth, then pat dry.

Always test in an inconspicuous area first and if you don't see the expected results, contact us.

Warranty Visit FAQ for more details.

Customisable The Zintra Acoustic Solutions range is customisable to your project. Please get in touch with your local contact for details.

Additional Comments NRC 0.45-0.90

How to Specify 1. Select Texture design
2. Select Zintra Colour

TEXTURE PANEL TRAPPE

Acoustics » Acoustic Panels

Colour & Finish Options

Zintra 12mm Solid PET



Bark



Brick



Cadet



Chambray



Cobalt



Ecru



Elderberry



Fossil



Frost



Grass



Greige



Ivory



Linen



Malachite



Mandarin



Meadow



Midnight



Ochre



Olive



Parchment



Pebble



Pewter



Saffron



Sky



Smoke

TEXTURE PANEL TRAPPE

Acoustics » Acoustic Panels



Slate



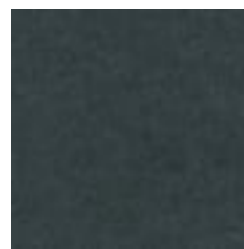
Storm



Sunshine



Tar



Twilight