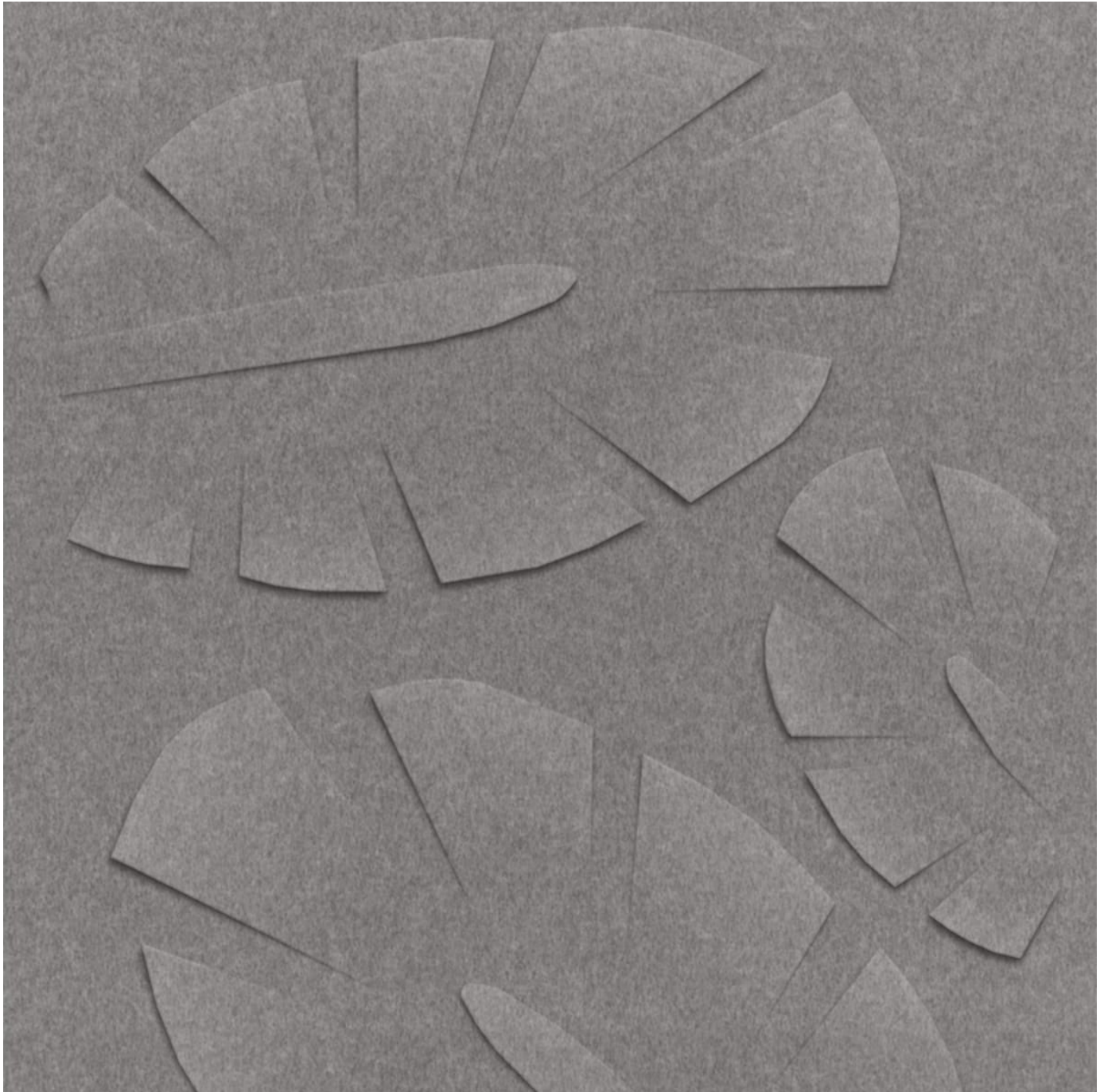


# TEXTURE PANEL PAUME

Acoustics » Acoustic Panels

---



Brand: **Zintra**

Collections: **Texture Panel**

Applications: **Ceilings, Walls**

1300 306 399

[info@baresque.com.au](mailto:info@baresque.com.au)

[baresque.com.au](http://baresque.com.au)

1 of 6

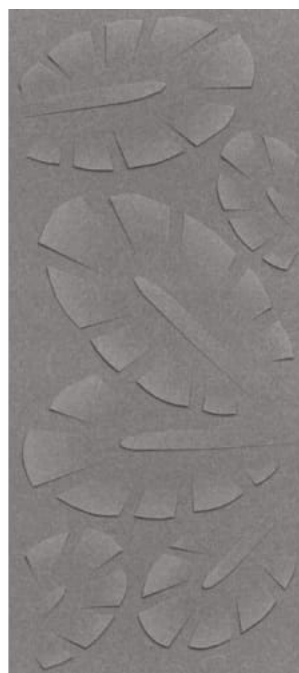
# TEXTURE PANEL PAUME

**Acoustics** » Acoustic Panels

---



Texture Paume Detail 2



Texture Paume Panel

# TEXTURE PANEL PAUME

Acoustics » Acoustic Panels

Innovative 3-dimensional Zintra Texture Panel designs, from sleek lines to captivating patterns. Paume adds depth and style while enhancing acoustics. Ideal for modern or classic settings in bustling public spaces.

✓ Acoustic

✓ Bleach Cleanable

✓ Easy Install

✓ Easy Clean

## Description

Zintra Textures offers subtle and engaging 3-dimensional panel designs. Each design incorporates aspects that reduce echoes by changing the angle of sound reflecting off the surface. It makes them ideal for noisy public spaces that need a little flair.

Zintra Acoustic Textures not only highlight the fantastic acoustic qualities of Zintra Acoustic Panel, but also the incredible fabrication capabilities Zintra has to offer. Zintra's wide range of designs and colours slip easily into classic or modern settings.

**Paume:** Curved lines and organic forms evoke a sense of natural beauty and relaxation to transform your space into an oasis. Tropical sophistication with palm-like motifs.

The subtle 3-dimensional relief of these designs not only adds dimension to your surrounding but also provides excellent acoustics. Zintra Textures, slip seamlessly into classic or modern settings, adding a touch of innovation and sophistication to noisy public spaces.

### Available in 15 designs

Carre | Cercles | Corbe | Diamont | Droit | Echelle | Etoile | Hexagone | Nenuphar | Paume | Signe | Tessan | Tissage | Trappe | Vague

Enhance your space with the innovative style of Zintra Textures.

Not suitable as a free standing product.

## How to Specify

1. Select Texture design
2. Select Zintra Colour

## Composition

Zintra Acoustic Panel - 100% Solution Dyed (Colour Through) Polyester

- 12mm (1/2") - Density 2.4 kg /m<sup>2</sup> 0.5 lb/ft<sup>2</sup>
- 24mm (1" ) - Density 3.6 kg /m<sup>2</sup> 0.75 lb/ft<sup>2</sup>

# TEXTURE PANEL PAUME

Acoustics » Acoustic Panels

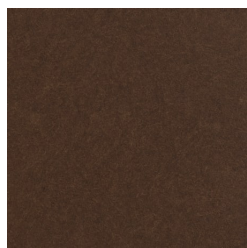
Sustainability	<p>Zintra is made from 100% recyclable materials.</p> <ul style="list-style-type: none"><li>• 60% post-consumer recycled content from PET bottles.</li><li>• 35% pre-consumer recycled content from PET chips</li><li>• 5% polylactic acid (PLA)</li></ul>
Dimensions	1219mm (48") x 2743mm (108") x 24mm (1")
Fire Rating	<p>ASTM-E84 – Class A classification AS ISO 9705 – 2003 – Group 1 classification EN-13501 – B-s2-d0 classification</p>
Supplied As	Zintra Textures panel in selected pattern.
Assembly & Delivery	<p>Ships Flat Pack</p> <p>Go to the Technical Documents and download the Installation Guide for more details.</p> <p>To install with an air gap, Zintra Texture Panel must be laminated to a solid backer. (MDF etc., to allow the push outs to extend from the panel) to allow for the air gap.</p>
Suggested Installation	Go to Technical Documents and download the Installation Guide for more details.
Care Instructions	<p>Vacuum to remove dust.</p> <p>Dab Zintra with a damp clean cloth and mild solution of liquid detergent and warm water. Repeat using only clean water, then pat dry with a lint free cloth.</p> <p>For difficult stains, use a solution of household bleach (10% bleach / 90% water). To remove the bleach, repeat using a clean, water dampened cloth, then pat dry.</p> <p>Always test in an inconspicuous area first and if you don't see the expected results, contact us.</p>
Warranty	Visit FAQ for more details.
Customisable	The Zintra Acoustic Solutions range is customisable to your project. Please get in touch with your local contact for details.
Additional Comments	NRC 0.45-0.90

# TEXTURE PANEL PAUME

Acoustics » Acoustic Panels

## Colour & Finish Options

Zintra 12mm Solid PET



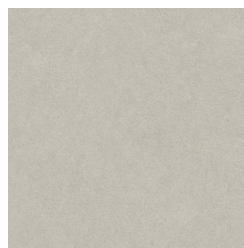
Bark



Brick



Cadet



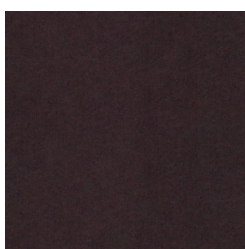
Chambray



Cobalt



Ecru



Elderberry



Fossil



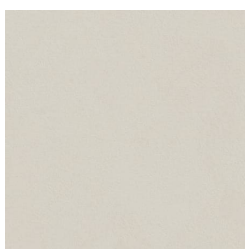
Frost



Grass



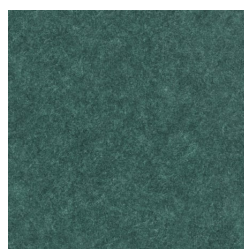
Greige



Ivory



Linen



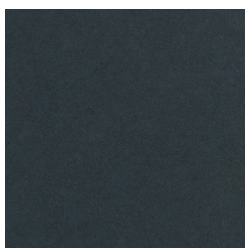
Malachite



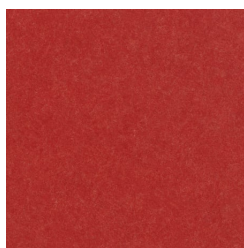
Mandarin



Meadow



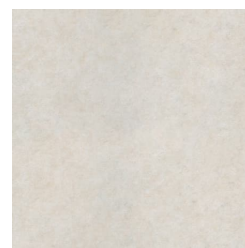
Midnight



Ochre



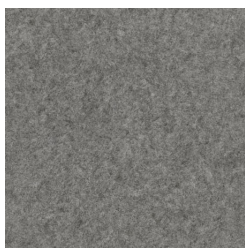
Olive



Parchment



Pebble



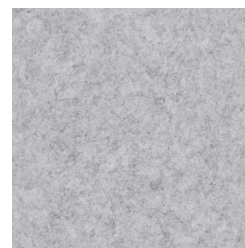
Pewter



Saffron



Sky



Smoke

1300 306 399

info@baresque.com.au

**baresque.com.au**

5 of 6



# TEXTURE PANEL PAUME

Acoustics » Acoustic Panels



Slate



Storm



Sunshine



Tar



Twilight