

LAYERS PANEL 3D

Acoustics » Acoustic Panels



Brand: **Zintra**

Collections: **Layers Panel**

Applications: **Walls**

1300 306 399

info@baresque.com.au

baresque.com.au

1 of 6

LAYERS PANEL 3D

Acoustics » Acoustic Panels



3D Layers Panel Hospitality



3D Layers Panel Commercial



3D Layers Panel Reception Detail



Layers 3D Panel Detail

LAYERS PANEL 3D

Acoustics » Acoustic Panels

Create a personalized 3D acoustic masterpiece with Zintra Layers. Panels that are handmade with care, choose from 30 Colours which are cut into strips and applied to a Zintra backing panel.

| | |
|----------------|---|
| Description | <p>Elevate your space with the perfect blend of superior acoustics and unique character, courtesy of Zintra Layers 3D.</p> <p>Discover the innovative technique behind Zintra Layers, where vibrant strips of Colour are meticulously layered onto a Zintra Acoustic panel backer, offering a versatile solution for your acoustic design needs. Whether you're craving a subtle infusion or a bold explosion of Colour, achieve unparalleled acoustics and individuality effortlessly.</p> <p>For those seeking the pinnacle of acoustic performance. Zintra Layers 3D craft a handmade 3-dimensional surface that not only reduces echoes but achieves an impressive NRC of up to 1.0 with an air gap. Elevate your space to new heights with Zintra 3D Layers.</p> |
| How to Specify | <ol style="list-style-type: none">1. Select Layers or Layers 3D design2. Select Zintra Colour |
| Composition | <p>Zintra Acoustic Panel - 100% Solution Dyed (Colour Through) Polyester</p> <p>12mm (1/2") - Density 2.4 kg /m² 0.5 lb/ft²</p> |
| Sustainability | <p>Zintra is made from 100% recyclable materials.</p> <ul style="list-style-type: none">• 60% post-consumer recycled content from PET bottles.• 35% pre-consumer recycled content from PET chips• 5% polylactic acid (PLA) |
| Dimensions | <p>2745mm (108") x 1207mm (47.5")</p> |
| Fire Rating | <p>ASTM-E84 – Class A classification AS ISO 9705 – 2003 – Group 1 classification EN-13501 – B-s2-d0 classification</p> |
| Supplied As | <p>1 x Layer Panel in selected Colour/s</p> |

LAYERS PANEL 3D

Acoustics » Acoustic Panels

| | |
|------------------------|--|
| Assembly & Delivery | <p>Ships Assembled ready for installation. Refer Installation instructions.</p> <p>Recommended 2 People assembly</p> <p>Go to the Technical Documents and download the Installation Guide for more details.</p> |
| Suggested Installation | <p>Go to Technical Documents and download the Installation Guide for more details.</p> |
| Care Instructions | <p>Vacuum to remove dust.</p> <p>Dab Zintra with a damp clean cloth and mild solution of liquid detergent and warm water. Repeat using only clean water, then pat dry with a lint free cloth.</p> <p>For difficult stains, use a solution of household bleach (10% bleach / 90% water). To remove the bleach, repeat using a clean, water dampened cloth, then pat dry.</p> <p>Always test in an inconspicuous area first and if you don't see the expected results, contact us.</p> |
| Warranty | <p>Visit FAQ for more details.</p> |
| Customisable | <p>The Zintra Acoustic Solutions range is customisable to your project. Please get in touch with your local contact for details.</p> |
| Additional Comments | <p>NRC Up to 1.0</p> |

LAYERS PANEL 3D

Acoustics » Acoustic Panels

Colour & Finish Options

Zintra 12mm Solid PET



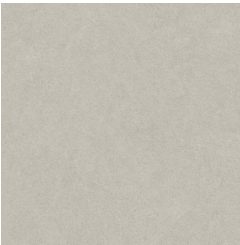
Bark



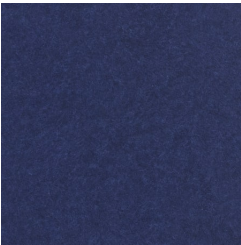
Brick



Cadet



Chambray



Cobalt



Ecru



Elderberry



Fossil



Frost



Grass



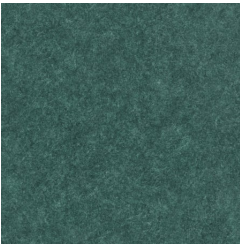
Greige



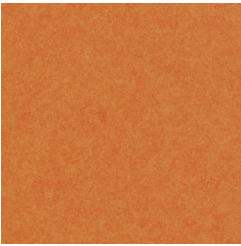
Ivory



Linen



Malachite



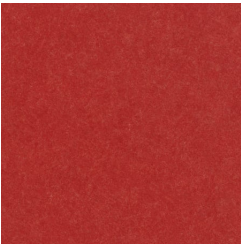
Mandarin



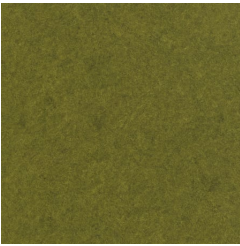
Meadow



Midnight



Ochre



Olive



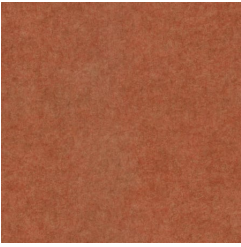
Parchment



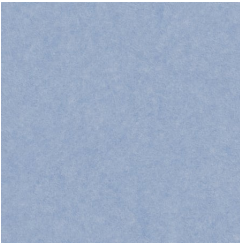
Pebble



Pewter



Saffron



Sky



Smoke

LAYERS PANEL 3D

Acoustics » Acoustic Panels



Slate



Storm



Sunshine



Tar



Twilight