

RIPPLE MAKING WAVES

Fabrics » Woven Fabrics



Brand: **Crypton**

Applications: **Upholstery**

1300 306 399

info@baresque.com.au

baresque.com.au

1 of 4

RIPPLE MAKING WAVES

Fabrics » Woven Fabrics

Ripple can be described as soft flow of small waves to create movement, woven with chenille yarns.

- ✓ Bleach Cleanable
- ✓ Greenguard Gold Certified
- ✓ Seaqual Yarn
- ✓ Moisture Barrier
- ✓ PFAS Free

Description	Making Waves is a collection crafted from ocean plastic recovered through a partnership with SEAQUAL INITIATIVE. This initiative unites NGOs, fishermen, and various stakeholders to clean our oceans.
Composition	Content face: 59% polyester, 23% Seaqual Polyester, 18% Recycled Post Consumer Polyester
Environmental Info	<p>Greenguard Certifications contributes towards LEED credits for low-emitting furniture and ensures compliance with Business and Institutional Furniture Manufacturers Association (BIFMA) X7.1 standard and BIFMA e3 credit 7.6.1.</p> <p>Greenguard Gold Certification standard includes:</p> <p>* Health-based criteria for additional chemicals and requires lower total VOC emissions levels to help ensure that products are acceptable for use in environments like schools and healthcare facilities.</p> <p>* Products that also comply with requirements of the state of California’s Department of Public Health (CDPH) “Standard Method for the Test and Evaluation of Volatile Organic Chemical Emissions from Indoor Sources Using Environmental Chambers, Version 1.2 (2017)” (also know as California Section 01350).</p> <p>* Products that are compliant with the BIFMA X7.1 standard and BIFMA e3 credits 7.6.1, 7.6.2, and 7.6.3.</p>
Pattern Repeat Size	40cm V / 37cm H
Roll Size	140cm x 55m - Available by the lineal metre.
Abrasion	105,000 Double Rubs (Wyzenbeek)
Fire Rating	This product can be treated with a fire retardant that will ensure it meets Australian Standard 1530.3. Contact Baresque for details.
Lead Time	<ul style="list-style-type: none">• 2-weeks (approx.) from Wednesday, subject to stock availability.• Additional 1-week for Western Australia.• Express delivery is available subject to a surcharge. Contact Baresque for details and pricing.

RIPPLE MAKING WAVES

Fabrics » Woven Fabrics

Care Instructions

Always use a clean, white, soft cloth.

Prepare a mixture of 1/3 Napisan and 2/3 Fab. Combine the mixture with water to make a paste about the consistency of soft margarine i.e. not too runny. Apply using a soft bristle brush. Leave for 10 minutes.

Use a brush and clean, warm water to remove the paste being sure to renew the water so that it remains clean.

Never use stiff bristles or wire brushes, as they may damage the fabric. To prevent soil build-up, frequent vacuuming is recommended.

Using a cloth to pat dry will help eliminate watermarks.

For more difficult stains, dampen a soft white cloth with a solution of household bleach (10% bleach / 90% water). Rub gently. Rinse with a water dampened cloth to remove bleach concentration.

Always test in an inconspicuous area first. If care instructions don't deliver the expected results, cease cleaning method immediately and contact Baresque for assistance.

Warranty

2-year warranty. Visit baresque.com.au/warranty for complete details.

Additional Comments

UV Resistance: Colorfastness to Light AATCC 16.3 - Grade 4, 40 hour

RIPPLE MAKING WAVES

Fabrics » Woven Fabrics

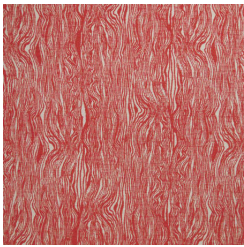
Colour & Finish Options

COLOURWAY CARD

COLOURWAY CARD



103 CALYPSO



146 POPPY



202 VERDE



254 CHARTREUSE



363 CAPRI



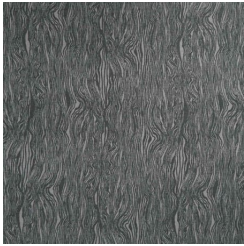
405 HENNA



505 DAISY



901 SHADOW



903 SMOKY