

CLOUDS DOME CONCAVE

Acoustics » Acoustic Ceiling Features



Brand: **Zintra**

Collections: **Clouds**

Applications: **Ceilings**

1300 306 399

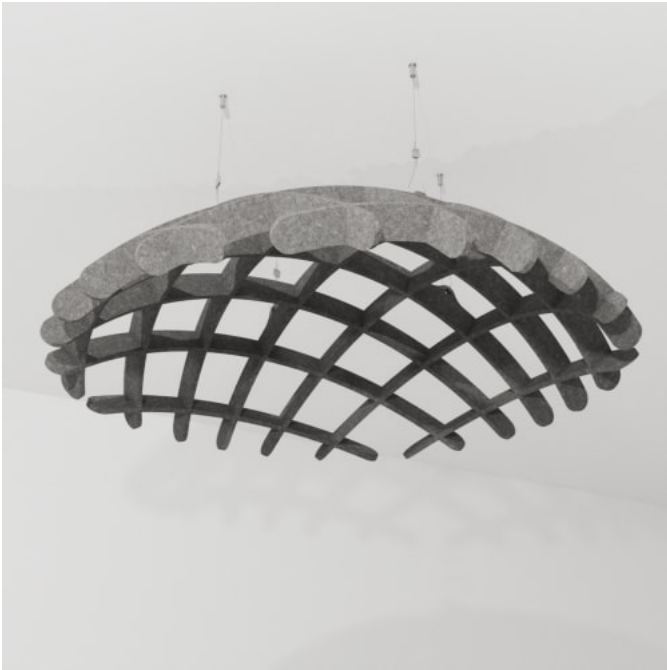
info@baresque.com.au

baresque.com.au

1 of 6

CLOUDS DOME CONCAVE

Acoustics » Acoustic Ceiling Features



Clouds Dome Concave Detail

CLOUDS DOME CONCAVE

Acoustics » Acoustic Ceiling Features

A 3-dimensional floating design. Zintra Clouds Dome Concave creates a stunning easy to assemble ceiling feature.

✓ Acoustic

✓ Bleach Cleanable

✓ Easy Clean

✓ Easy Install

Description

Zintra Acoustic Clouds are available in a unique range of shapes and forms constructed from pressure fit interlocking Zintra profiles. Easy to assemble and install, clouds will add drama to your space whilst simultaneously improving acoustics by utilising Zintra's powerful sound absorption properties.

Dome Concave: Round dome-shaped concave acoustic grid shaped cloud.

Available in 12 other great designs and multiple sizes

Blanchard | Clochette | Dome Convex | Drante | Giffard | Long Dome Concave | Long Dome Convex | Square | Stratus | Turbine | Warp | YooFoe

Longer Cables, multi-colour and Digital Print available for an additional fee.

How to Specify

1. Select Design
2. Select Size
3. Select Zintra Colour

Composition

Zintra Acoustic Panel - 100% Solution Dyed (Colour Through) Polyester
12mm (1/2") - Density 2.4 kg /m² 0.5 lb/ft²

Sustainability

Zintra is made from 100% recyclable materials.

- 60% post-consumer recycled content from PET bottles.
- 35% pre-consumer recycled content from PET chips
- 5% polylactic acid (PLA)

Dimensions

Dome Concave: 1133mm (44.6") w x 1133mm (44.6") d x 300mm (11.8") h

Fire Rating

ASTM-E84 – Class A classification
AS ISO 9705 – 2003 – Group 1 classification
EN-13501 – B-s2-d0 classification

CLOUDS DOME CONCAVE

Acoustics » Acoustic Ceiling Features

Supplied As Flat Pack
Clouds include Adjustable
Cable Kit

Assembly & Delivery Cloud components supplied flat pack.
Assembled cloud is then suspended from the ceiling using hanging hardware supplied.
Recommended 2 People assembly
Go to the Technical Documents and download the Installation Guide for more details.

Suggested Installation Go to Technical Documents and download the Installation Guide for more details.

Care Instructions Vacuum to remove dust.
Dab Zintra with a damp clean cloth and mild solution of liquid detergent and warm water. Repeat using only clean water, then pat dry with a lint free cloth.
For difficult stains, use a solution of household bleach (10% bleach / 90% water). To remove the bleach, repeat using a clean, water dampened cloth, then pat dry.
Always test in an inconspicuous area first and if you don't see the expected results, contact us.

Warranty Visit FAQ for more details.

Customisable The Zintra Acoustic Solutions range is customisable to your project. Please get in touch with your local contact for details.

Additional Comments NRC Rating

- Without Air Gap: Up to 0.95
- With 24" (610mm) Air Gap: Up to 1.00

CLOUDS DOME CONCAVE

Acoustics » Acoustic Ceiling Features

Colour & Finish Options

Zintra 12mm Solid PET



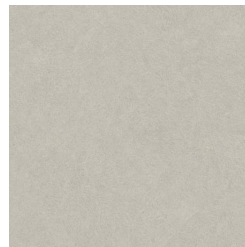
Bark



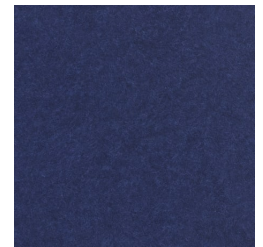
Brick



Cadet



Chambray



Cobalt



Ecru



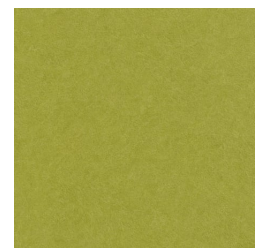
Elderberry



Fossil



Frost



Grass



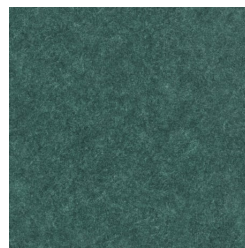
Greige



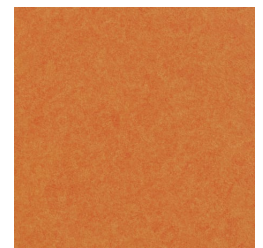
Ivory



Linen



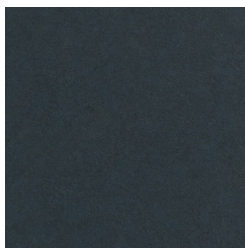
Malachite



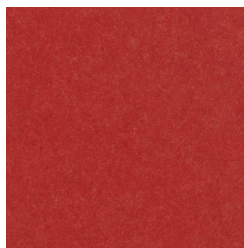
Mandarin



Meadow



Midnight



Ochre



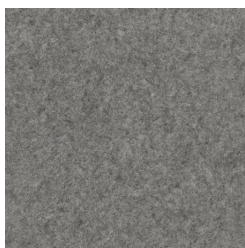
Olive



Parchment



Pebble



Pewter



Saffron



Sky



Smoke

CLOUDS DOME CONCAVE

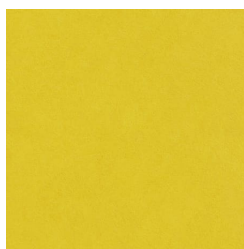
Acoustics » Acoustic Ceiling Features



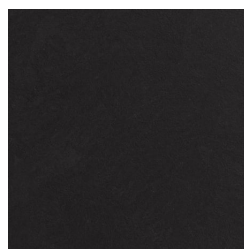
Slate



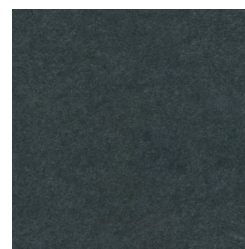
Storm



Sunshine



Tar

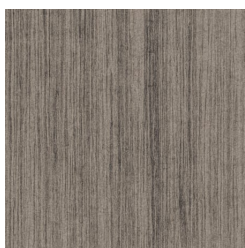


Twilight

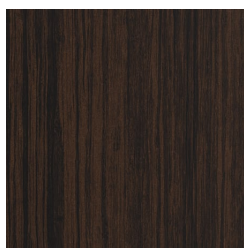
Zintra Timber



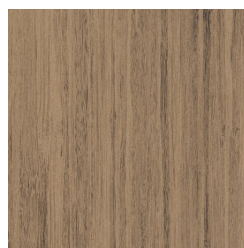
Eucalyptus



Ironbark



Merbau



Spotted Gum