

CLOUDS STRATUS

Acoustics » Acoustic Ceiling Features



Brand: **Zintra**

Collections: **Clouds**

Applications: **Ceilings**

1300 306 399

info@baresque.com.au

baresque.com.au

1 of 6

CLOUDS STRATUS

Acoustics » Acoustic Ceiling Features



Clouds Stratus Detail

CLOUDS STRATUS

Acoustics » Acoustic Ceiling Features

A 3-dimensional floating design. Zintra Clouds Stratus creates a stunning easy to assemble ceiling feature.

✓ Acoustic

✓ Bleach Cleanable

✓ Easy Clean

✓ Easy Install

Description

Zintra Acoustic Clouds are available in a unique range of shapes and forms constructed from pressure fit interlocking Zintra profiles. Easy to assemble and install, clouds will add drama to your space whilst simultaneously improving acoustics by utilising Zintra's powerful sound absorption properties.

Stratus: Sloping cloud-shaped acoustic grid, with one end higher than the other end.

Available in 12 other great designs and multiple sizes

Blanchard | Clochette | Dome Concave | Dome Convex | Drante | Giffard | Long Dome Concave | Long Dome Convex | Square | Turbine | Warp | YooFoe

Longer Cables, multi-colour and Digital Print available for an additional fee.

How to Specify

1. Select Design
2. Select Size
3. Select Zintra Colour

Composition

Zintra Acoustic Panel - 100% Solution Dyed (Colour Through) Polyester

12mm (1/2") - Density 2.4 kg /m² 0.5 lb/ft²

Sustainability

Zintra is made from 100% recyclable materials.

- 60% post-consumer recycled content from PET bottles.
- 35% pre-consumer recycled content from PET chips
- 5% polylactic acid (PLA)

Dimensions

- **Stratus:** 711mm (28") w x 1398mm (55") l x 290mm (11.5") h

Fire Rating

ASTM-E84 – Class A classification
AS ISO 9705 – 2003 – Group 1 classification
EN-13501 – B-s2-d0 classification

CLOUDS STRATUS

Acoustics » Acoustic Ceiling Features

Supplied As	Flat Pack Clouds include Adjustable Cable Kit
Assembly & Delivery	Cloud components supplied flat pack. Assembled cloud is then suspended from the ceiling using hanging hardware supplied. Recommended 2 People assembly Go to the Technical Documents and download the Installation Guide for more details.
Suggested Installation	Go to Technical Documents and download the Installation Guide for more details.
Care Instructions	Vacuum to remove dust. Dab Zintra with a damp clean cloth and mild solution of liquid detergent and warm water. Repeat using only clean water, then pat dry with a lint free cloth. For difficult stains, use a solution of household bleach (10% bleach / 90% water). To remove the bleach, repeat using a clean, water dampened cloth, then pat dry. Always test in an inconspicuous area first and if you don't see the expected results, contact us.
Warranty	Visit FAQ for more details.
Customisable	The Zintra Acoustic Solutions range is customisable to your project. Please get in touch with your local contact for details.
Additional Comments	NRC Rating <ul style="list-style-type: none">• Without Air Gap: Up to 0.95• With 24" (610mm) Air Gap: Up to 1.00

CLOUDS STRATUS

Acoustics » Acoustic Ceiling Features

Colour & Finish Options

Zintra 12mm Solid PET



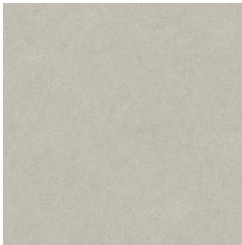
Bark



Brick



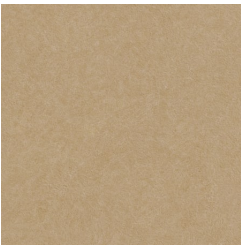
Cadet



Chambray



Cobalt



Ecru



Elderberry



Fossil



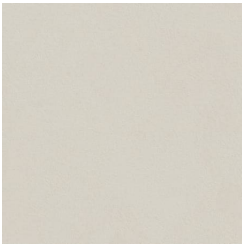
Frost



Grass



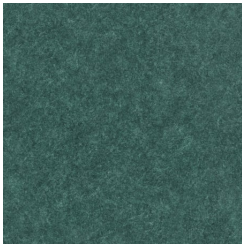
Greige



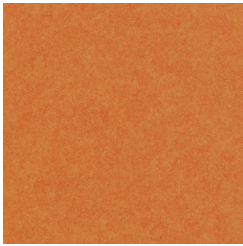
Ivory



Linen



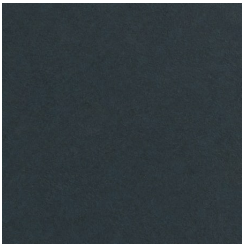
Malachite



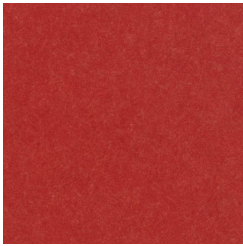
Mandarin



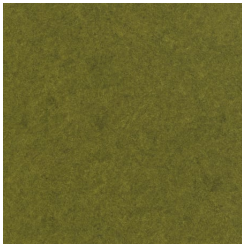
Meadow



Midnight



Ochre



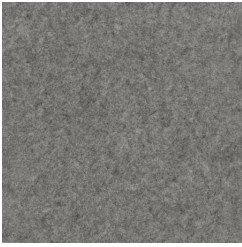
Olive



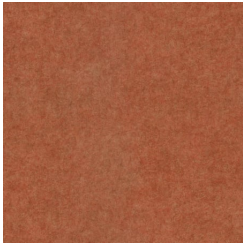
Parchment



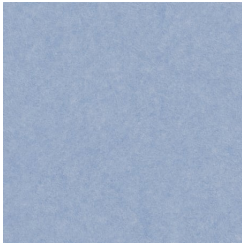
Pebble



Pewter



Saffron



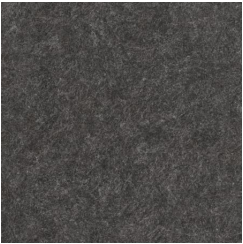
Sky



Smoke

CLOUDS STRATUS

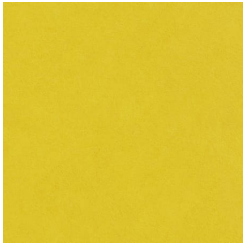
Acoustics » Acoustic Ceiling Features



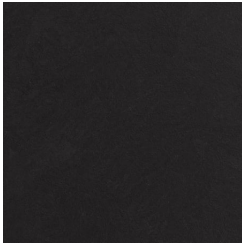
Slate



Storm



Sunshine



Tar



Twilight

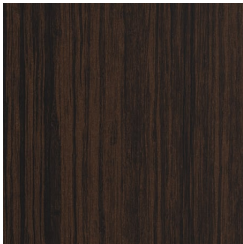
Zintra Timber



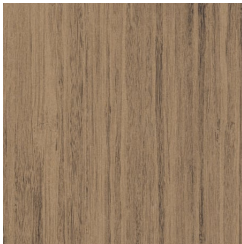
Eucalyptus



Ironbark



Merbau



Spotted Gum