

# 3D PANEL PEAKS

Acoustics » Acoustic Panels



Brand: **Zintra**

Collections: **3D Panel**

Applications: **Walls**

# 3D PANEL PEAKS

Acoustics » Acoustic Panels

---



3D Panel Peaks Detail

# 3D PANEL PEAKS

Acoustics » Acoustic Panels

Zintra 3D Panel Peaks offer both an intriguing design element and functional acoustic enhancement. Add depth and design to flat surfaces which absorb sound and cancel out soundwaves.

✓ Acoustic

✓ Bleach Cleanable

✓ Easy Clean

✓ Easy Install

## Description

Seamlessly joined, our 3D Wall Panels offer both an intriguing design element and functional acoustic enhancement for straight or curved walls. These narrow panels boast a small pattern repeat, facilitating easy adjustment for wall-to-wall fitting without the need for custom drawings.

Our **Peaks** design resembles the peaks of mountains. This panel features a series of angular protrusions arranged in a symmetrical pattern, creating a dynamic and textured surface. Its narrow profile and intricate design make it suitable for a variety of applications, from modern offices and conference rooms to contemporary residential settings.

Not only does the Peaks Panel contribute to the aesthetics of a space, but it also serves a functional purpose by enhancing sound absorption and cancelling out soundwaves. Its sculptural form adds depth and dimension to flat surfaces, transforming them into visually captivating focal points.

Also available in Batten 2, Batten 4 and Batten 6

Our Batten design is inspired by the timeless appeal of the board and batten pattern. Designed to bring a touch of architectural elegance and visual interest to your space. Featuring alternating wide boards and vertical battens, this captivating pattern creates a dynamic and textured surface. Its classic yet versatile design effortlessly adds a sense of depth and character to any project.

Not suitable as a free standing product.

## How to Specify

1. Select Design
2. Select Zintra Colour

## Composition

Zintra Acoustic Panel - 100% Solution Dyed (Colour Through) Polyester  
12mm (1/2") -Density 2.4 kg /m<sup>2</sup> 0.5 lb/ft<sup>2</sup>

## Sustainability

Zintra is made from 100% recyclable materials.

- 60% post-consumer recycled content from PET bottles.
- 35% pre-consumer recycled content from PET chips
- 5% polylactic acid (PLA)

# 3D PANEL PEAKS

Acoustics » Acoustic Panels

---

## Dimensions

### Peaks:

- 3 strips / set, 2.4m<sup>2</sup> (26.3SF)
- 305mm (12") w x 2745mm (108.1") h x 40mm (1.6") d / strip

\*\*Please note: Visible width 289mm (11.3")

---

## Fire Rating

ASTM-E84 – Class A classification  
AS ISO 9705 – 2003 – Group 1 classification  
EN-13501 – B-s2-d0 classification

---

## Supplied As

- Peaks | 3 Strips (Set) 2.4m<sup>2</sup> (26.3SF)
- 

## Assembly & Delivery

Ships Flat Packed. Refer Installation instructions.

Recommended 2 People assembly

Go to the Technical Documents and download the Installation Guide for more details.

---

## Suggested Installation

Go to Technical Documents and download the Installation Guide for more details.

---

## Care Instructions

Vacuum to remove dust.

Dab Zintra with a damp clean cloth and mild solution of liquid detergent and warm water. Repeat using only clean water, then pat dry with a lint free cloth.

For difficult stains, use a solution of household bleach (10% bleach / 90% water). To remove the bleach, repeat using a clean, water dampened cloth, then pat dry.

Always test in an inconspicuous area first and if you don't see the expected results, contact us.

---

## Warranty

Visit FAQ for more details.

---

## Customisable

Zintra Acoustic Panel - 100% Solution Dyed (Colour Through) Polyester

12mm (1/2") - Density 2.4 kg /m<sup>2</sup> 0.5 lb/ft<sup>2</sup>

---

## Additional Comments

NRC 0.45

---

# 3D PANEL PEAKS

Acoustics » Acoustic Panels

## Colour & Finish Options

Zintra 12mm Solid PET



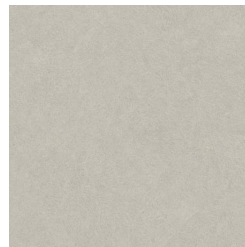
Bark



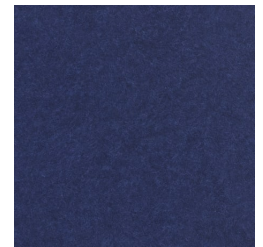
Brick



Cadet



Chambray



Cobalt



Ecru



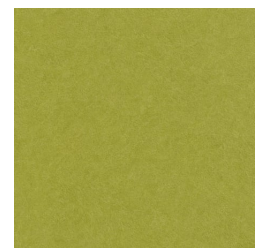
Elderberry



Fossil



Frost



Grass



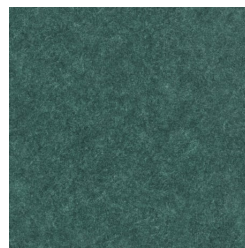
Greige



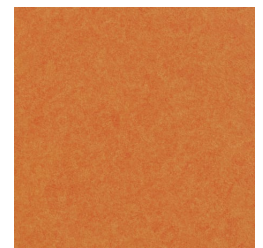
Ivory



Linen



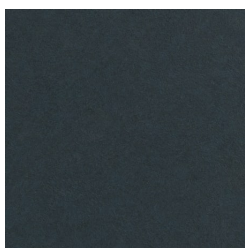
Malachite



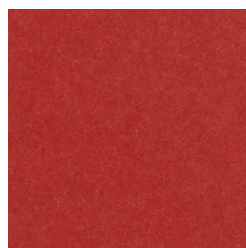
Mandarin



Meadow



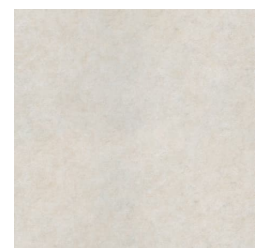
Midnight



Ochre



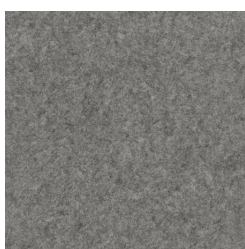
Olive



Parchment



Pebble



Pewter



Saffron



Sky



Smoke

# 3D PANEL PEAKS

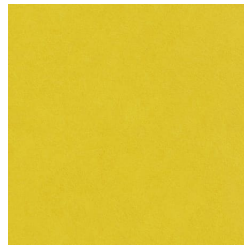
Acoustics » Acoustic Panels



Slate



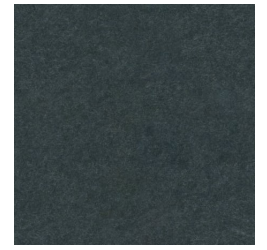
Storm



Sunshine



Tar



Twilight

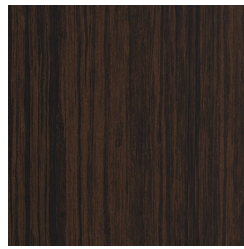
## Zintra Timber



Eucalyptus



Ironbark



Merbau



Spotted Gum