

# LINSEY STRIPE

Wallcoverings » Commercial Wallcoverings

---



Brand: **Koroseal**

Applications: **Walls**

1300 306 399

[info@baresque.com.au](mailto:info@baresque.com.au)

[baresque.com.au](http://baresque.com.au)

1 of 5

# LINSEY STRIPE

Wallcoverings » Commercial Wallcoverings

---



# LINSEY STRIPE

Wallcoverings » Commercial Wallcoverings

Linsey Stripe's charming lines add visual interest. Pairs perfectly with Linsey for a unified look.

✓ Bleach Cleanable

✓ Stain Resistant

✓ Mildew Resistant

Description	The carefully spaced lines and subtle tonal variations in Linsey Stripe create a unique pattern, adding visual interest and charm. Designed to coordinate with Linsey forming a cohesive coordinated ensemble.
Composition	Vinyl face on a fabric backing Equivalent to 20oz (452 g/m²).
Environmental Info	<p>Formaldehyde free</p> <p>Heavy metals free</p> <p>Perfluorooctanoic acid free</p> <p>No solvent inks</p> <p>Low VOC emissions. Any VOCs dissipate quickly (faster than paint) through normal ventilation and have no recognized adverse impact on indoor air quality.</p> <p>Durability means products do not need to be replaced regularly due to wear and tear and being cleanable, vinyl products are ideal for helping keep commercial environments clean of bacteria.</p> <p>Baresque will only deal with vinyl manufacturers that comply with applicable state and federal regulations, provide a factory that is safe and clean for its employees to work in, recycle scrap and inks during the manufacturing process to minimize waste related to production.</p>
Pattern Repeat Size	Not Applicable
Roll Size	132/137cm x 27.4m - Available by the lineal metre.
Fire Rating	<p>Tested in accordance with AS ISO 9705 2003 for the purpose of determining the Group Number classification as required by the Building Code of Australia for the control of fire spread on interior wall and ceiling linings.</p> <p>The result achieved was: Classification - Group 2 Specific Extinction - Less than 250m²/kg</p>
Lead Time	<ul style="list-style-type: none"><li>• 2-weeks (approx.) from Wednesday, subject to stock availability.</li><li>• Additional 1-week for Western Australia.</li><li>• Express delivery is available subject to a surcharge. Contact Baresque for details and pricing.</li></ul>

# LINSEY STRIPE

Wallcoverings » Commercial Wallcoverings

---

## Suggested Installation

Reverse hang / overlap and double cut.

Baresque recommends and supply Roman brand adhesives and primers.

---

## Care Instructions

Use cloth with any of the following in preferred order of use:

1: Clear warm water

2: Mild solution of liquid detergent and warm water

3: Isopropyl Alcohol (a.k.a. rubbing alcohol)

Remove any detergent with a clean, damp cloth. Gently pat dry.

For more difficult stains, dampen a soft white cloth with a solution of household bleach (10% bleach / 90% water). Rub gently.

Rinse with a water dampened cloth to remove bleach concentration.

Do not use solvent based or concentrated abrasive cleaning agents, lacquer thinners or nail polish remover as these may cause discolouration over a period of time.

Always test in an inconspicuous area first.

If care instructions don't deliver the expected results, cease cleaning method immediately and contact Baresque for assistance.

---

## Warranty

5-year warranty. Visit [baresque.com.au/warranty](https://baresque.com.au/warranty) for complete details.

---



# LINSEY STRIPE

Wallcoverings » Commercial Wallcoverings

## Colour & Finish Options

### COLOURWAY CARD

COLOURWAY CARD



SI21-01 LOOM STRIPE



SI21-02 FLAXEN  
STRIPE



SI21-03 OATMEAL  
STRIPE



SI21-04 MOHAIR  
STRIPE



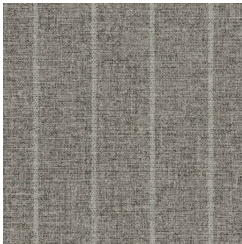
SI21-05 LINUM STRIPE



SI21-06 HOLLAND  
STRIPE



SI20-07 ANGORA  
STRIPE



SI21-08 CASHMERE  
STRIPE