

# LINSEY

Wallcoverings » Commercial Wallcoverings



Brand: **Koroseal**

Applications: **Walls**

1300 306 399

[info@baresque.com.au](mailto:info@baresque.com.au)

[baresque.com.au](http://baresque.com.au)

1 of 5

# LINSEY

Wallcoverings » Commercial Wallcoverings

---



# LINSEY

Wallcoverings » Commercial Wallcoverings

Linsey's textured design reflects its rich heritage. Delicate lines create a subtle play of colour and texture, perfect for a timeless look.

✓ **Bleach Cleanable**

✓ **Stain Resistant**

✓ **Mildew Resistant**

Description	<p>Linsey is inspired by the organic texture and delicate intricacies of its rich cultural history.</p> <p>Its unpretentious elegance and refined lines contribute to a subtle interplay of colours and textures, mirroring the organic essence in the pattern. Coordinates with Linsey Stripe.</p>
Composition	<p>Vinyl face on a fabric backing Equivalent to 20oz (452 g/m<sup>2</sup>).</p>
Environmental Info	<p>Formaldehyde free</p> <p>Heavy metals free</p> <p>Perfluorooctanoic acid free</p> <p>No solvent inks</p> <p>Low VOC emissions. Any VOCs dissipate quickly (faster than paint) through normal ventilation and have no recognized adverse impact on indoor air quality.</p> <p>Durability means products do not need to be replaced regularly due to wear and tear and being cleanable, vinyl products are ideal for helping keep commercial environments clean of bacteria.</p> <p>Baresque will only deal with vinyl manufacturers that comply with applicable state and federal regulations, provide a factory that is safe and clean for its employees to work in, recycle scrap and inks during the manufacturing process to minimize waste related to production.</p>
Pattern Repeat Size	<p>Not Applicable</p>
Roll Size	<p>132/137cm x 27.4m - Available by the lineal metre.</p>
Fire Rating	<p>Tested in accordance with AS ISO 9705 2003 for the purpose of determining the Group Number classification as required by the Building Code of Australia for the control of fire spread on interior wall and ceiling linings.</p> <p>The result achieved was: Classification - Group 2 Specific Extinction - Less than 250m<sup>2</sup>/kg</p>

Lead Time	<ul style="list-style-type: none"><li>• 2-weeks (approx.) from Wednesday, subject to stock availability.</li><li>• Additional 1-week for Western Australia.</li><li>• Express delivery is available subject to a surcharge. Contact Baresque for details and pricing.</li></ul>
-----------	---

---

Suggested Installation	<p>Reverse hang / overlap and double cut.</p> <p>Baresque recommends and supply Roman brand adhesives and primers.</p>
------------------------	--

---

Care Instructions	<p>Use cloth with any of the following in preferred order of use:</p> <ol style="list-style-type: none"><li>1: Clear warm water</li><li>2: Mild solution of liquid detergent and warm water</li><li>3: Isopropyl Alcohol (a.k.a. rubbing alcohol)</li></ol> <p>Remove any detergent with a clean, damp cloth. Gently pat dry.</p> <p>For more difficult stains, dampen a soft white cloth with a solution of household bleach (10% bleach / 90% water). Rub gently.</p> <p>Rinse with a water dampened cloth to remove bleach concentration.</p> <p>Do not use solvent based or concentrated abrasive cleaning agents, lacquer thinners or nail polish remover as these may cause discolouration over a period of time.</p> <p>Always test in an inconspicuous area first.</p> <p>If care instructions don't deliver the expected results, cease cleaning method immediately and contact Baresque for assistance.</p>
-------------------	---

---

Warranty	5-year warranty. Visit <a href="https://www.baresque.com.au/warranty">baresque.com.au/warranty</a> for complete details.
----------	--

---



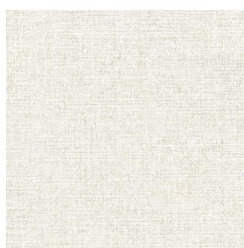
## Colour & Finish Options

### COLOURWAY CARD

COLOURWAY CARD



SE21-01 LOOM



SE21-02 COTTON



SE21-03 TABBY



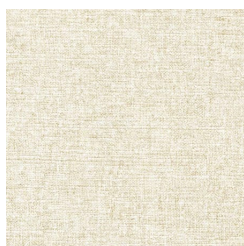
SE21-04 MANILA



SE21-05 FLEECE



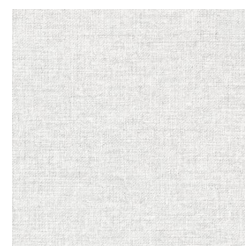
SE21-06 NETTLE



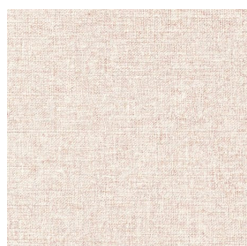
SE21-07 FLAXEN



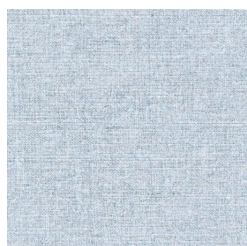
SE21-08 HOLLAND



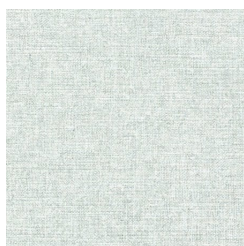
SE21-09 LINUM



SE21-10 SAFFLOWER



SE21-11 SKY



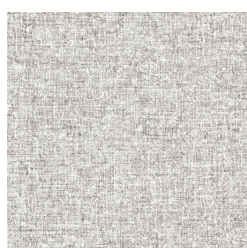
SE21-12 AGAVE



SE21-13 OATMEAL



SE21-14 CAMBRIC



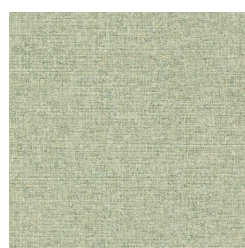
SE21-15 FLAX



SE21-16 MADDER



SE21-17 ANGORA



SE21-18 LAWN



SE21-19 JUTE



SE21-20 HEMP



SE21-21 WOOLSEY



SE21-22 MOHAIR



SE21-23 ABACA



SE21-24 CASHMERE