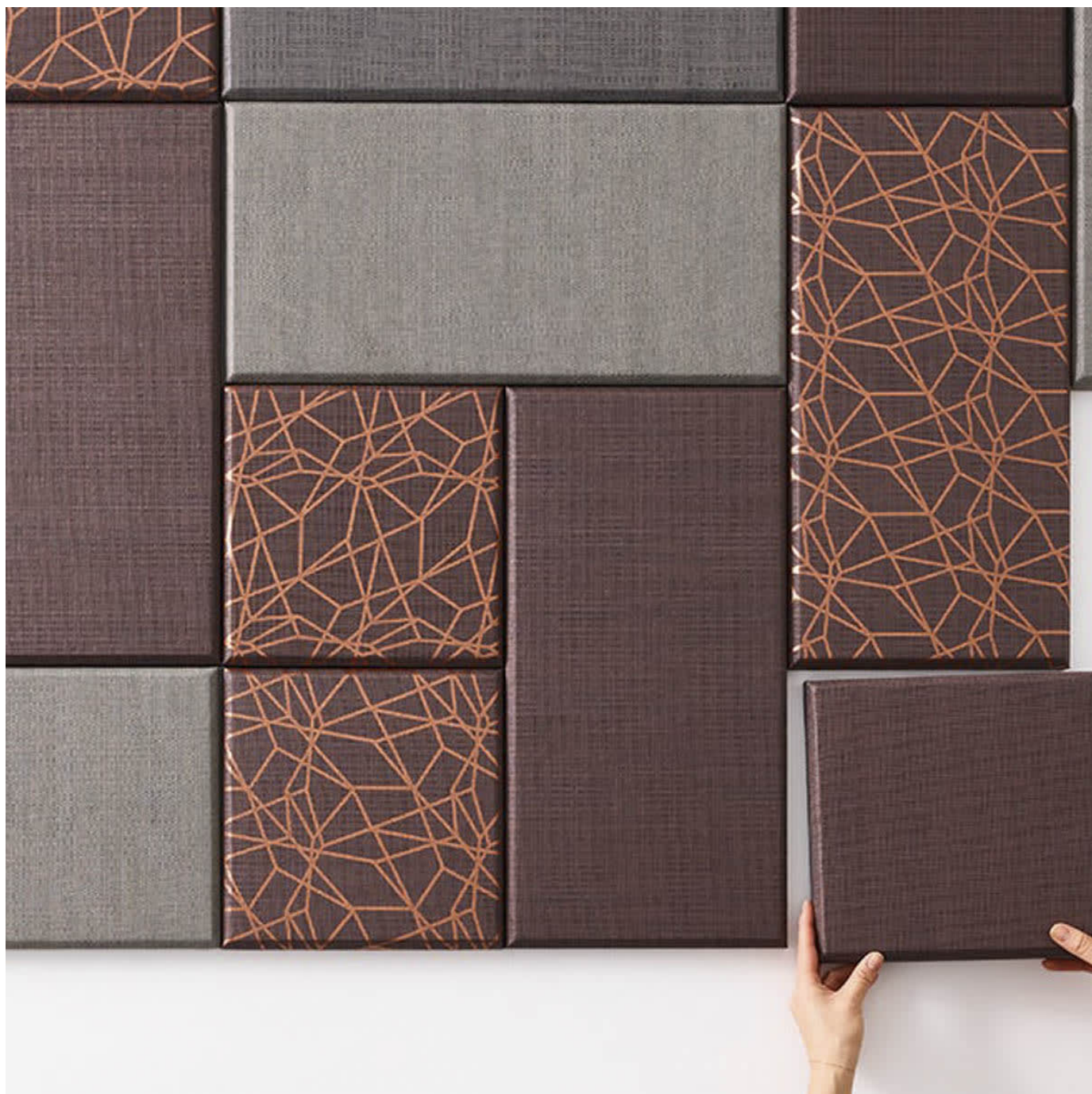


# FORGE COUTURE

Wallcoverings » Commercial Wallcoverings



Brand: **Xorel**

Applications: **Walls, Panels, Upholstery**

1300 306 399

[info@baresque.com.au](mailto:info@baresque.com.au)

[baresque.com.au](http://baresque.com.au)

1 of 8

# FORGE COUTURE

Wallcoverings » Commercial Wallcoverings

---



# FORGE COUTURE

Wallcoverings » Commercial Wallcoverings

Forge Couture is a metallic wallcoverings with the allure of crafted metal.

- ✓ Bleach Cleanable
- ✓ Stain Resistant
- ✓ Sustainable
- ✓ Cradle to Cradle Certified
- ✓ PVC-Free
- ✓ Anti-Bacterial
- ✓ Low VOC
- ✓ Living Product Certified
- ✓ Acoustic

Description	Metallic precision, Forge Couture is a glamorous take on the clarity of metalworking—the transformation of a durable material into a desirable and alluring artifact.
-------------	---

## How to Specify

### 1. Colour

2. Backing - Available Unbacked or with X-Protect Wall, X-Protect Sit or Acrylic backings.

Xorel Backings guide:

#### **X - Protect Wall**

- 100% Water repellent
- Water / Solvent / Bleach Cleanable (up to 40%). May be cleaned with hospital grade disinfectants.
- Prevents bacterial and fungal strike-through (AATCC 100, ASTM G-21-70, ASTM G-22-76)
- 132 cm wide
- Microvented

#### **Unbacked**

- Acoustically transparent (degree varies by pattern, measured by NRC test)
- Highly stable, ability to self heal, yarns can "move back" into position
- Water / Solvent / Diluted Bleach Cleanable (up to 40%). May be cleaned with hospital grade disinfectants.
- 142.2 cm wide

#### **X-Protect Sit**

- Complete Moisture barrier
- Water / Solvent / Bleach Cleanable (up to 40%)
- May be cleaned with hospital grade disinfectants
- Prevents bacterial and fungal strike-through (AATCC 100, ASTM G-21-70, ASTM G-22-76)
- 137 cm wide

---

## Composition

100% Xorel (91% Biobased PE, 9% PE)

---

# FORGE COUTURE

Wallcoverings » Commercial Wallcoverings

## Environmental Info

Xorel's high performance does not come at an environmental cost as it achieves high standards for sustainability.

All testing/certifying is done by third party independent organizations including:- Scientific Certification Systems (SCS) – Indoor Air Quality (GOLD)- Vincotte – Biobased Content (LEVELS 3/4)- USDA Biobased – Meeting Government Biobased Regulations (PREFERRED)- Cradle to Cradle Institute – Full Lifecycle Assessment (GOLD)- NSF – FACTS certification (NSF 336)

Xorel products can also help a project achieve multiple credits under LEED for commercial interiors:Material Sourcing (Rapidly Renewable Content)Indoor Air Quality (SCS Indoor Advantage Gold)Material Optimization (Cradle to Cradle Gold)Material Transparency (Healthy Product Declaration)

## Pattern Repeat Size

15cm V / 11cm H

## Roll Size

Unbacked - 142cm

X-Protect Wall - 132cm

X-Protect Sit - 137cm

Acrylic Backed - 137cm x Approx 60m - available by the lineal metre.

MINIMUM ORDER for X-Protect Sit - 5 lineal metres

MINIMUM ORDER for Acrylic Backed - 15 lineal metres

## Abrasion

No wear 100,000 double rubs

## Fire Rating

Tested in accordance with AS ISO 9705 2003 for the purpose of determining the Group Number classification required by the Building Code of Australia for the control of fire spread on interior wall and ceiling linings.

Classification - Group 1

Specific Extinction - Less than 250m<sup>2</sup>/kg

## Lead Time

- 5-weeks (approx) from Wednesday subject to stock availability.
- Additional 1-week for Western Australia.
- Unbacked 2-3 weeks.
- Express delivery is available subject to a surcharge. Contact Baresque for details and pricing

# FORGE COUTURE

Wallcoverings » Commercial Wallcoverings

---

## Suggested Installation

As a wallcovering - trim selvedge and butt join.

Download the Installation Instructions for details.

Baresque recommends and supply Roman brand adhesives and primers.

---

## Care Instructions

Xorel yarns are non-absorbent; dust and stains cannot penetrate them.

Regular maintenance will keep the fabric looking new for many years. Periodic vacuuming will remove dust that may settle between the yarns.

Most stains that dry between the yarns or on the surface can be eliminated by wiping the fabric with a cloth moistened with hot tap water. Some stains may require additional treatment. These stains can be cleaned with a variety of water or solvent based cleaners.

When using solvent based cleaners on paperbacked Xorel fabric, test on a small area first. Residue from these cleaners must be removed with hot water and a clean sponge. After cleaning, towel dry.

Hardened solids can be removed with stiff brush or a sharp-edged instrument without damaging the fabric. However, the brush or sharp instrument should not be used close to seams.

Hospital grade disinfectant cleaners can be safely used on Xorel fabrics. Always follow the directions for the specific brand being used as contact times may vary depending on the product. Diluted bleach solution (up to 40%) can also be used on Xorel for disinfecting purposes.

Always test in an inconspicuous area first. If care instructions don't deliver the expected results, cease cleaning method immediately and contact Baresque for assistance.

---

## Warranty

7-year warranty. Visit [baresque.com.au/warranty](https://baresque.com.au/warranty) for complete details.

---

## Additional Comments Why Xorel?

Beautiful, Functional and Sustainable

### DURABLE

Stands up to abuse in high-traffic areas. 200,000 to 1 million double rubs on the Wyzenbeek Abrasion Test

### Colourfast / Lightfast

Solution dyed. Colour not affected by cleaning products (including diluted bleach) or light exposure.

### Trackable

Highly tuckable yarns can "move back" into position

### EFFORTLESS MAINTANANCE

### Stain resistant yarns

Water and stains do not penetrate the extruded yarn.

### Easy to Clean

Can be aggressively cleaned with water, solvent, cleaners and diluted bleach.

### Inherently Anti-Microbial

Antibacterial, anti-fungal, anti-staph without the use of added finishes.

### SUSTAINABLE + INDUSTRY PROVEN

### 100% PVC Free

Free of PVC, chlorine, plasticizers, heavy metals and ozone depleting chemicals.

### Biobased

The world's first Biobased high-performance textile. Biobased Xorel is a true plant-based product with significantly reduced carbon footprint.

### Third Party Certified

Cradle to Cradle Gold/Silver, SCS Indoor Air Advantage Gold, NSF - Facts certification (NSF 336), Green Spec, Up to 4 Leed points, Healthy Product Declaration (HPDs) available.

---



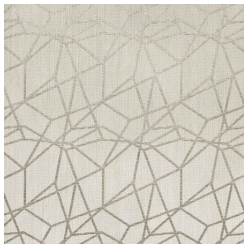
# FORGE COUTURE

Wallcoverings » Commercial Wallcoverings

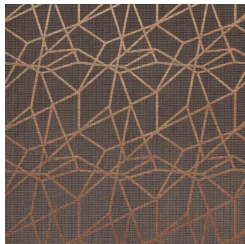
## Colour & Finish Options

### COLOURWAY CARD

COLOURWAY CARD



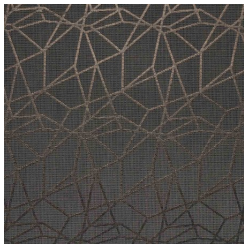
6099-608-2



6099-621-2



6099-623-2



6099-628-2