

CONCRETE PREMIUM MATERIAL

Digital Print » Premium Materials



Brand: **Zintra**

Applications: **Ceilings, Walls**

1300 306 399

info@baresque.com.au

baresque.com.au

1 of 6

CONCRETE PREMIUM MATERIAL

Digital Print » Premium Materials



CONCRETE PREMIUM MATERIAL

Digital Print » Premium Materials

Perfectly capture concretes versatile finish, sleek to rugged, a quintessential choice in modern design, blending form and function seamlessly.

- ✓ Absorbs Noise
- ✓ Acoustic
- ✓ Bleach Cleanable
- ✓ Easy Install
- ✓ Easy Clean

Description	<p>Individually crafted by our designers, the Zintra collection of Premium Material prints faithfully recreates the striking aesthetics of architectural finishes with awe-inspiring realism and superior acoustics.</p> <p>Concrete, renowned for its versatility in texture and finish, spans from sleek and polished to rugged and industrial, making it a quintessential choice in modern design. Its ability to adapt to diverse shapes and surfaces adds to its allure, creating a harmonious fusion of form and function.</p> <p>Within our Zintra collection, Concrete finds its place among Premium Material prints, showcasing architectural finishes' striking aesthetics while delivering exceptional acoustics. The ½" (12mm) Zintra base color is meticulously paired to introduce depth, infusing unparalleled crispness and clarity.</p> <p>Lightweight, versatile, and extraordinarily durable, Premium Material unveils a world of possibilities for your projects. Craft sustainable spaces that not only resonate with exceptional acoustics but also radiate the utmost beauty. Discover the timeless elegance of Concrete within our contemporary context, where function and beauty coalesce seamlessly.</p> <p>Concrete is available in Concrete Cast, Concrete Polished and Concrete Dark Tint.</p>
-------------	--

How to Specify	<p>1. Select Pattern</p> <p>Base color is preselect to best match print.</p>
----------------	--

Composition	<p>12mm</p> <p>Density: 2.4 kg /m²</p>
-------------	--

Sustainability	<p>Zintra is made from 100% recyclable materials.</p> <ul style="list-style-type: none">• 60% post-consumer recycled content from PET bottles.• 35% pre-consumer recycled content from PET chips• 5% polylactic acid (PLA)
----------------	--

CONCRETE PREMIUM MATERIAL

Digital Print » Premium Materials

PET Colours	<ol style="list-style-type: none">1. Select Print2. Select single or double sided print3. The base color is predetermined by the print choice to best align. <p>Concrete Cast:</p> <p>The base color for this design is on 'Pebble' ONLY</p> <p>Concrete Polished:</p> <p>The base color for this design is on 'Fossil' ONLY</p> <p>Concrete Dark Tint:</p> <p>The base color for this design is on 'Slate' ONLY</p>
Material	Zintra Acoustic Panel - 100% Solution Dyed (Color Through) Polyester
Dimensions	1225mm x 2800mm
Fire Rating	<p>Tested in accordance with AS ISO 9705 2003 for the purpose of determining the Group Number classification required by the Building Code of Australia for the control of fire spread on interior wall and ceiling linings.</p> <p>Classification - Group 1</p> <p>Specific Extinction - Less than 250m²/kg</p>
Made In	Australia
Lead Time	<ul style="list-style-type: none">• 2-3 weeks.• Additonal 1-week for Western Australia.
Supplied As	<p>1 x Zintra Premium Material Print Panel supplied in chosen design.</p> <p>Concrete Cast, Concrete Polished or Concrete Dark Tint</p>
Inclusions	1 x Zintra Premium Material Print Panel supplied in chosen design. Concrete Cast, Concrete Polished or Concrete Dark Tint.
Assembly & Delivery	<p>Ships Flat Pack</p> <p>Refer Installation Instructions</p>

CONCRETE PREMIUM MATERIAL

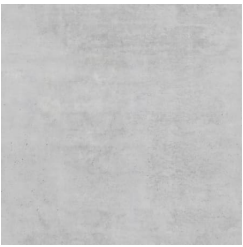
Digital Print » Premium Materials

Suggested Installation	Ceiling or Wall Refer Installation Guide
Care Instructions	<p>Vacuum to remove dust.</p> <p>Dab Zintra with a damp clean cloth and mild solution of liquid detergent and warm water. Repeat using only clean water, then pat dry with a lint free cloth.</p> <p>For difficult stains, use a solution of household bleach (10% bleach / 90% water). To remove the bleach, repeat using a clean, water dampened cloth, then pat dry.</p> <p>Always test in an inconspicuous area first and if you don't see the expected results, contact us.</p>
Warranty	5-year warranty. Visit baresque.com.au/warranty for complete details.
Additional Comments	NRC 0.45 - 0.95

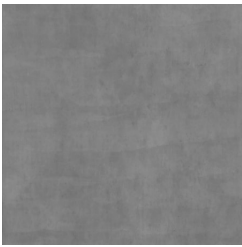
CONCRETE PREMIUM MATERIAL

Digital Print » Premium Materials

Colour & Finish Options



CONCRETE CAST



CONCRETE POLISHED



CONCRETE DARK
TINT