

# PARLOUR

**Fabrics** » Woven Fabrics

---



Brand: **Burch**

Applications: **Upholstery**

1300 306 399

[info@baresque.com.au](mailto:info@baresque.com.au)

[baresque.com.au](http://baresque.com.au)

1 of 5

# PARLOUR

**Fabrics** » Woven Fabrics

---



1300 306 399

[info@baresque.com.au](mailto:info@baresque.com.au)

[baresque.com.au](http://baresque.com.au)

2 of 5

# PARLOUR

Fabrics » Woven Fabrics

Chic classics reimagined Parlour's plaid get a modern twist in soft neutrals for timeless elegance and Crypton protection add enduring elegance.

- ✓ **Crypton**
- ✓ **Greenguard Gold Certified**
- ✓ **Water Resistant**
- ✓ **Stain Resistant**
- ✓ **Bleach Cleanable**

**Description** Parlour is a chic interpretation of a plaid with clean, classic lines. This pattern is offered in a palette of ten handsome shades with a casual menswear influence.

**Composition** CRYPTON - 95% Polyester | 5% Post consumer recycled polyester.

**Environmental Info** Greenguard Certifications contributes towards LEED credits for low-emitting furniture and ensures compliance with Business and Institutional Furniture Manufacturers Association (BIFMA) X7.1 standard and BIFMA e3 credit 7.6.1.

Greenguard Gold Certification standard includes:

- \* Health-based criteria for additional chemicals and requires lower total VOC emissions levels to help ensure that products are acceptable for use in environments like schools and healthcare facilities.
- \* Products that also comply with requirements of the state of California's Department of Public Health (CDPH) "Standard Method for the Test and Evaluation of Volatile Organic Chemical Emissions from Indoor Sources Using Environmental Chambers, Version 1.2 (2017)" (also known as California Section 01350).
- \* Products that are compliant with the BIFMA X7.1 standard and BIFMA e3 credits 7.6.1, 7.6.2, and 7.6.3.

**Pattern Repeat Size** 4.5cm V/ 5cm H

**Roll Size** 137cm wide X 55m - Available by the lineal metre

**Weight** 705 g/m<sup>2</sup>

**Abrasion** 63,000 double rubs (Wyzenbeek)

**Fire Rating** This product can be treated with a fire retardant that will ensure it meets Australian Standard 1530.3. Contact Baresque for details.

## Lead Time

- 2-weeks (approx.) from Wednesday, subject to stock availability.
  - Additional 1-week for Western Australia.
  - Express delivery is available subject to a surcharge. Contact Baresque for details and pricing.
- 

## Care Instructions

Always use a clean, white, soft cloth.

Prepare a mixture of 1/3 Napisan and 2/3 Fab. Combine the mixture with water to make a paste about the consistency of soft margarine i.e. not too runny. Apply using a soft bristle brush. Leave for 10 minutes.

Use a brush and clean, warm water to remove the paste being sure to renew the water so that it remains clean.

Never use stiff bristles or wire brushes, as they may damage the fabric. To prevent soil build-up, frequent vacuuming is recommended.

Using a cloth to pat dry will help eliminate watermarks.

For more difficult stains, dampen a soft white cloth with a solution of household bleach (10% bleach / 90% water). Rub gently. Rinse with a water dampened cloth to remove bleach concentration.

Always test in an inconspicuous area first. If care instructions don't deliver the expected results, cease cleaning method immediately and contact Baresque for assistance.

---

## Warranty

2-year warranty. Visit [baresque.com.au/warranty](https://baresque.com.au/warranty) for complete details.

---

## Colour & Finish Options



COLOURWAY CARD



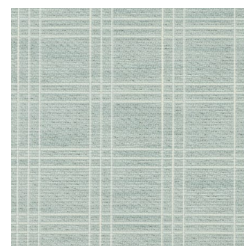
1012148  
BUTTERSCOTCH



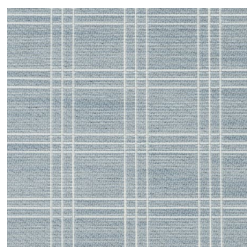
1012149 RUBY



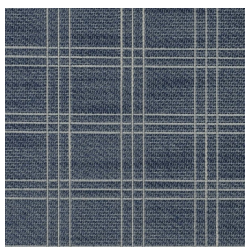
1012150 KIWI



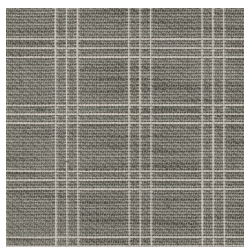
1012151 SEABREEZE



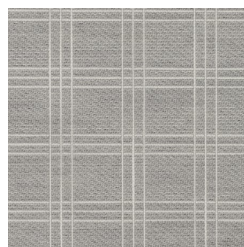
1012152 CORNFLOWER



1012153 NAUTICAL



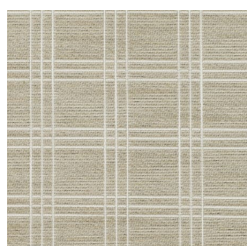
1012154 STRATUS



1012155 DOVE



1012156 BISCOTTI



1012157 SAHARA