

ANTIQUE BURCH

Fabrics » Woven Fabrics



Brand: **Burch**

Applications: **Upholstery**

1300 306 399

info@baresque.com.au

baresque.com.au

1 of 4

ANTIQUE BURCH

Fabrics » Woven Fabrics

Classic meets modern! Antique breathes new life into vintage herringbone textures in fresh palettes. Perfect for modern spaces.

- ✓ **Crypton**
- ✓ **Greenguard Gold Certified**
- ✓ **Water Resistant**
- ✓ **Stain Resistant**
- ✓ **Bleach Cleanable**

Description	Loopy boucle yarns amplify Antique's homespun herringbone pattern. Antique offers twelve cozy and classic shades.
Composition	CRYPTON - 52% Post consumer recycled polyester 48% Polyester
Environmental Info	<p>Greenguard Certifications contributes towards LEED credits for low-emitting furniture and ensures compliance with Business and Institutional Furniture Manufacturers Association (BIFMA) X7.1 standard and BIFMA e3 credit 7.6.1.</p> <p>Greenguard Gold Certification standard includes:</p> <p>* Health-based criteria for additional chemicals and requires lower total VOC emissions levels to help ensure that products are acceptable for use in environments like schools and healthcare facilities.</p> <p>* Products that also comply with requirements of the state of California's Department of Public Health (CDPH) "Standard Method for the Test and Evaluation of Volatile Organic Chemical Emissions from Indoor Sources Using Environmental Chambers, Version 1.2 (2017)" (also know as California Section 01350).</p> <p>* Products that are compliant with the BIFMA X7.1 standard and BIFMA e3 credits 7.6.1, 7.6.2, and 7.6.3.</p>
Pattern Repeat Size	Not Applicable
Roll Size	137cm x 50m - Available by the lineal metre.
Weight	678 g/m ²
Abrasion	50,000 double rubs (Wyzenbeek)
Fire Rating	This product can be treated with a fire retardant that will ensure it meets Australian Standard 1530.3. Contact Baresque for details.

ANTIQUE BURCH

Fabrics » Woven Fabrics

Lead Time

- 2-weeks (approx.) from Wednesday, subject to stock availability.
 - Additional 1-week for Western Australia.
 - Express delivery is available subject to a surcharge. Contact Baresque for details and pricing.
-

Care Instructions

Always use a clean, white, soft cloth.

Prepare a mixture of 1/3 Napisan and 2/3 Fab. Combine the mixture with water to make a paste about the consistency of soft margarine i.e. not too runny. Apply using a soft bristle brush. Leave for 10 minutes.

Use a brush and clean, warm water to remove the paste being sure to renew the water so that it remains clean.

Never use stiff bristles or wire brushes, as they may damage the fabric. To prevent soil build-up, frequent vacuuming is recommended.

Using a cloth to pat dry will help eliminate watermarks.

For more difficult stains, dampen a soft white cloth with a solution of household bleach (10% bleach / 90% water). Rub gently. Rinse with a water dampened cloth to remove bleach concentration.

Always test in an inconspicuous area first. If care instructions don't deliver the expected results, cease cleaning method immediately and contact Baresque for assistance.

Warranty

2-year warranty. Visit baresque.com.au/warranty for complete details.

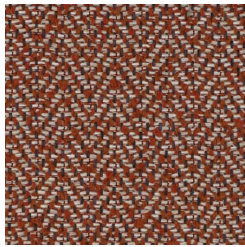
ANTIQUE BURCH

Fabrics » Woven Fabrics

Colour & Finish Options



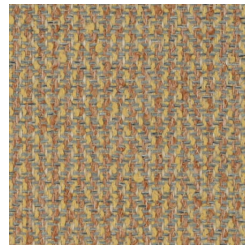
COLOURWAY CARD



1011763 SANGRIA



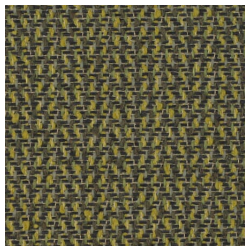
1011764 MESA



1011765 BELLINI



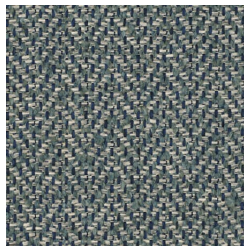
1011766 ARTICHOKE



1011767 BALSAM



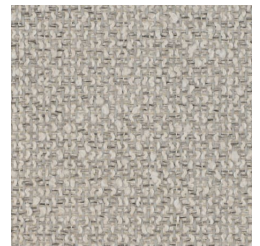
1011768 PALMETTO



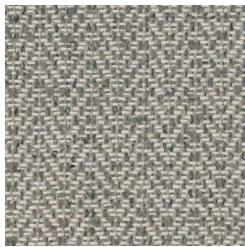
1011769 CASPIAN



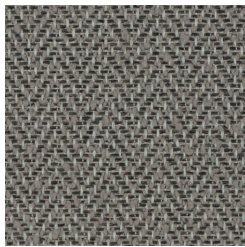
1011770 GLACIER



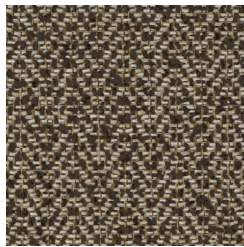
1011771 LONDON FOG



1011772 SEAGULL



1011773 MARBLE



1011774 TORTOISE