

# PEDIGREE

Fabrics » Woven Fabrics



Brand: **Burch**

Applications: **Upholstery**

1300 306 399

[info@baresque.com.au](mailto:info@baresque.com.au)

[baresque.com.au](http://baresque.com.au)

1 of 4

# PEDIGREE

Fabrics » Woven Fabrics

Made of 100% recycled olefin, Pedigree's inspiration comes from natural wool with a warmth combination of 16 colourways.

✓ **Crypton**

✓ **Greenguard Gold Certified**

✓ **Water Resistant**

✓ **Stain Resistant**

Description	Designed to mimic natural wool, Pedigree radiates warmth and sophistication. Heathered colour combinations provide richness and depth to a palette of sixteen.
-------------	--

Composition	CRYPTON - 100% Recycled olefin
-------------	--------------------------------

Environmental Info	<p>Greenguard Certifications contributes towards LEED credits for low-emitting furniture and ensures compliance with Business and Institutional Furniture Manufacturers Association (BIFMA) X7.1 standard and BIFMA e3 credit 7.6.1.</p> <p>Greenguard Gold Certification standard includes:</p> <p>* Health-based criteria for additional chemicals and requires lower total VOC emissions levels to help ensure that products are acceptable for use in environments like schools and healthcare facilities.</p> <p>* Products that also comply with requirements of the state of California's Department of Public Health (CDPH) "Standard Method for the Test and Evaluation of Volatile Organic Chemical Emissions from Indoor Sources Using Environmental Chambers, Version 1.2 (2017)" (also know as California Section 01350).</p> <p>* Products that are compliant with the BIFMA X7.1 standard and BIFMA e3 credits 7.6.1, 7.6.2, and 7.6.3.</p>
--------------------	--

Pattern Repeat Size	Not Applicable
---------------------	----------------

Roll Size	137cm x 50m - Available by the lineal metre.
-----------	--

Weight	502 g/m <sup>2</sup>
--------	----------------------

Abrasion	50,000 double rubs (Wyzenbeek)
----------	--------------------------------

Fire Rating	This product can be treated with a fire retardant that will ensure it meets Australian Standard 1530.3. Contact Baresque for details.
-------------	---

# PEDIGREE

Fabrics » Woven Fabrics

---

## Lead Time

- 2-weeks (approx.) from Wednesday, subject to stock availability.
  - Additional 1-week for Western Australia.
  - Express delivery is available subject to a surcharge. Contact Baresque for details and pricing.
- 

## Care Instructions

Mix 5 parts water with 1 part of an enzyme laundry detergent to have a mixture that works well on all stains.

Most liquid spills simply blot off the surface with a dry towel. If a stain remains, follow these simple steps:

1. Remove excess soil, and apply the soap mixture on the stained area
2. Allow solution to remain on stain for 1 minute
3. Blot up the stain with a dry, clean towel, rinse any remaining soap and blot the area again

Repeat these steps if a spot still remains. If agitation is necessary, spray the stained area and work the stain using a soft brush or edge of spoon from outside of spot toward the middle. Blot and rinse to remove any soap.

---

## Warranty

2-year warranty. Visit [baresque.com.au/warranty](https://baresque.com.au/warranty) for complete details.

---



## Colour & Finish Options



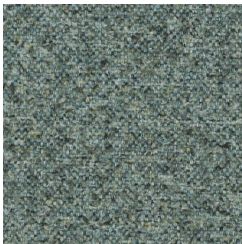
COLOURWAY CARD



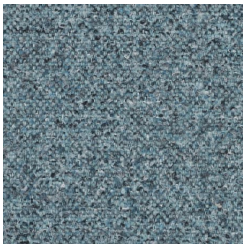
1011731  
HEATHERGLEN



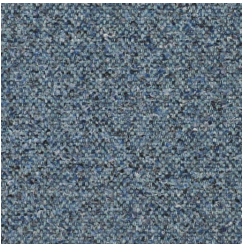
1011732 LAUREL



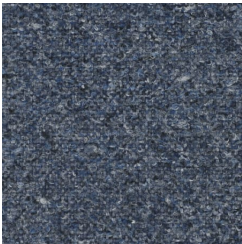
1011733 TROPIC



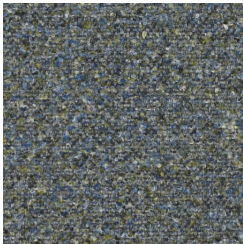
1011734 CAPRI



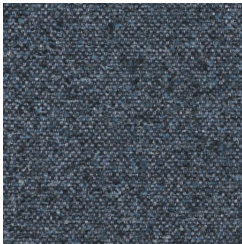
1011735 TIDAL



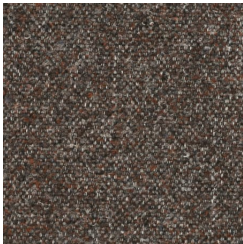
1011736 LIBERTY



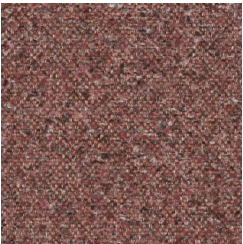
1011737 BLUEGREEN



1011738 DEEP TEAL



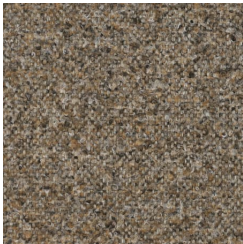
1011739 RAISIN



1011740 HIBISCUS



1011741 EMBER



1011742 CINDER



1011743 ECLIPSE



1011744 SILVERADO



1011745 SANDHURST



1011746 OATMEAL