

HIGHLAND PANAZ

Fabrics » Woven Fabrics



Brand: **Panaz**

HIGHLAND PANAZ

Fabrics » Woven Fabrics

COLOURWAY CARD

COLOURWAY CARD



105 INDIGO



107 CORNFLOWER



110 PACIFIC



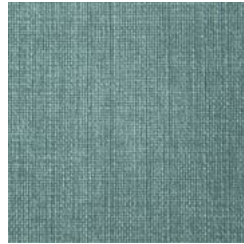
116 NAVY



117 ROYAL



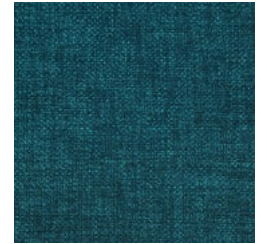
129 OCEAN



131 AZURE



134 SKY



151 TEAL



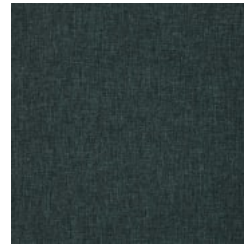
192 INK



196 HERITAGE BLUE



203 EMERALD



207 EVERGREEN



208 FERN GREEN



211 SPRUCE



221 DUSTY SAGE



229 FOREST



231 OLIVE



271 CELADON



300 GOLD



314 MUSTARD



321 WHEAT



400 RED



405 CRIMSON

HIGHLAND PANAZ

Fabrics » Woven Fabrics



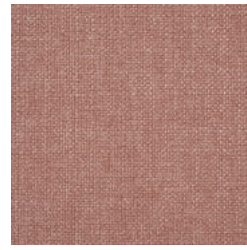
408 TERRACOTTA



436 PAPRIKA



481 DAMSON



618 BLUSH



619 ROSEWOOD



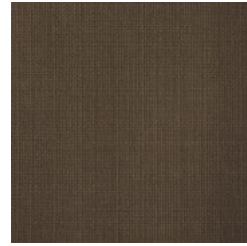
646 PEONY



648 FIG



692 HEATHER



703 MINK



807 MUSHROOM



823 CHABLIS



835 HESSIAN



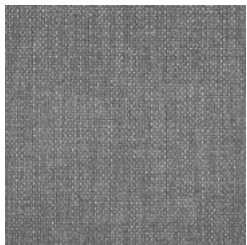
841 BISCOTTI



858 COBBLE



877 OYSTER



901 SILVER



903 CHARCOAL



905 DOVE



906 ASH



911 STEEL



954 GRAPHITE



HIGHLAND PANAZ

Fabrics » Woven Fabrics

Earthy hues and wool-like texture: Highland evokes nature's serenity with calming greens, blues, and warm tones.

- ✓ **Anti-Microbial**
- ✓ **Breathable**
- ✓ **Stain Resistant**
- ✓ **PFAS Free**
- ✓ **Waterproof**

Description Highland's simple texture reminds us of the aesthetic of wool, it lends itself to natural colours derived from the earth, the new colours are inspired by woodland greens to sea blues and warm tones from the Earth.

Roll Size Approx. 136cm x N/A - Available by the lineal metre.

Weight 320 g/m²

Composition 100% Polyester with Microporous Film & FR backcoating.

Abrasion 100,000 rubs (Wyzenbeek)

Pattern Repeat Size Not Applicable

Fire Rating Tested in accordance with AS1530.3
Spread of Flame Index - 0
Smoke Developed Index - 5

Warranty 2-year warranty. Visit [baresque.com.au/warranty](https://www.baresque.com.au/warranty) for complete details.

Lead Time

- 2-weeks (approx.) from Wednesday, subject to stock availability.
- Additional 1-week for Western Australia.
- Express delivery is available subject to a surcharge. Contact Baresque for details and pricing.

HIGHLAND PANAZ

Fabrics » Woven Fabrics

Care Instructions

- * Vacuum and wipe clean routinely with a microfibre cloth lightly dampened with cold water only.
 - * Soak up spillages as soon as possible with an absorbent dry cloth to prevent staining.
 - * If soiling has accumulated use a mild proprietary cleaner (non-alkaline). Take care to remove all soap residues and dry with a clean absorbent cloth. Then brush pile back to its natural direction.
 - * Do not steam clean - heat seals its stains
 - * Do not use bleach
 - * Do not tumble dry
 - * Do not dry clean
 - * Do not fully immerse in water
 - * Do not apply solvents, alcohol, or any other chemical cleaners
-

HIGHLAND PANAZ

Fabrics » Woven Fabrics

Colour & Finish Options