

ARCADE

Fabrics » Woven Fabrics



Brand: **Concertex**

Applications: **Upholstery**

1300 306 399

info@baresque.com.au

baresque.com.au

1 of 4

ARCADE

Fabrics » Woven Fabrics

Relive playful memories with Arcade! This fun woven fabric is made of 81% recycled polyester, it's bleach cleanable and exceeds 200.000 rubs.

- ✓ Bleach Cleanable
- ✓ Stain Repellent
- ✓ PFAS Free
- ✓ Water Repellent

Description	Your favourite pastimes are making a comeback. An ode to classic childhood games, Arcade is a playful and abstract pattern created by multi-color stripes running on the back of the fabric and showing up sporadically on the front. From Bubble Gum to Pinball, Spaceship, and Asteroid, the Arcade multi-color combinations are a joyful exploration designed to bring out the kid in all of us. Better yet, it is made with 81% recycled polyester, is bleach-cleanable, and passes 200,000+ double rubs. Go on, get playing.
Composition	81% recycled Polyester, 19% Polyester Backing: 100% Acrylic
Environmental Info	PVC/Phthalates free No added fire retardant Healthier Hospitals compliant
Pattern Repeat Size	38.4cm V / 37 cm H
Roll Size	137cm wide x 27.4m - Available by the lineal metre
Abrasion	200,000+ Double Rubs (Wyzenbeek)
Lead Time	<ul style="list-style-type: none">• 2-weeks (approx.) from Wednesday, subject to stock availability.• Additional 1-week for Western Australia.• Express delivery is available subject to a surcharge. Contact Baresque for details and pricing.

Care Instructions

Basic Maintenance such as removal of dust and stains will keep your upholstery looking good and performing well for years. Any stains

should be addressed promptly since, the longer the stain remains, the more difficult it will be to remove and untreated stains may

become permanent.

If the stain is wet, gently blot away any extra fluid that might remain on the fabric.

If a stain still remains and additional cleaning is required, a cleaner can be applied lightly to a soft cloth and gently worked into the stained area.

Use clean water to rinse away any remaining cleaning solution.

If the stain is dry, a soft bristle brush can be used to gently remove any remaining accumulated matter. Any loose material can then be vacuumed away and, if a stain remains, cleaning can then be performed as described above.

If a stain cannot be removed by these methods, a solution of 10 parts water to 1 part bleach can be used.

Never use full strength bleach.

Warranty

2-year warranty. Visit baresque.com.au/warranty for complete details.

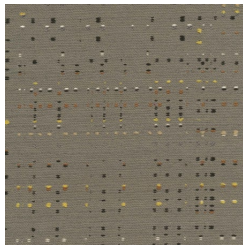
ARCADE

Fabrics » Woven Fabrics

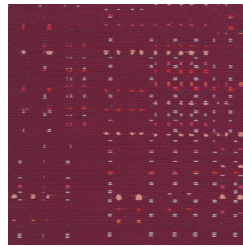
Colour & Finish Options

COLOURWAY CARD

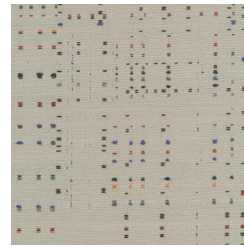
COLOURWAY CARD



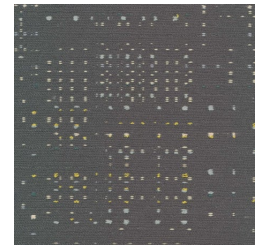
ASTEROID



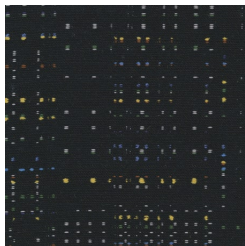
BUBBLE-GUM



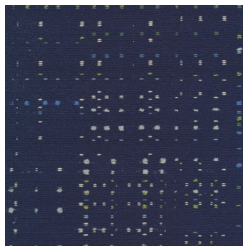
PINBALL



ROBOT



SPACESHIP



SPLASH